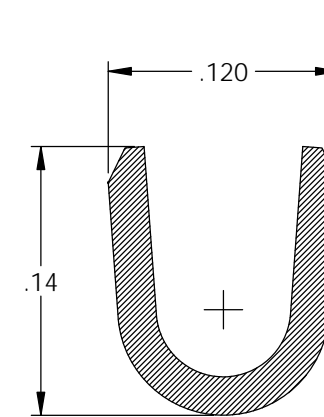
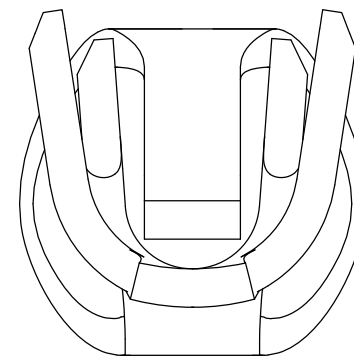
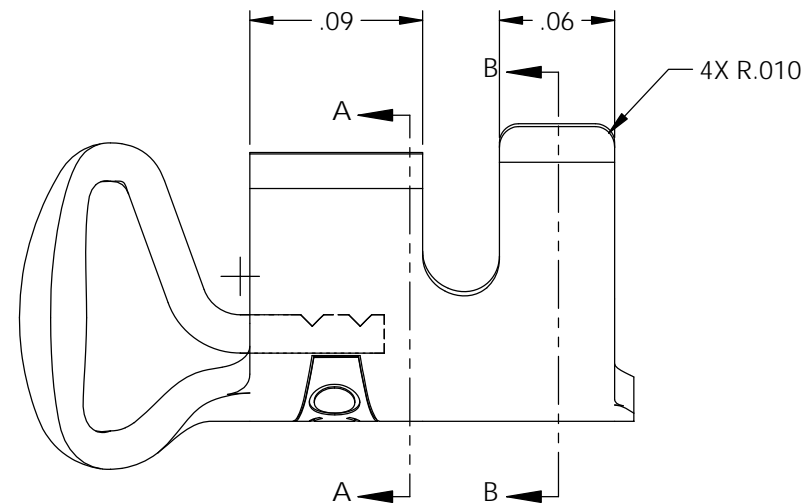
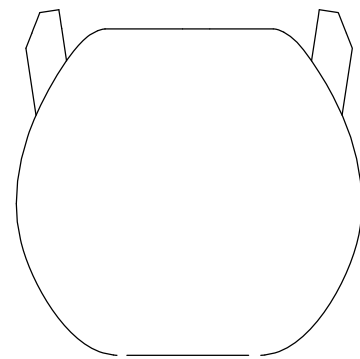
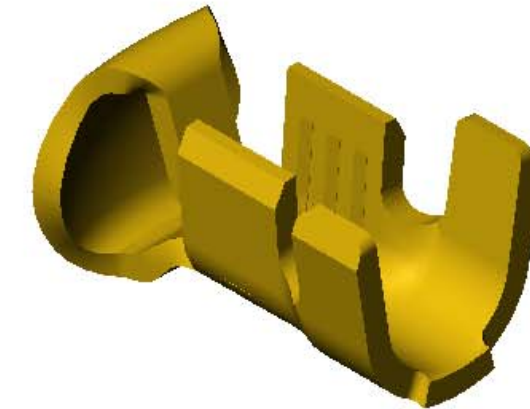
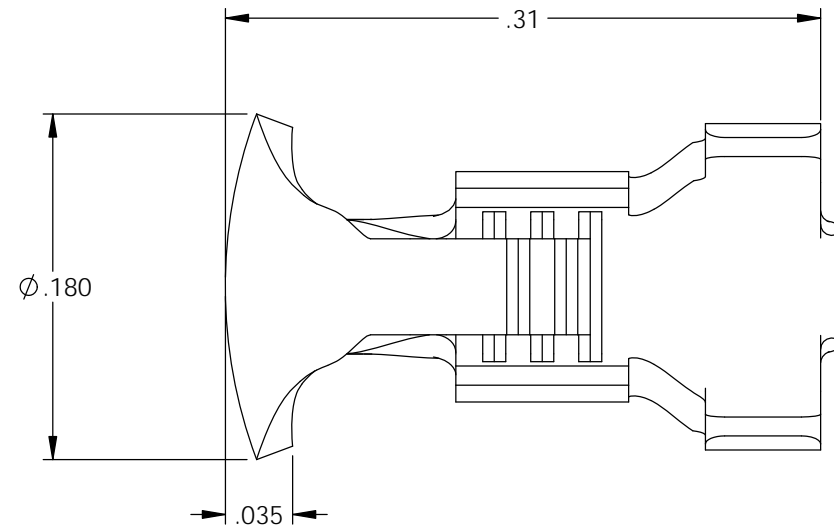


NOTES:

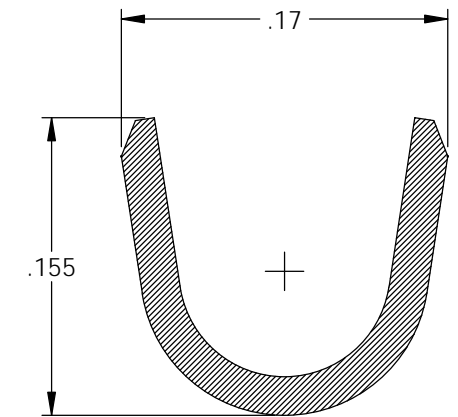
- MATERIAL: .020 THICK BRASS
#2 TEMPER (1/2 HARD)
PER ETCO METAL CODE 1-0390.
- MATERIAL: .020 THICK PRETINNED BRASS
#2 TEMPER (1/2 HARD)
PER ETCO METAL CODE 1-1450.
- PARTS MAY BE COATED WITH A LIGHT FILM OF LUBRICATION USED IN THE MANUFACTURING PROCESS.
- WIRE RANGE: 22-18 AWG.
- INSULA DIAMETER: ϕ .060- ϕ .110.

P/C	DESCRIPTION	MAT'L	REWIND
09631	LS10-THB	NOTE 2	NO
09735	LS10-HB	NOTE 1	NO
09723	LS10R-HB	NOTE 1	YES
09851	LS10-THB REVERSE WD	NOTE 2	YES

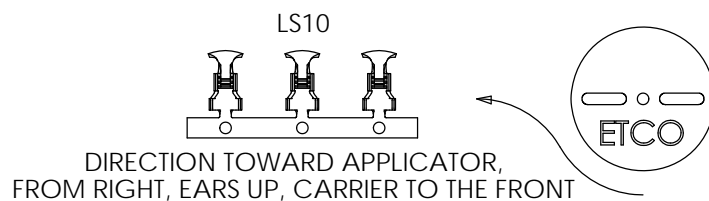
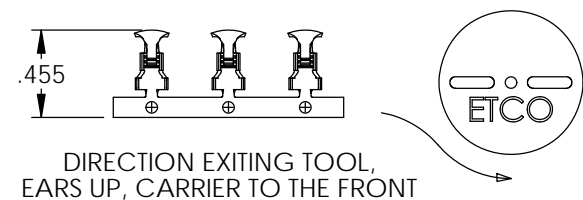
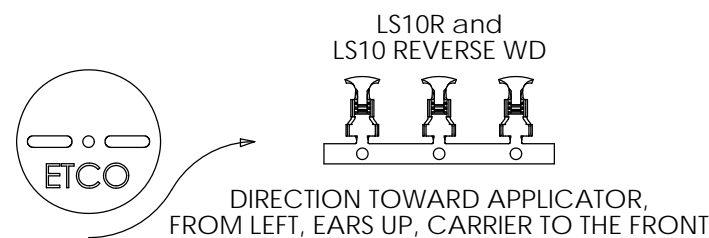
Rev.	Description of Change/ SCN#	Date
3	Redrawn in SW from ACAD ACAD Eng Dwg Date: 12/04/91	11/14/19



SECTION A-A



SECTION B-B



UNCONTROLLED COPY

<p>THIRD ANGLE PROJECTION TOLERANCES UNLESS OTHERWISE SPECIFIED INCHES: .XX - \pm.030 .XXX - \pm.015 ANGLES: \pm5°</p>	TOOL NO. 0219	Title: Button Contact	
		DO NOT SCALE DWG.	Drawn By: S.Johnson
ETCO Incorporated Engineered Products 25 Bellows Street Warwick, RI 02888 Phone: (401) 467-2400 Fax: (401) 467-9230 www.ETCO.com		Design Control By: ETCO	Date: 11/14/19
Dwg. No.:		Scale: 10X	Size: B
LS10			