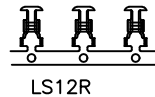
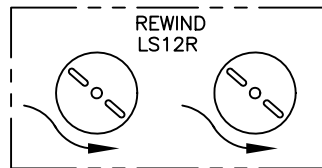
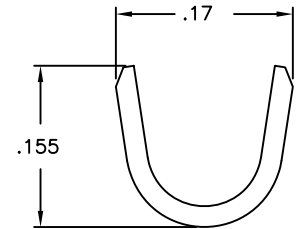
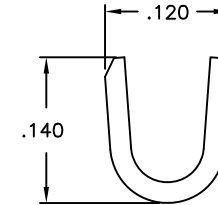
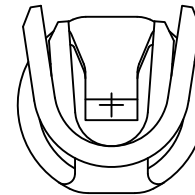
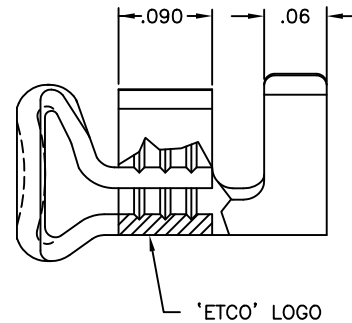
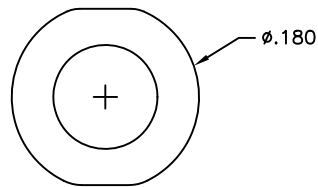
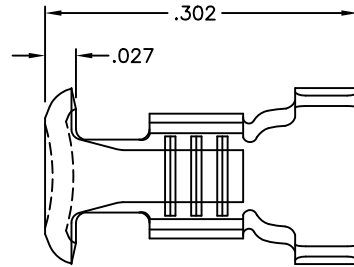


NOTE:

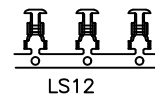
- 1.) MAT'L: .020 THK, BRASS, #2 TEMPER (HALF HARD), PER ETCO METAL CODE NO. 00390.
- 2.) PARTS MAY BE COATED WITH A LIGHT FILM OF LUBRICATION USED IN THE MANUFACTURING PROCESS.
- 3.) WIRE RANGE: 22-18 AWG
- 4.) INSUL RANGE:  $\phi$ .060- $\phi$ .110

Rev.	Description of Change/ SCN#	Date
1	SCN# 140263 SCJ	11-6-07

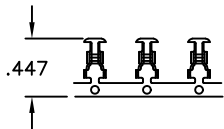
P/C	DESCRIPTION	REWIND
09737	LS12-HB	NO
09646	LS12R-HB	YES



DIRECTION TOWARD APPLICATOR (FROM LEFT), EARS UP, CARRIER TO THE FRONT, AFTER REWIND



DIRECTION TOWARD APPLICATOR (FROM RIGHT), EARS UP, CARRIER TO THE FRONT



DIRECTION EXITING TOOL, EARS UP, CARRIER TO THE FRONT

# UNCONTROLLED COPY

THIRD ANGLE PROJECTION		TOOL NO. 0219		Title: BUTTON CONTACT	
TOLERANCES UNLESS OTHERWISE SPECIFIED .XX - $\pm$ .030 .XXX - $\pm$ .015 Angles - $\pm$ 5°		DO NOT SCALE DWG.		Drawn By: P. McCormick	Date: 11-27-96
ETCO		ETCO Incorporated Engineered Products 25 Bellows Street Warwick, R.I. 02888 Phone: (401)467-2400 FAX: (401)467-9230		Checked: Scale: 8:1	Size: B
		Dwg. No.: C-		LS12 LS12R	

THIS PRINT IS THE PROPERTY OF ETCO INCORPORATED. NO PART OF THIS DESIGN MAY BE USED IN ANY WAY WITHOUT WRITTEN CONSENT FROM ETCO INCORPORATED.

CUSTOMER DRAWING