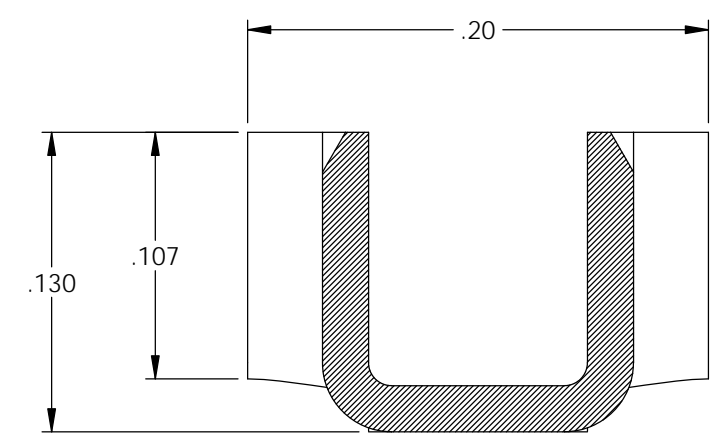
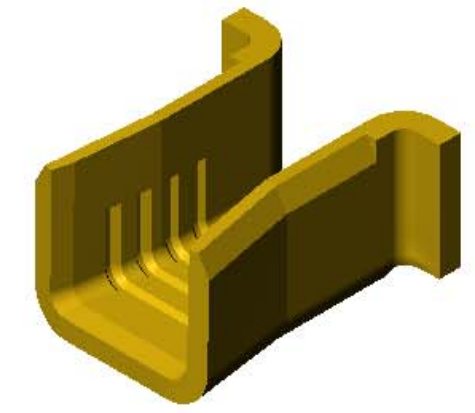
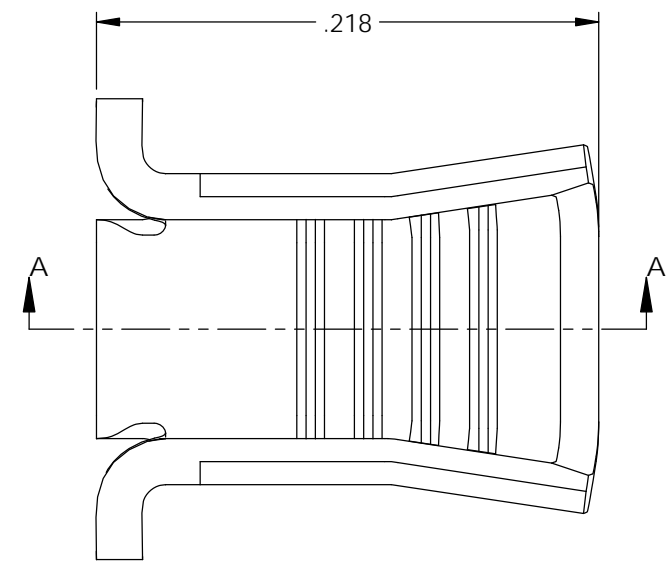
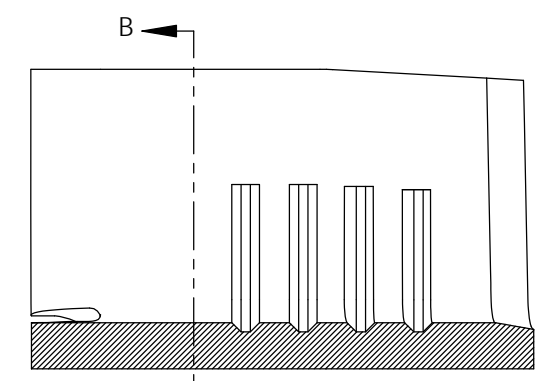


Rev.	Description of Change/ SCN#	Date
1	Redrawn in SW from ACAD SCJ	11/25/19

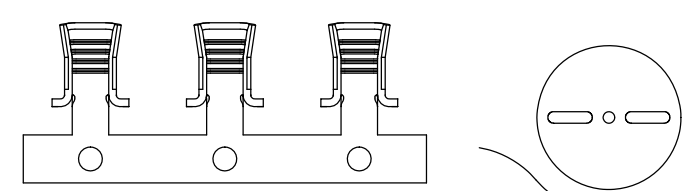
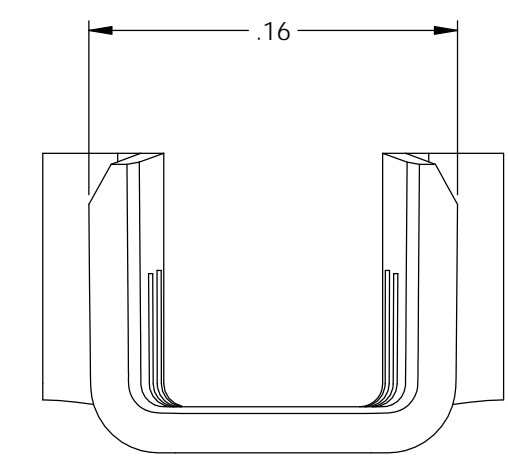
- NOTES:
- MATERIAL: .020 THICK BRASS
1/2 HARD ANNEALED TEMPER
PER ETCO METAL CODE 1-0250.
 - PARTS MAY BE COATED WITH A LIGHT FILM OF LUBRICATION USED IN THE MANUFACTURING PROCESS.
 - WIRE RANGE: 20-16 AWG.



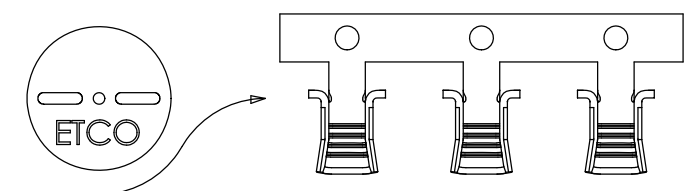
SECTION B-B
SCALE 12 : 1



SECTION A-A
SCALE 12 : 1



SCALE: 2X
DIRECTION EXITING TOOL,
EARS UP, CARRIER TO THE FRONT



SCALE: 2X
DIRECTION TOWARD APPLICATOR,
EARS UP, CARRIER TO THE BACK

THIS PRINT IS THE PROPERTY OF ETCO INCORPORATED. NO PART OF THIS DESIGN MAY BE USED IN ANY WAY WITHOUT WRITTEN CONSENT FROM ETCO INCORPORATED.

UNCONTROLLED COPY

<p>THIRD ANGLE PROJECTION TOLERANCES UNLESS OTHERWISE SPECIFIED INCHES: .XX - ±.030 .XXX - ±.015 ANGLES: ±5°</p>	<p>TOOL NO. 0655</p>	<p>Title:</p>		<p>Contact</p>	
		<p>DO NOT SCALE DWG.</p>	<p>Drawn By: S.Johnson</p>	<p>Date: 11/25/19</p>	
<p>ETCO Incorporated Engineered Products 25 Bellows Street Warwick, RI 02888 Phone: (401) 467-2400 Fax: (401) 467-9230 www.ETCO.com</p>		<p>Design Controlled By: ETCO</p>	<p>Scale: 12X</p>	<p>Size B</p>	
		<p>Dwg. No.: LS2 cust</p>			