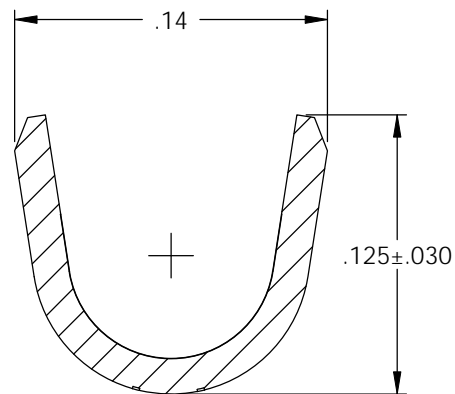
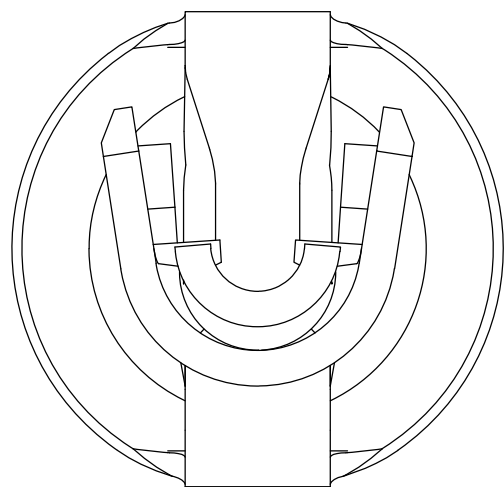
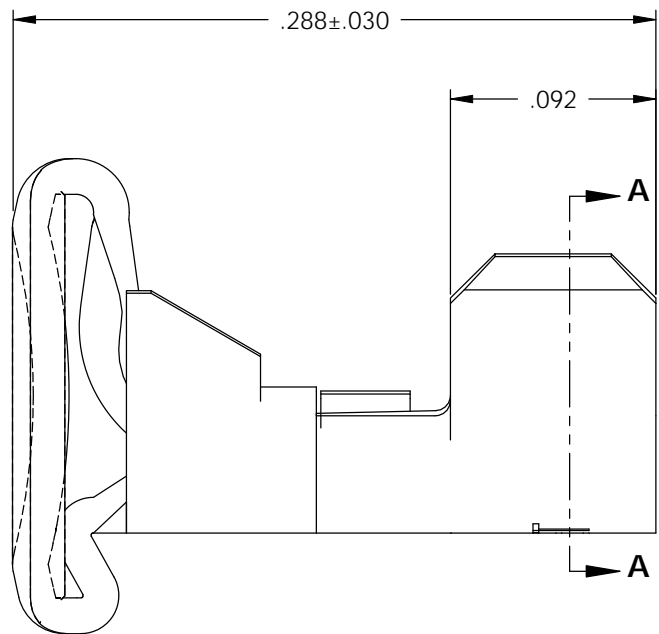
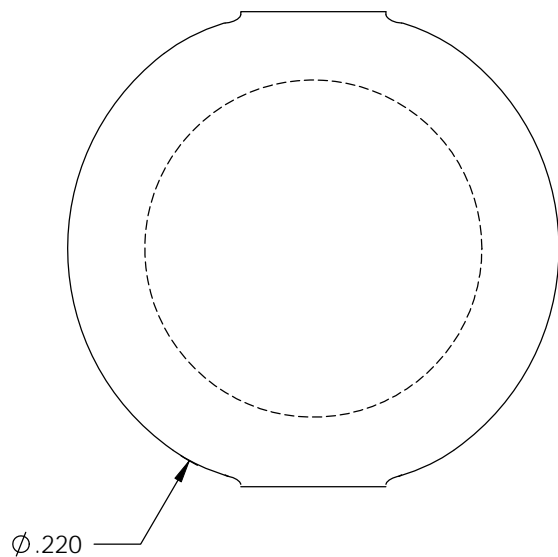
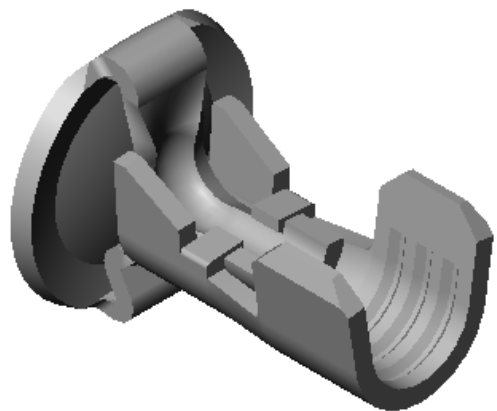
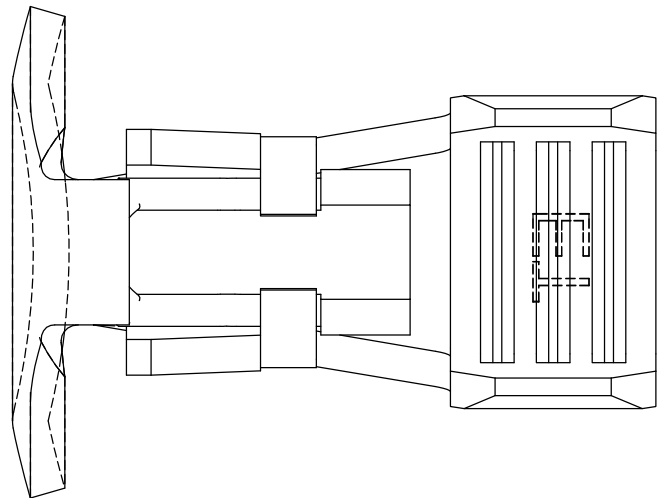


NOTE:

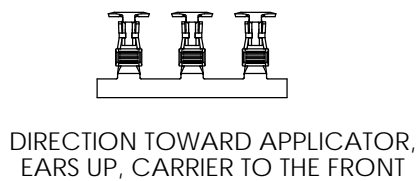
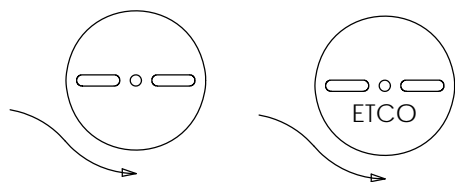
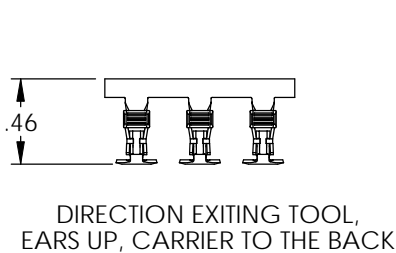
- 1.) MAT'L: .016 THK., BRASS, #2 TEMPER (HALF HARD), PER ETCO METAL CODE NO. 00177.
- 2.) MAT'L: .016 THK., PRE-TINNED BRASS, #2 TEMPER (HALF HARD), PER ETCO METAL CODE NO. 01240.
- 3.) PARTS MAY BE COATED WITH A LIGHT FILM OF LUBRICATION USED IN THE MANUFACTURING PROCESS.
- 4.) WIRE RANGE: 20-16 AWG.

P/C	DESCRIPTION	MAT'L
09827	LS3-150-HB	NOTE 1

Rev.	Description of Change/ SCN#	Date
1	REDRAWN ON SOLIDWORKS NO CHANGES SCJ ORG.ENG.DWG.DATE: 11-12-98	10-14-05



SECTION A-A



**UNCONTROLLED COPY**

<p>THIRD ANGLE PROJECTION TOLERANCES UNLESS OTHERWISE SPECIFIED INCHES: .XX - ±.030 .XXX - ±.015 ANGLES: ±5°</p>	<p>TOOL NO. <b>0209</b></p>	<p>Title: <b>BUTTON CONTACT</b></p>		
		<p>DO NOT SCALE DWG.</p>	<p>Drawn By: S.JOHNSON</p>	<p>Date: 10-14-05</p>
<p>ETCO Incorporated Engineered Products 25 Bellows Street Warwick, RI 02888 Phone: (401) 467-2400 Fax: (401) 467-9230 www.ETCO.com</p>		<p>Chk'd/App'd By:</p>	<p>Scale: 12X</p>	<p>Size <b>B</b></p>
		<p>Dwg. No.: <b>LS3-150 cust</b></p>		