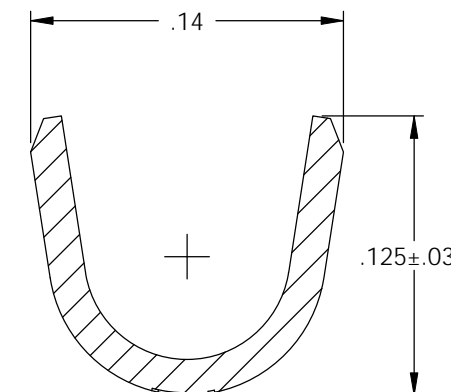
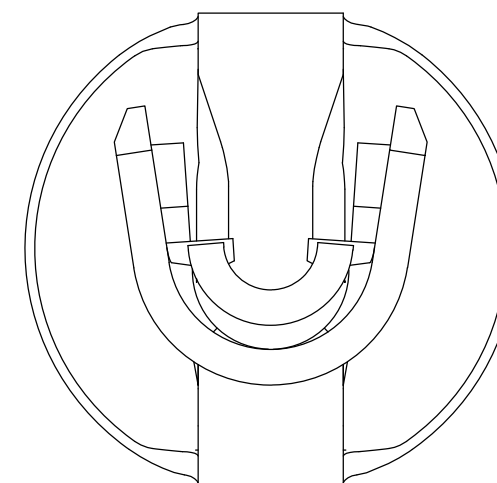
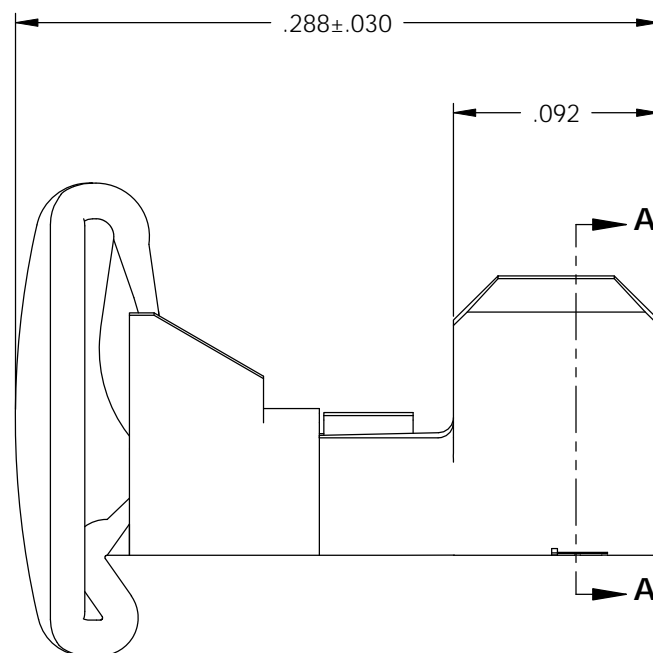
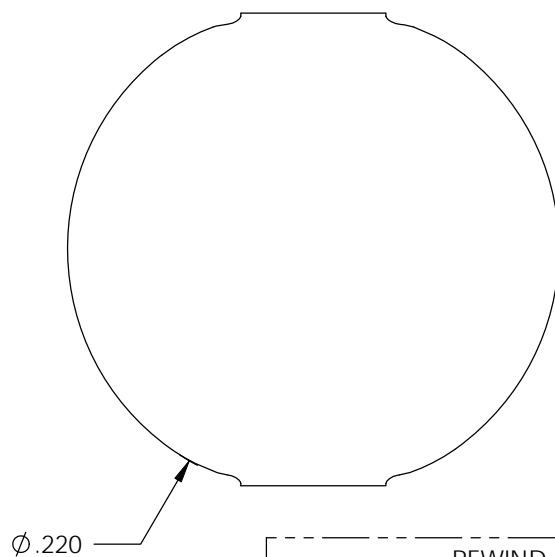
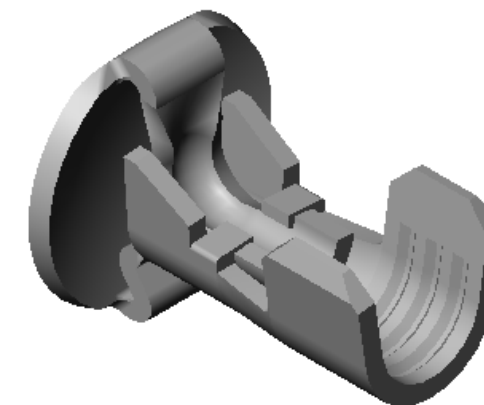
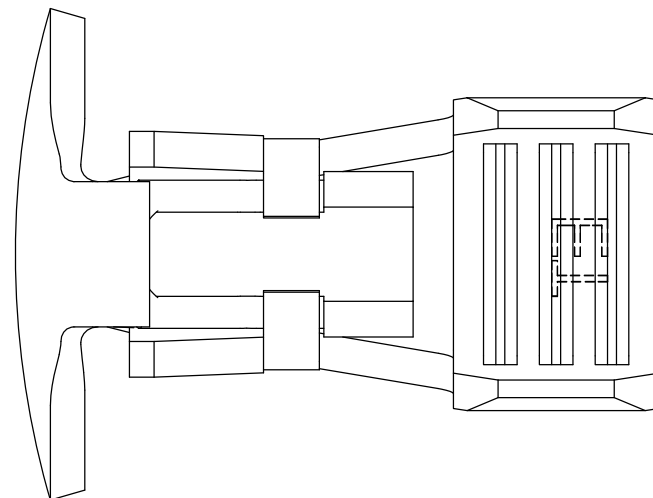


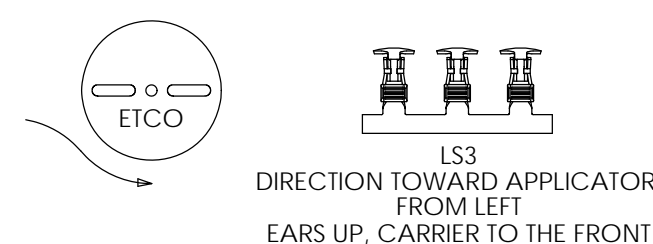
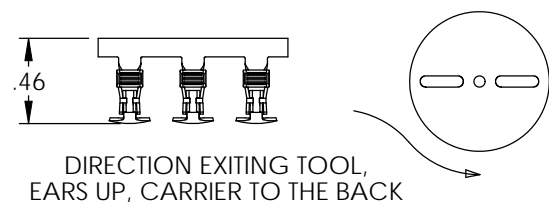
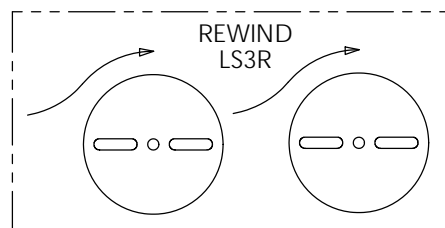
NOTE:

- 1.) MAT'L: .016 THK., BRASS, #2 TEMPER (HALF HARD), PER ETCO METAL CODE NO. 00177.
- 2.) MAT'L: .016 THK., PRE-TINNED BRASS, #2 TEMPER (HALF HARD), PER ETCO METAL CODE NO. 01240.
- 3.) PARTS MAY BE COATED WITH A LIGHT FILM OF LUBRICATION USED IN THE MANUFACTURING PROCESS.
- 4.) WIRE RANGE: 20-16 AWG.

Rev.	Description of Change/ SCN#	Date
1	REDRAWN ON SOLIDWORKS NO CHANGES ORG.ENG.DWG.DATE: 11-5-91	10-14-05
2	COMPLETED P/C LIST SCJ	9-16-08



SECTION A-A



THIS PRINT IS THE PROPERTY OF ETCO INCORPORATED. NO PART OF THIS DESIGN MAY BE USED IN ANY WAY WITHOUT WRITTEN CONSENT FROM ETCO INCORPORATED.

UNCONTROLLED COPY

<p>THIRD ANGLE PROJECTION TOLERANCES UNLESS OTHERWISE SPECIFIED INCHES: .XX - $\pm .030$.XXX - $\pm .015$ ANGLES: $\pm 5^\circ$</p>	<p>TOOL NO. 0209</p>	<p>Title: BUTTON CONTACT</p>		
		<p>DO NOT SCALE DWG.</p>	<p>Drawn By: S.JOHNSON</p>	<p>Date: 10-14-05</p>
<p>ETCO Incorporated Engineered Products 25 Bellows Street Warwick, RI 02888 Phone: (401) 467-2400 Fax: (401) 467-9230 www.ETCO.com</p>		<p>Chk'd/App'd By:</p>	<p>Scale: 12X</p>	<p>Size B</p>
		<p>Dwg. No.: LS3 cust</p>		