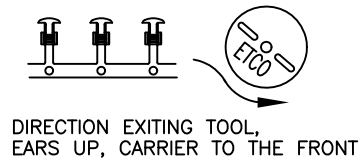
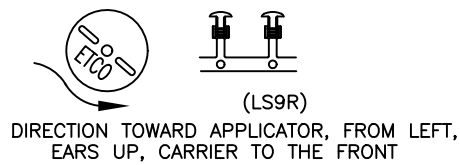
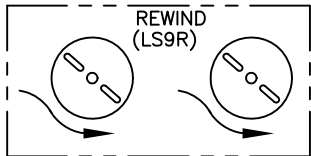
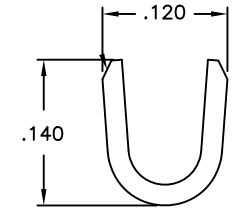
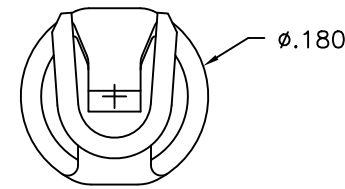
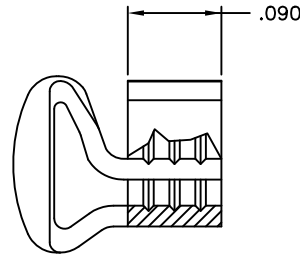
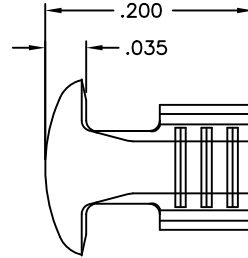


NOTE:

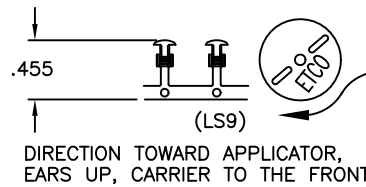
- 1.) MAT'L: .020 THK, BRASS, #2 TEMPER (HALF HARD), PER ETCO METAL © CODE NO. 00399.
- 2.) PARTS MAY BE COATED WITH A LIGHT FILM OF LUBRICATION USED IN THE MANUFACTURING PROCESS.
- 3.) WIRE RANGE: 22-18 AWG

P/C	DESCRIPTION	REWIND
09734	LS9-HB	NO
09832	LS9R-HB	YES

Rev.	Description of Change/ SCN#	Date



FULL VIEW  
REFERENCE ONLY



UNCONTROLLED COPY				
 THIRD ANGLE PROJECTION	TOOL NO. 0219	Title: BUTTON CONTACT		
		DO NOT SCALE DWG.	Drawn By: P. McCormick	Date: 10-15-96
TOLERANCES UNLESS OTHERWISE SPECIFIED .XX - ±.030 .XXX - ±.015 Angles - ±5°		ETCO Incorporated Engineered Products 25 Bellows Street Warwick, R.I. 02888 Phone: (401)467-2400 FAX: (401)467-9230	Checked: _____	Scale: 8:1
			Dwg. No.: C-LS9	Size: B

THIS PRINT IS THE PROPERTY OF ETCO INCORPORATED. NO PART OF THIS DESIGN MAY BE USED IN ANY WAY WITHOUT WRITTEN CONSENT FROM ETCO INCORPORATED.

CUSTOMER DRAWING