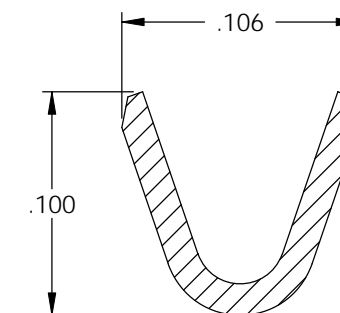
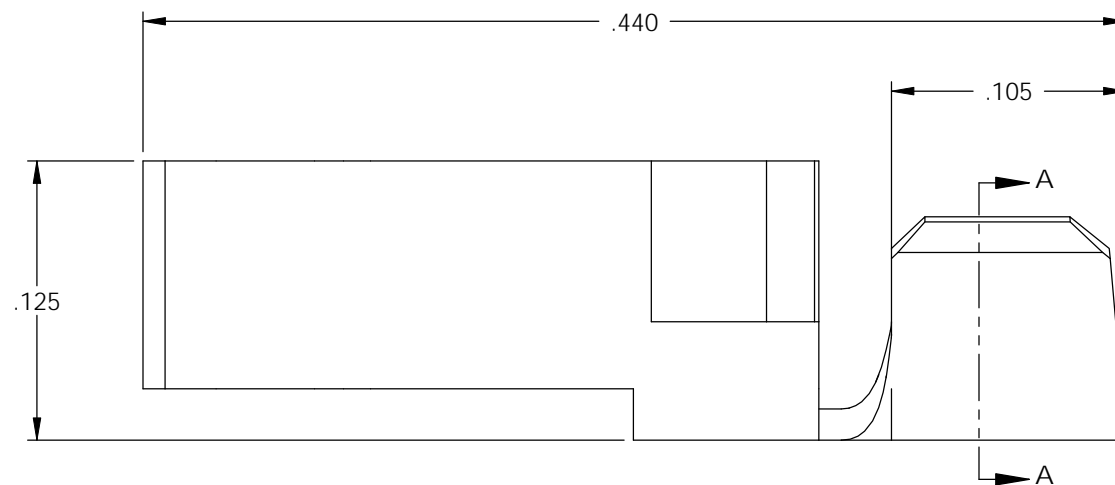
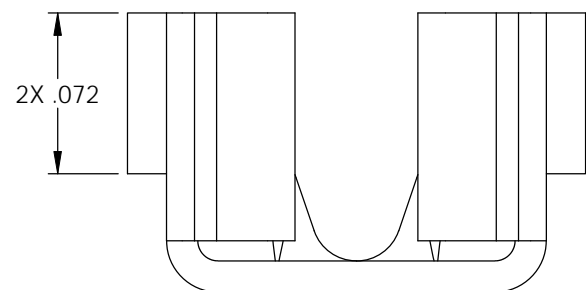
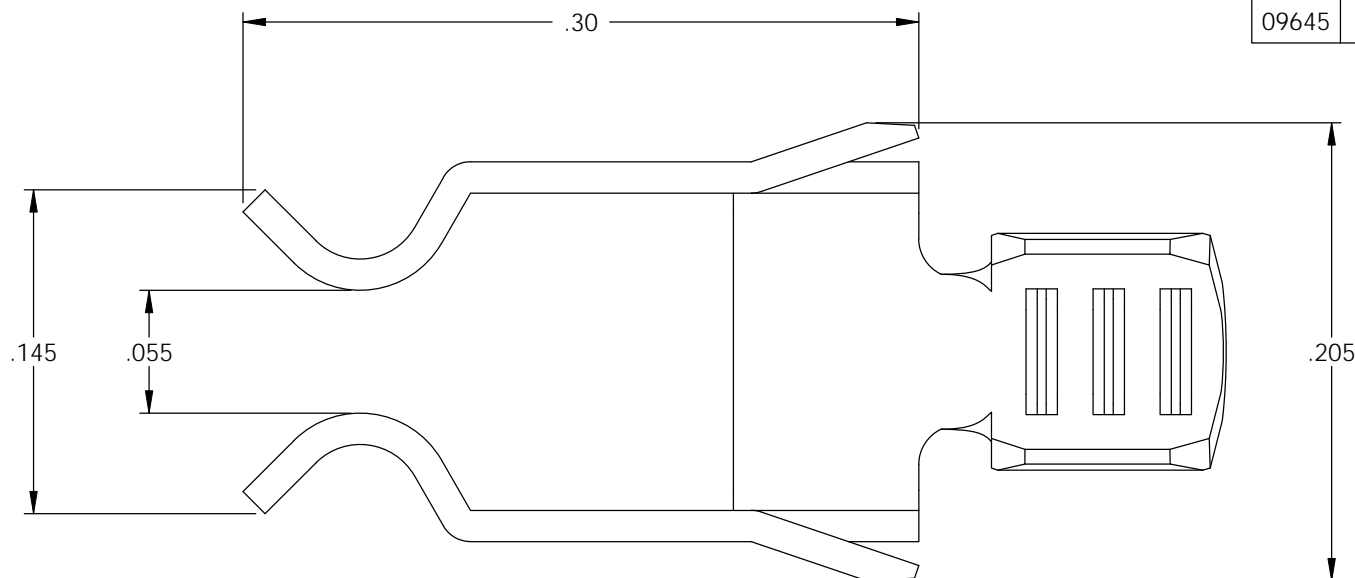
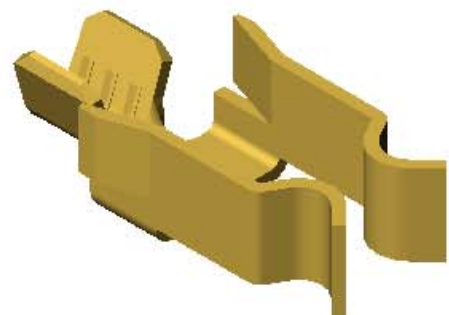


NOTES:

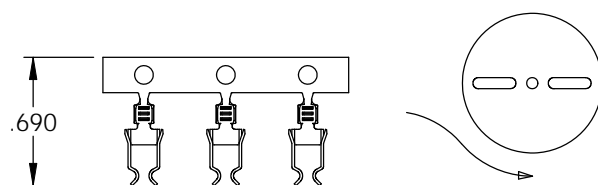
1. MATERIAL: .014 THICK, BRASS, #8 TEMPER (SPRING HARD), PER ETCO METAL CODE 00055.
2. PARTS MAY BE COATED WITH A LIGHT FILM OF LUBRICATION USED IN THE MANUFACTURING PROCESS.
3. WIRE RANGE: 18 AWG.

P/C	DESCRIPTION
09645	LSWB-3-HB

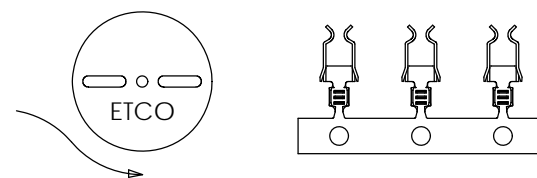
Rev.	Description of Change/ SCN#	Date
3	SCN# 140162 SCJ ORG.ENG.DWG.DATE: 6-13-86	1-22-08



SECTION A-A
SCALE 12 : 1



DIRECTION EXITING TOOL,
EARS UP, CARRIER TO THE BACK



DIRECTION TOWARD APPLICATOR,
EARS UP, CARRIER TO THE FRONT

UNCONTROLLED COPY

<p>THIRD ANGLE PROJECTION TOLERANCES UNLESS OTHERWISE SPECIFIED INCHES: .XX - ±.030 .XXX - ±.015 ANGLES: ±5°</p>	<p>TOOL NO. 0453</p>	<p>Title: CLIP</p>		
		<p>DO NOT SCALE DWG.</p>	<p>Drawn By: S.JOHNSON</p>	<p>Date: 1-17-08</p>
<p>ETCO Incorporated Engineered Products 25 Bellows Street Warwick, RI 02888 Phone: (401) 467-2400 Fax: (401) 467-9230 www.ETCO.com</p>		<p>Chk'd/App'd By:</p>	<p>Scale: 12X</p>	<p>Size B</p>
		<p>Dwg. No.: LSWB-3 cust</p>		