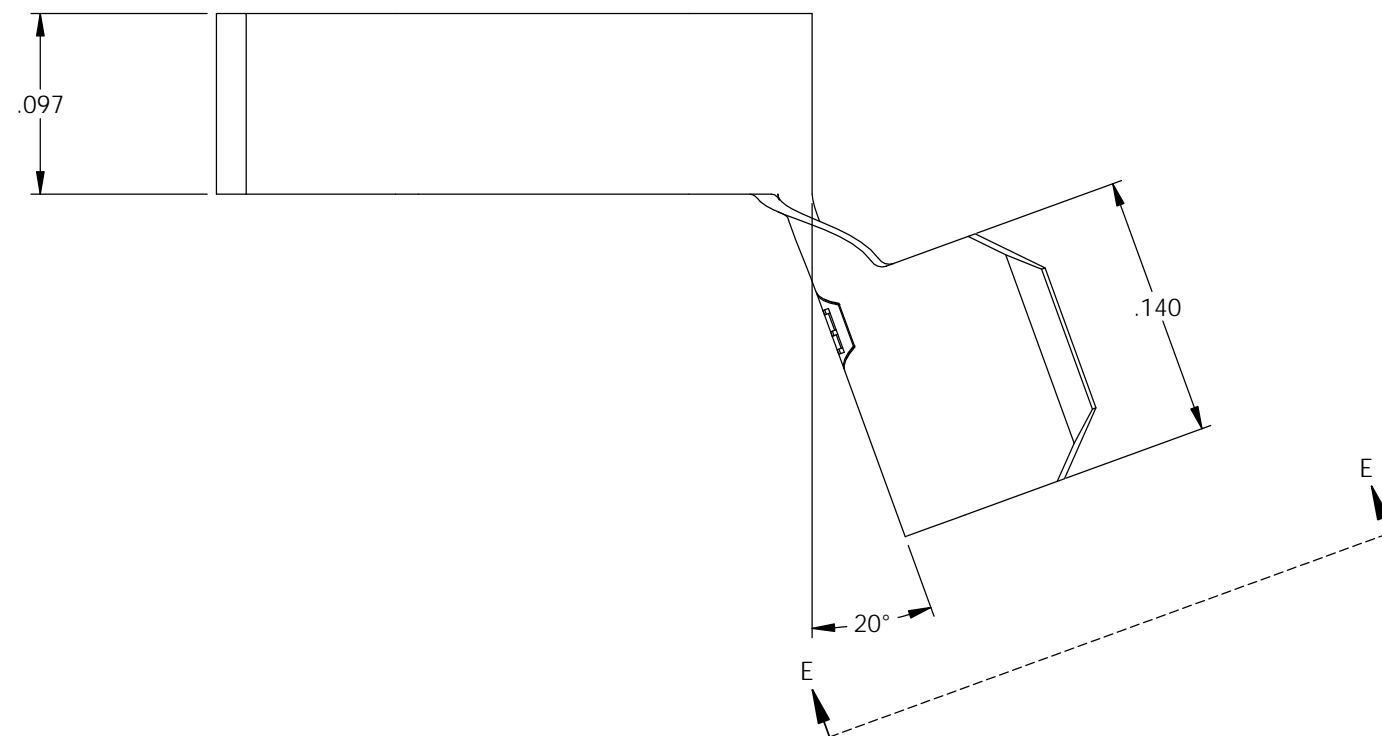
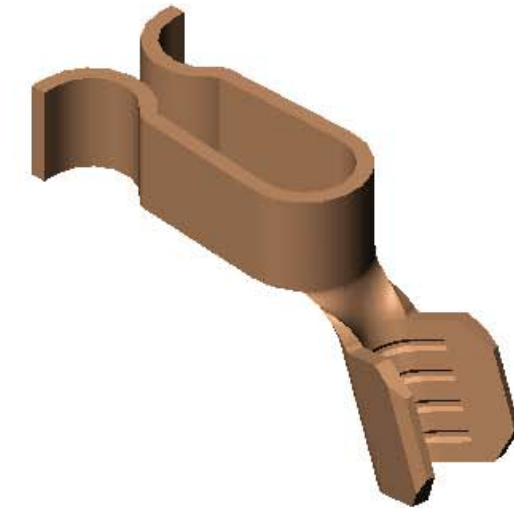
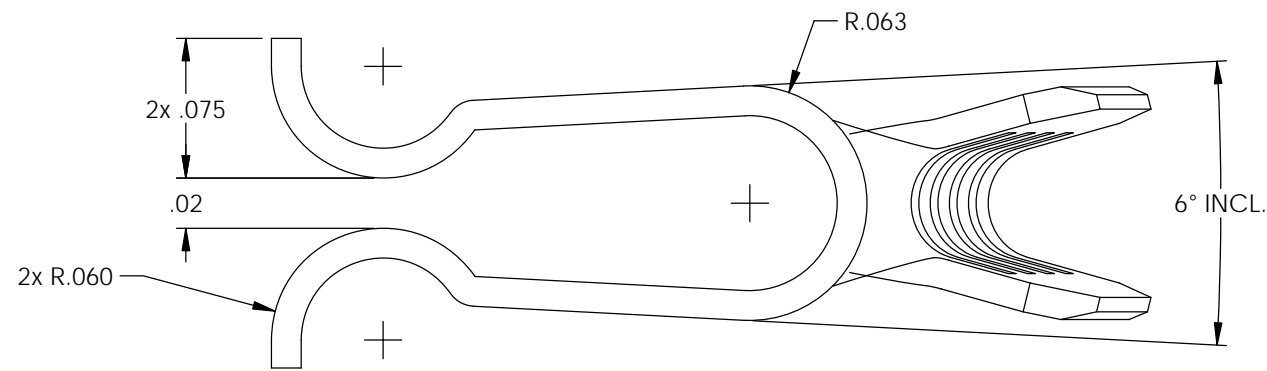


NOTES:

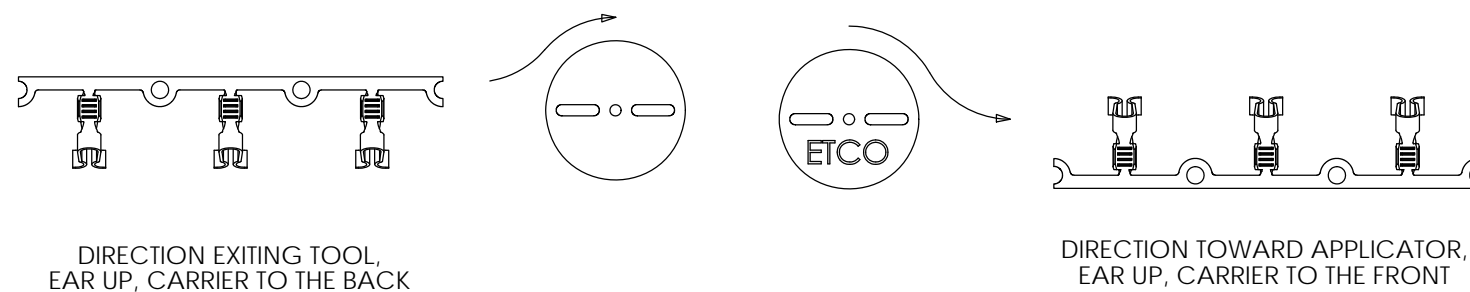
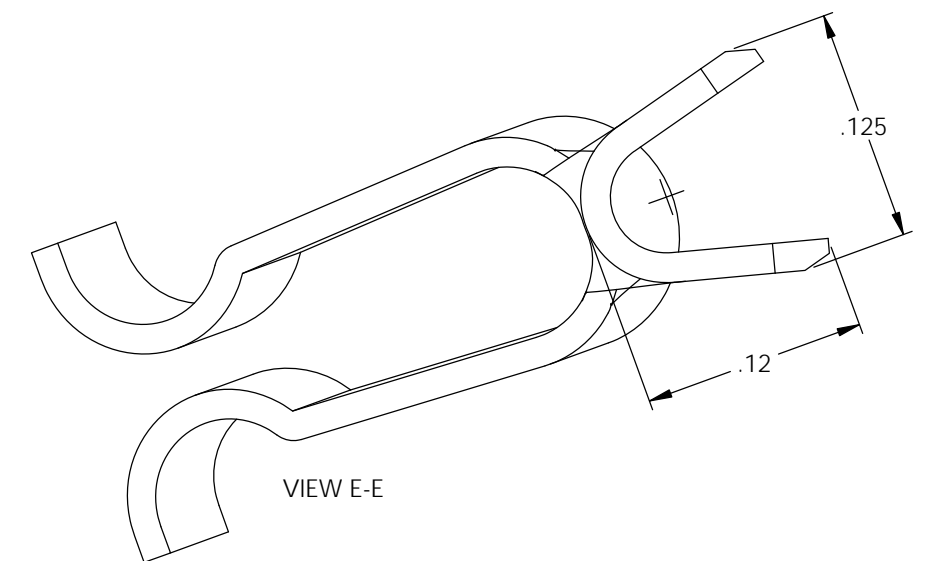
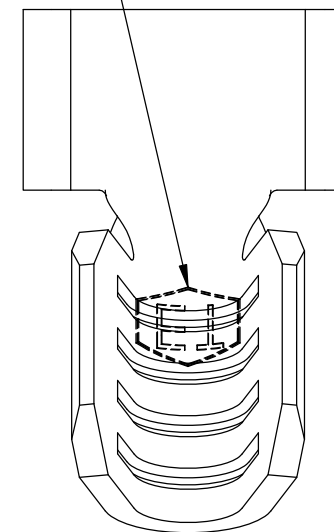
1. MATERIAL: .016 THICK PHOSPHOR BRONZE, #3 TEMPER (3/4 HARD) PER ETCO METAL CODE 2-3535.
2. WIRE RANGE: 18-16 AWG.

P/C	DESCRIPTION
09717	LSWB1-PB

Rev.	Description of Change/ SCN#	Date
-	Redrawn in SW/No chgs SCJ	1/13/14



Use ETCO Stamp #6 on Die Side



THIS PRINT IS THE PROPERTY OF ETCO INCORPORATED. NO PART OF THIS DESIGN MAY BE USED IN ANY WAY WITHOUT WRITTEN CONSENT FROM ETCO INCORPORATED.

UNCONTROLLED COPY

<p>THIRD ANGLE PROJECTION TOLERANCES UNLESS OTHERWISE SPECIFIED INCHES: .XX - ±.030 .XXX - ±.015 ANGLES: ±5°</p>	<p>TOOL NO.</p> <p>0217</p>	<p>Title:</p> <p>Contact</p>		
	<p>ETCO</p>	<p>DO NOT SCALE DWG.</p> <p>ETCO Incorporated Engineered Products 25 Bellows Street Warwick, RI 02888 Phone: (401) 467-2400 Fax: (401) 467-9230 www.ETCO.com</p>	<p>Drawn By: S.Johnson</p> <p>Chk'd/App'd By:</p>	<p>Date: 1/13/14</p> <p>Scale: 10X</p> <p>Size B</p>
		<p>Dwg. No.: LSWB1 cust</p>		