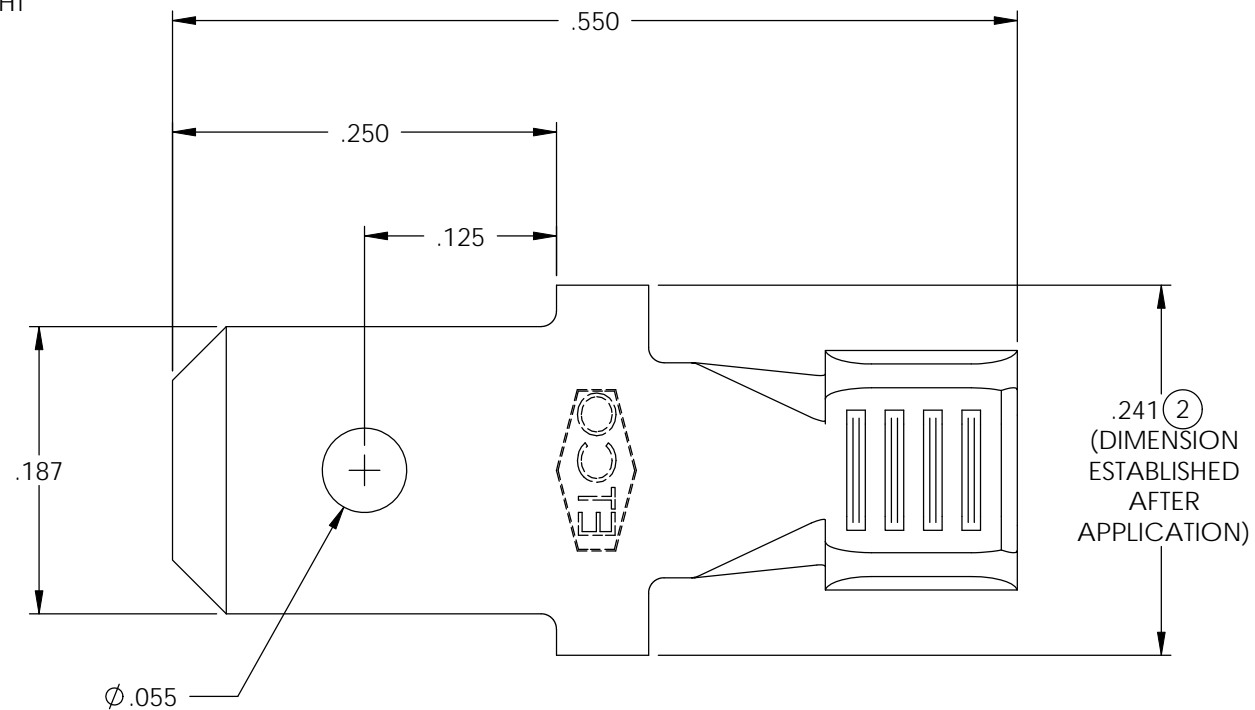


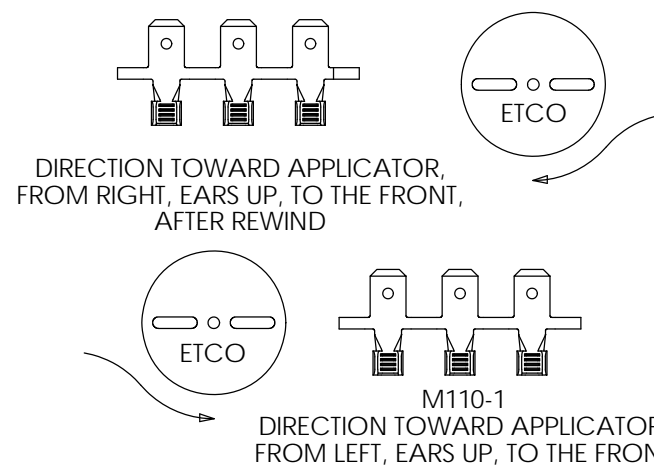
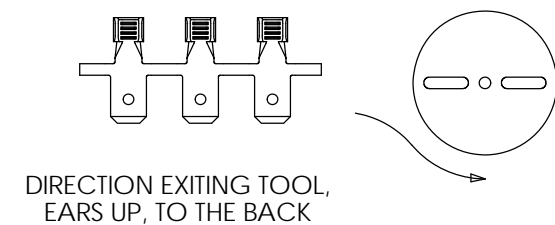
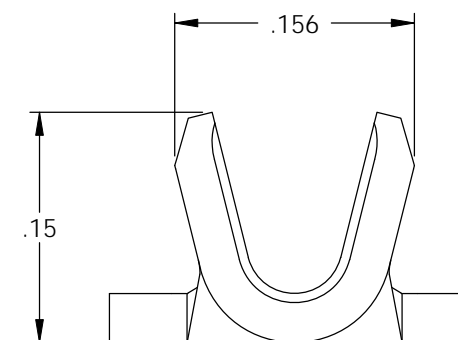
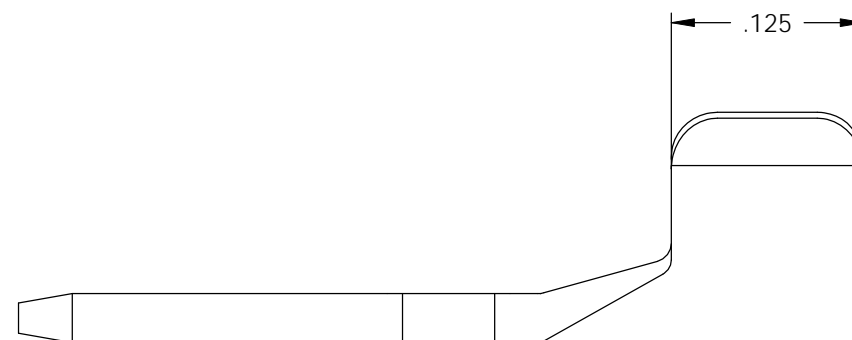
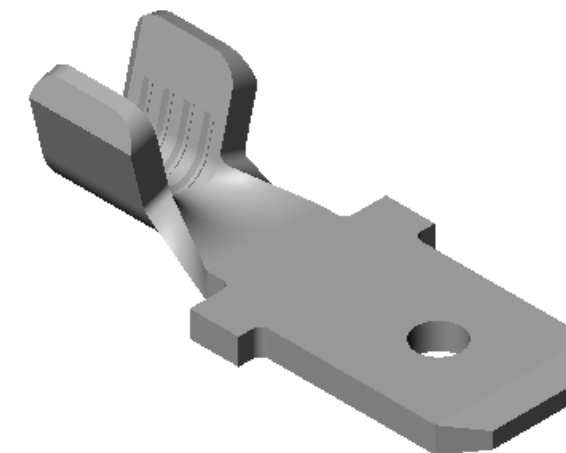
NOTE:

- 1.) MAT'L: .032, PRE-TINNED BRASS, #2 TEMPER (HALF HARD), PER ETCO METAL CODE NO. 01722.
- 2.) PARTS MAY BE COATED WITH A LIGHT FILM OF LUBRICATION USED IN THE MANUFACTURING PROCESS.
- 3.) WIRE RANGE: 20-18 AWG



P/C	DESCRIPTION	MAT'L	REWIND	UL	cUL
07952	M111R-THB	NOTE 1	YES	X	X
07934	M110-1-THB	NOTE 1	NO	X	X

Rev.	Description of Change/ SCN#	Date
1	SCN# 102131 SCJ ORG.ENG.DWG.DATE: 7-22-92	2-24-03
2	ECR #790 JMR	8-03-11



UNCONTROLLED COPY

<p>THIRD ANGLE PROJECTION TOLERANCES UNLESS OTHERWISE SPECIFIED INCHES: .XX - ±.030 .XXX - ±.015 ANGLES: ±5°</p>	<p>TOOL NO. 0669</p>	<p>Title: MALE DISCONNECT TERMINAL WITH HOLE</p>		
		<p>DO NOT SCALE DWG.</p>	<p>Drawn By: S.JOHNSON</p>	<p>Date: 2-24-03</p>
<p>ETCO Incorporated Engineered Products 25 Bellows Street Warwick, RI 02888 Phone: (401) 467-2400 Fax: (401) 467-9230 www.ETCO.com</p>		<p>Chk'd/App'd By:</p>	<p>Scale: 8X</p>	<p>Size B</p>
		<p>Dwg. No.: M110-1, M111R cust</p>		