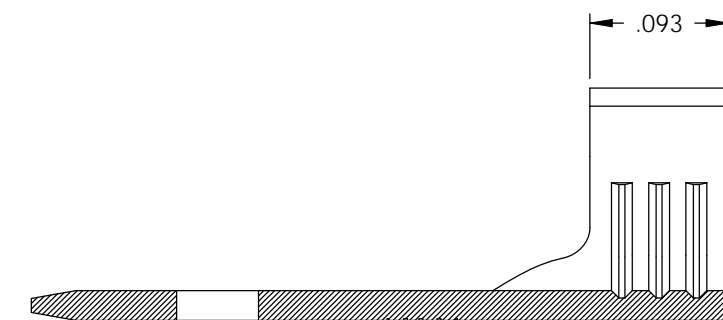
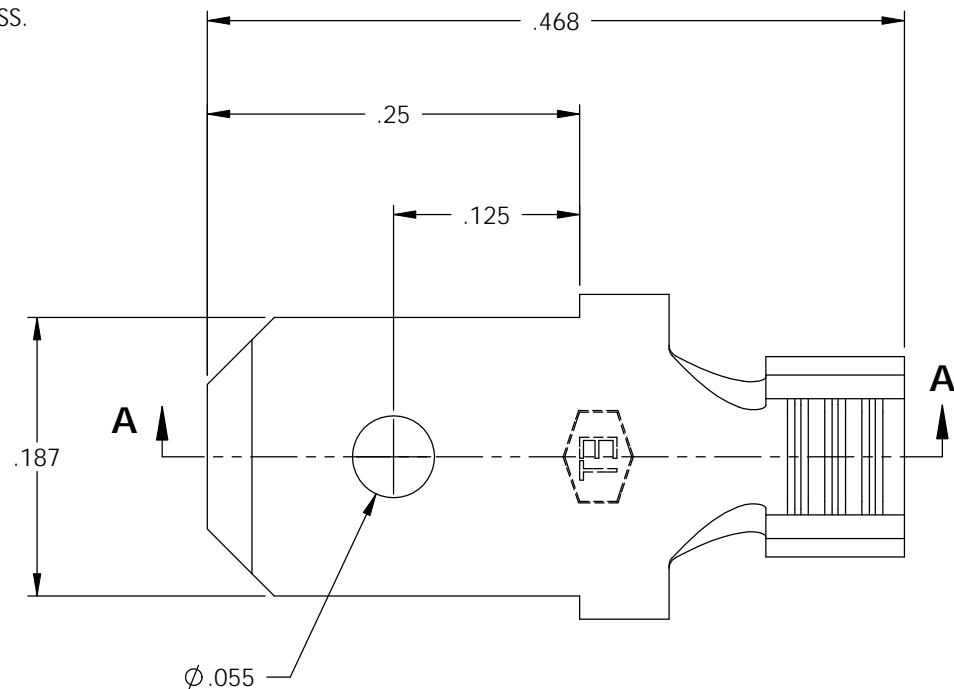
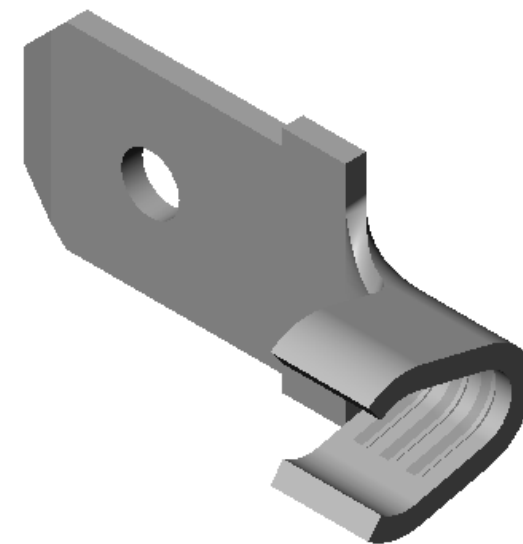
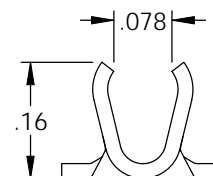


NOTES:

1. MATERIAL: .020 THICK C26000 BRASS
1/2 HARD; PER ETCO METAL CODE 00280.
2. MATERIAL: .020 THICK PRE-TINNED C26000 BRASS
1/2 HARD; PER ETCO METAL CODE 01350.
3. MATERIAL: .020 THICK PRE-NICKEL PLATED STEEL,
1/4 HARD; PER ETCO METAL CODE 03170.
4. PARTS MAY BE COATED WITH A LIGHT FILM OF
LUBRICATION USED IN THE MANUFACTURING PROCESS.
5. WIRE RANGE: 16-20 AWG.

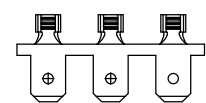


SECTION A-A
SCALE 8 : 1

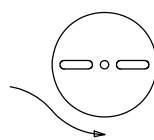


P/C	DESCRIPTION	MAT'L	UL	SP
07920	M110-HB	NOTE 1	X	X
07930	M110-THB	NOTE 2	X	X
07931	M110-NPS	NOTE 3		

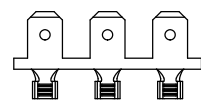
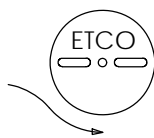
Rev.	Description of Change/ SCN#	Date
1	REDRAWN ON SOLIDWORKS NO CHANGES SCJ ORG.ENG.DWG.DATE: 10-20-92	2-6-06
2	ADDED P/C SCN#140162 SCJ	8-22-07



DIRECTION EXITING TOOL
EARS UP, TO THE BACK



DIRECTION TOWARD APPLICATOR,
EARS UP, TO THE FRONT



UNCONTROLLED COPY

 THIRD ANGLE PROJECTION TOLERANCES UNLESS OTHERWISE SPECIFIED INCHES: .XX - ±.030 .XXX - ±.015 ANGLES: ±5°	TOOL NO. 0140	Title: MALE DISCONNECT	
		DO NOT SCALE DWG. Drawn By: S.Johnson Date: 2-6-06	Chk'd/App'd By: Scale: 8X Size: B
		Dwg. No.: M110 cust	
		ETCO Incorporated Engineered Products 25 Bellows Street Warwick, RI 02888 Phone: (401) 467-2400 Fax: (401) 467-9230 www.ETCO.com	