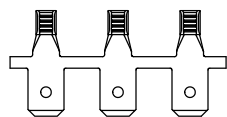
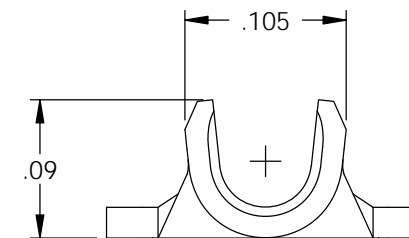
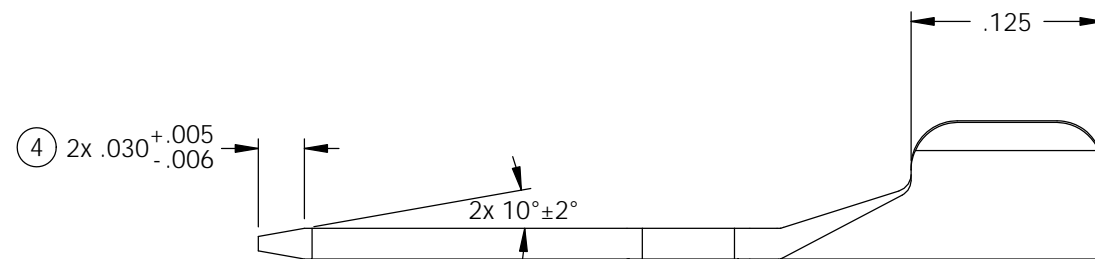
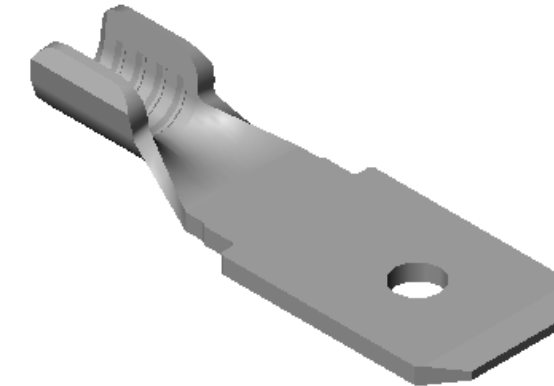
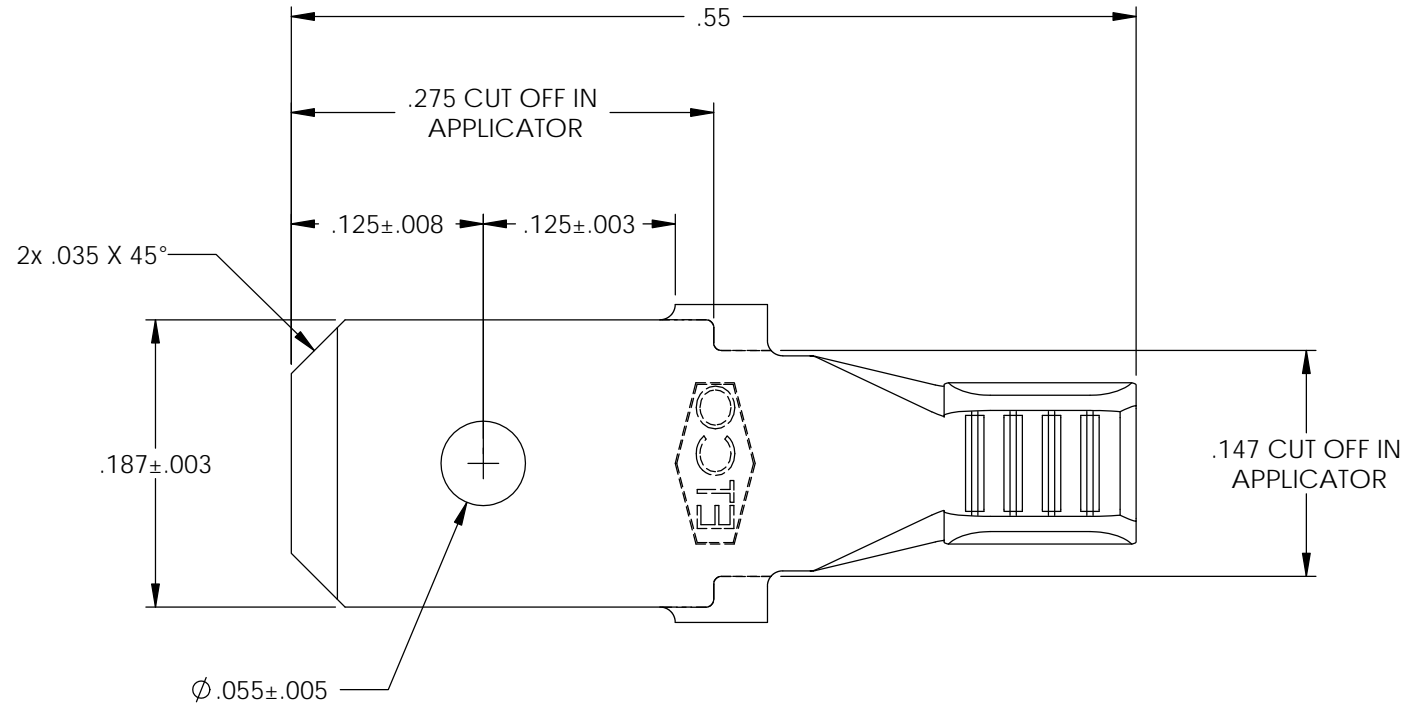


NOTE:

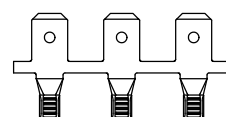
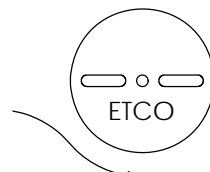
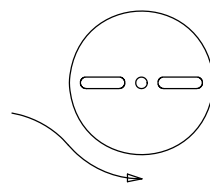
- 1.) MAT'L: .020 ± .001, PRE-TINNED BRASS, #2 TEMPER (HALF HARD), PER ETCO METAL CODE NO. 01370.
- 2.) MAT'L: .020 ± .001, BRASS, #2 TEMPER (HALF HARD), PER ETCO METAL CODE NO. 00291.
- 3.) PARTS MAY BE COATED WITH A LIGHT FILM OF LUBRICATION USED IN THE MANUFACTURING PROCESS.
- 4.) WIRE RANGE: ϕ .015-.030 SOLID LEAD.

P/C	DESCRIPTION	MAT'L
07947	M113-THB	NOTE 1
07955	M113-HB	NOTE 2

Rev.	Description of Change/ SCN#	Date
1	REDRAWN ON SOLIDWORKS NO CHANGES SCJ ORG.ENG.DWG.DATE: 10-9-97	2-11-06
2	ADDED TOLERANCES SCJ	3/17/17
3	ADDED DIMS SCJ	4/24/17
4	ECR# 4649 SCJ	5/01/17



DIRECTION EXITING TOOL,
EARS UP, TO THE BACK



DIRECTION TOWARD APPLICATOR,
FROM LEFT, EARS UP, TO THE FRONT

UNCONTROLLED COPY

<p>THIRD ANGLE PROJECTION TOLERANCES UNLESS OTHERWISE SPECIFIED INCHES: .XX - ±.030 .XXX - ±.015 ANGLES: ±5°</p>	<p>TOOL NO. 0669</p>	<p>Title: .020 X .187 MALE TAB</p>	
		<p>DO NOT SCALE DWG.</p>	<p>Drawn By: S.JOHNSON Date: 2-11-06</p>
<p>ETCO Incorporated Engineered Products 25 Bellows Street Warwick, RI 02888 Phone: (401) 467-2400 Fax: (401) 467-9230 www.ETCO.com</p>		<p>Chk'd/App'd By:</p>	<p>Scale: 8X Size B</p>
<p>Dwg. No.: M113 cust</p>			