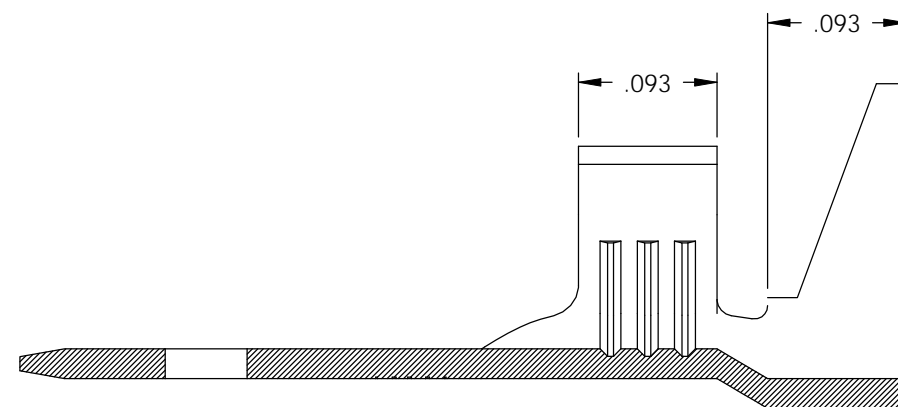
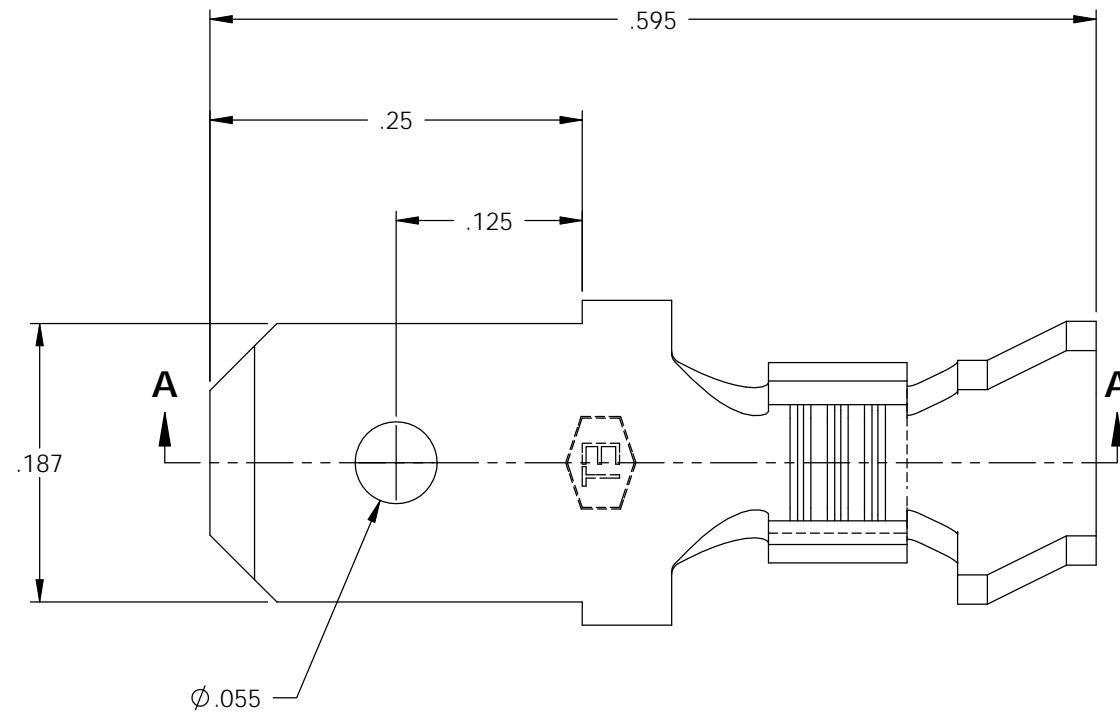


NOTES:

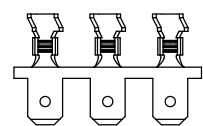
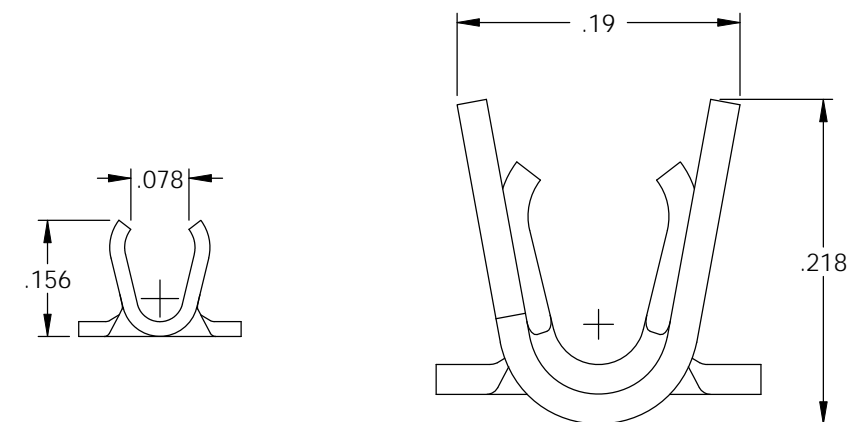
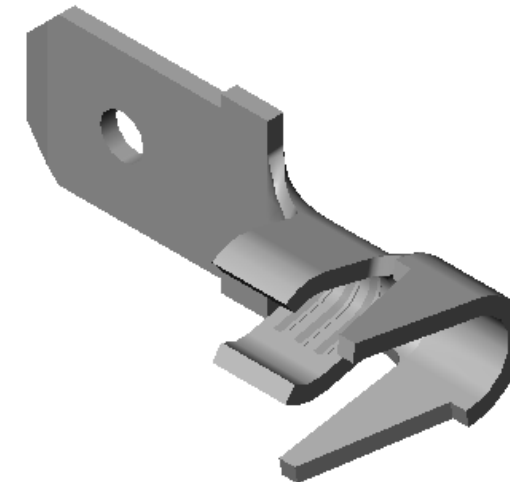
1. MATERIAL: .020 THICK C26000 BRASS
1/2 HARD; PER ETCO METAL CODE 00330.
2. MATERIAL: .020 THICK PRE-TINNED C26000 BRASS
1/2 HARD; PER ETCO METAL CODE 01410.
3. MATERIAL: .020 THICK PRE-NICKEL PLATED C26000 BRASS
1/2 HARD; PER ETCO METAL CODE 03784.
3. PARTS MAY BE COATED WITH A LIGHT FILM OF LUBRICATION
USED IN THE MANUFACTURING PROCESS.
4. WIRE RANGE: 16-20 AWG.
5. INSULATION RANGE: ϕ .075-.125.



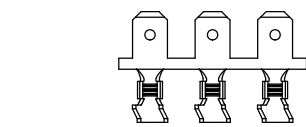
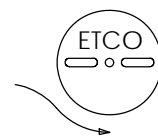
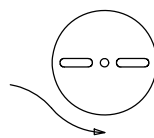
SECTION A-A
SCALE 8 : 1

| P/C | DESCRIPTION | MAT'L | |
|-------|-------------|--------|---|
| 07940 | M120-HB | NOTE 1 | X |
| 07949 | M120-NPHB | NOTE 3 | X |
| 07950 | M120-THB | NOTE 2 | X |

| Rev. | Description of Change/ SCN# | Date |
|------|---|---------|
| 1 | REDRAWN ON SOLIDWORKS NO CHANGES SCJ ORG.ENG.DWG.DATE: 10-20-92 | 2-6-06 |
| 2 | SCN# 140145 SCJ | 3-23-07 |



DIRECTION EXITING TOOL
EARS UP, TO THE BACK



DIRECTION TOWARD APPLICATOR,
EARS UP, TO THE FRONT

UNCONTROLLED COPY

| | | | |
|--|-------------------------|--|---|
| THIRD ANGLE PROJECTION TOLERANCES UNLESS OTHERWISE SPECIFIED INCHES: .XX - \pm .030 .XXX - \pm .015 ANGLES: \pm 5° | TOOL NO. 0140 | Title: MALE DISCONNECT | |
| | ETCO | DO NOT SCALE DWG. Drawn By: S.Johnson Date: 2-6-06 | Chk'd/App'd By: Scale: 8X Size: B |
| | | Dwg. No.: M120 cust | |
| | | ETCO Incorporated Engineered Products 25 Bellows Street Warwick, RI 02888 Phone: (401) 467-2400 Fax: (401) 467-9230 www.ETCO.com | |