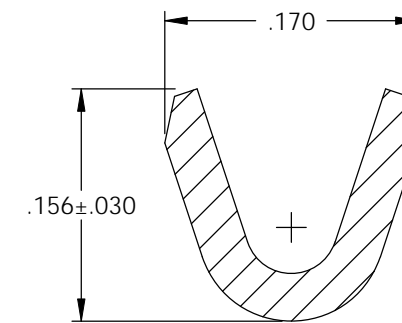
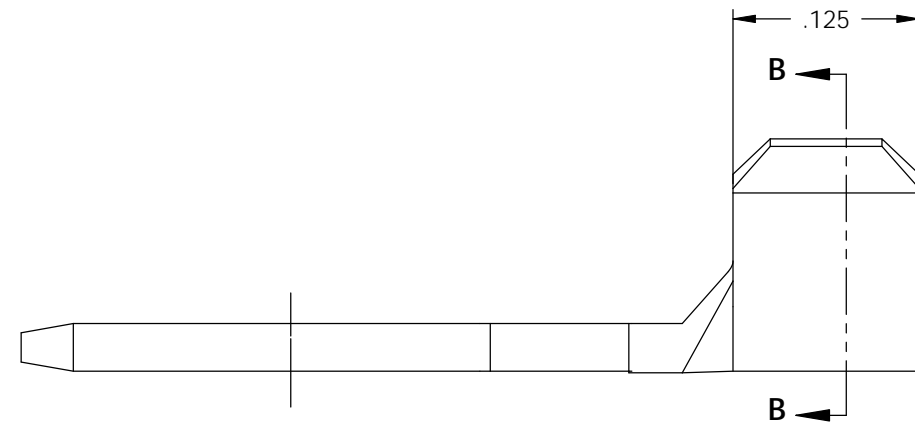
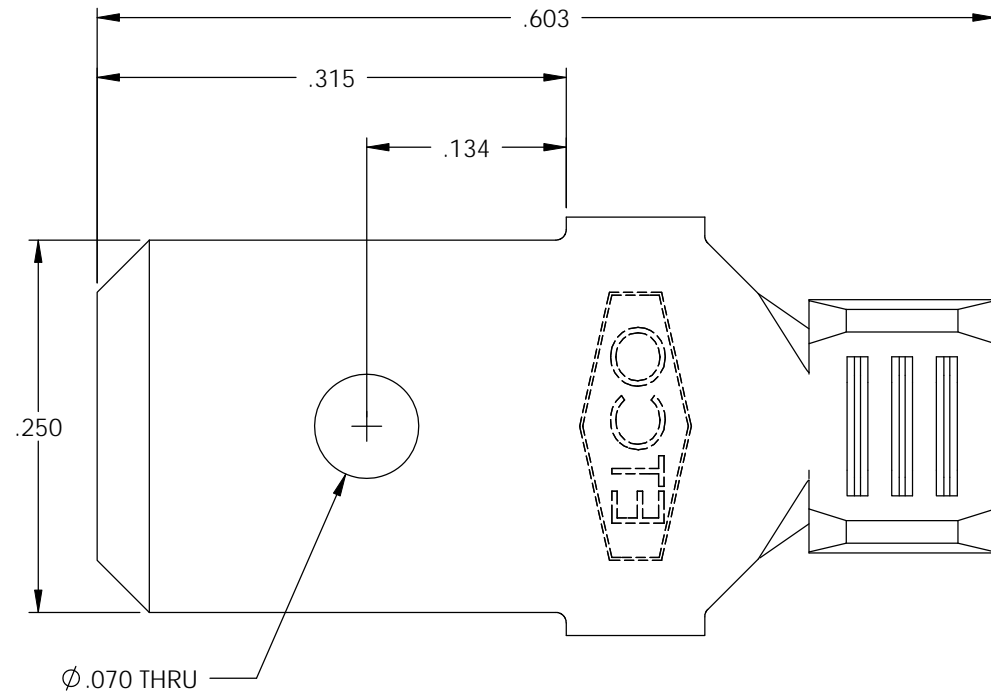
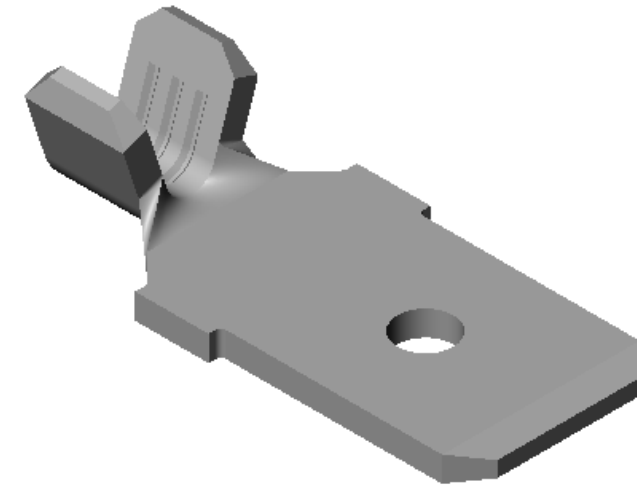


NOTE:

- 1.) .032 THK., BRASS,
#2 TEMPER (HALF HARD),
PER ETCO METAL CODE NO. 00770.
- 2.) .032 THK., PRE-TINNED BRASS,
#2 TEMPER (HALF HARD),
PER ETCO METAL CODE NO. 01830.
- 3.) PARTS MAY BE COATED WITH A
LIGHT FILM OF LUBRICATION
USED IN THE MANUFACTURING
PROCESS.
- 4.) WIRE RANGE: 20-18 AWG.

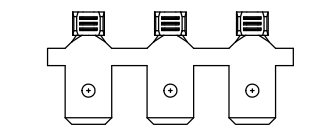


SECTION B-B
SCALE 8 : 1

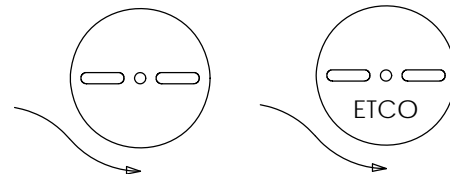


P/C	DESCRIPTION	MAT'L	UL	CS
08000	M213-HB	NOTE 1	X	X
08001	M213-THB	NOTE 2	X	X

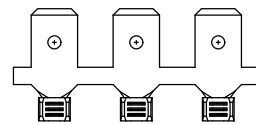
Rev.	Description of Change/ SCN#	Date
1	REDRAWN ON SOLIDWORKS NO CHANGES SCJ ORG.ENG.DWG.DATE: 3-24-93	2-8-06



DIRECTION EXITING TOOL,
EARS UP, TO THE BACK



DIRECTION TOWARD APPLICATOR,
EARS UP, TO THE FRONT



UNCONTROLLED COPY

<p>THIRD ANGLE PROJECTION TOLERANCES UNLESS OTHERWISE SPECIFIED INCHES: .XX - ±.030 .XXX - ±.015 ANGLES: ±5°</p>	<p>TOOL NO. 0146</p>	<p>Title: .032 X .250 MALE DISCONNECT</p>		
		<p>DO NOT SCALE DWG.</p>	<p>Drawn By: S.JOHNSON</p>	<p>Date: 2-10-06</p>
<p>ETCO Incorporated Engineered Products 25 Bellows Street Warwick, RI 02888 Phone: (401) 467-2400 Fax: (401) 467-9230 www.ETCO.com</p>		<p>Chk'd/App'd By:</p>	<p>Scale: 8X</p>	<p>Size B</p>
		<p>Dwg. No.: M213 cust</p>		