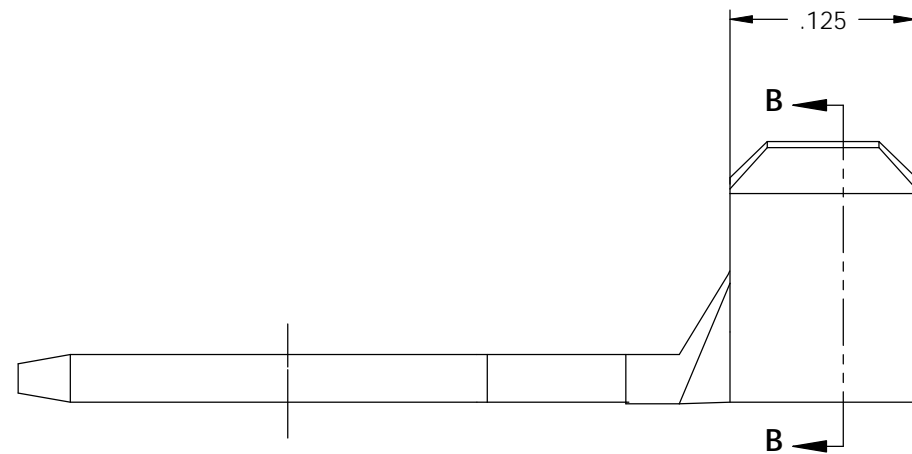
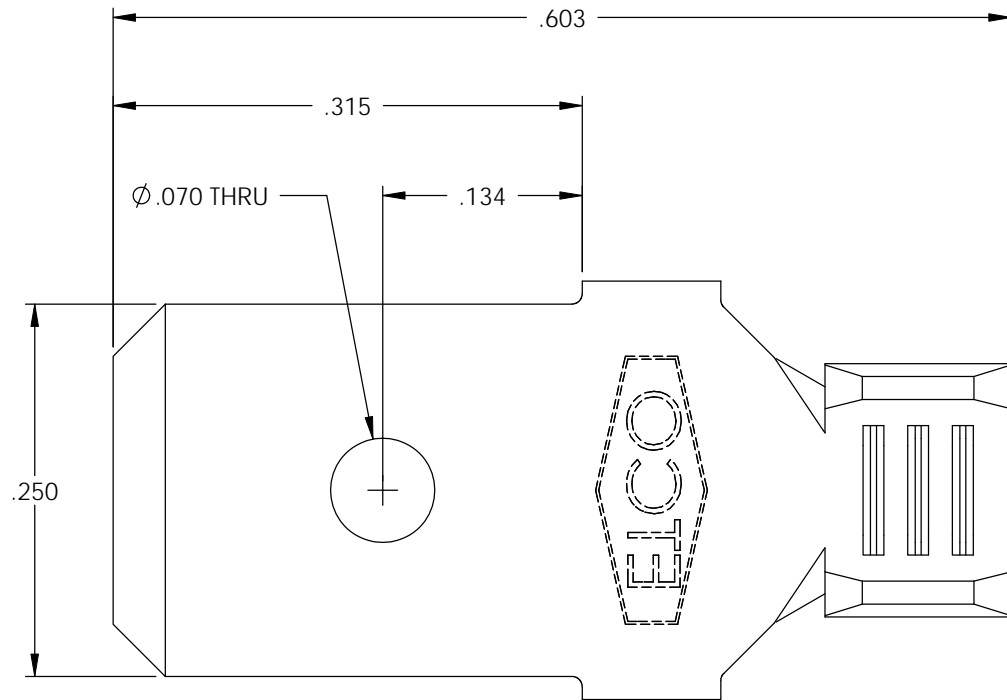



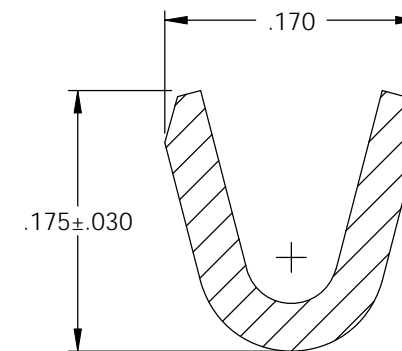
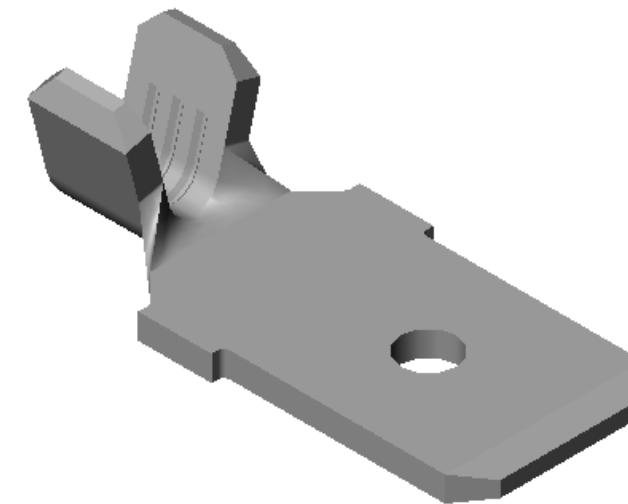
NOTE:

- 1.) .032 THK., BRASS,  
#2 TEMPER (HALF HARD),  
PER ETCO METAL CODE NO. 00770.
- 2.) .032 THK., PRE-TINNED BRASS,  
#2 TEMPER (HALF HARD),  
PER ETCO METAL CODE NO. 01830.
- 3.) PARTS MAY BE COATED WITH A  
LIGHT FILM OF LUBRICATION  
USED IN THE MANUFACTURING  
PROCESS.
- 4.) WIRE RANGE: 18-14 AWG.

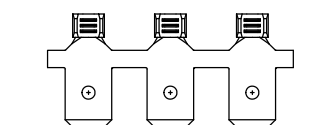


P/C	DESCRIPTION	MAT'L	
08015	M214-HB	NOTE 1	X
08016	M214-THB	NOTE 2	X

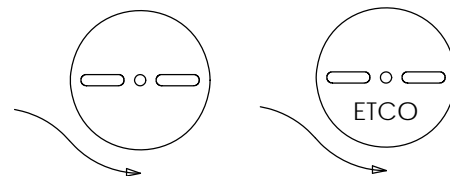
Rev.	Description of Change/ SCN#	Date
1	REDRAWN ON SOLIDWORKS NO CHANGES SCJ ORG.ENG.DWG.DATE: 3-24-93	2-8-06
2	SCN# 140145 SCJ	3-23-07



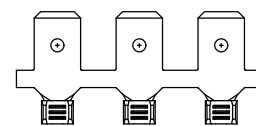
SECTION B-B  
SCALE 8 : 1





DIRECTION EXITING TOOL,  
EARS UP, TO THE BACK



DIRECTION TOWARD APPLICATOR,  
EARS UP, TO THE FRONT



# UNCONTROLLED COPY

 THIRD ANGLE PROJECTION TOLERANCES UNLESS OTHERWISE SPECIFIED INCHES: .XX - ±.030 .XXX - ±.015 ANGLES: ±5°	TOOL NO. <b>0146</b>	Title: <b>.032 X .250 MALE DISCONNECT</b>		
		DO NOT SCALE DWG. Drawn By: S.JOHNSON Date: 6-3-05	Chk'd/App'd By: Scale: 8X Size: B	Dwg. No.: <b>M214 cust</b>