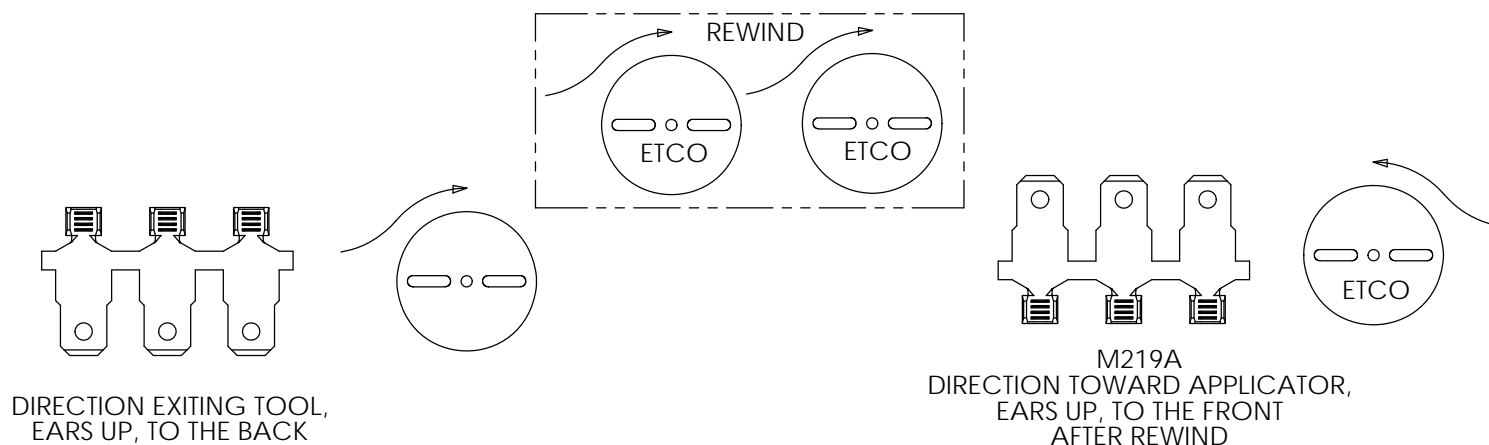
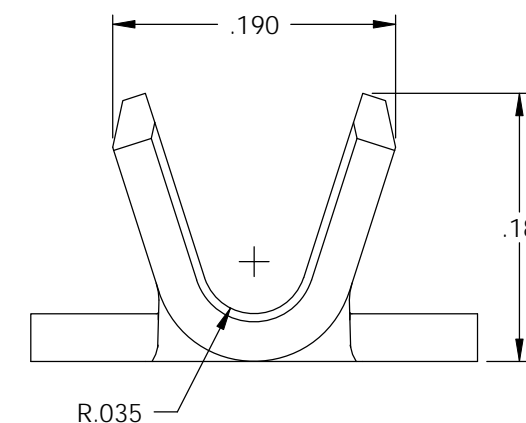
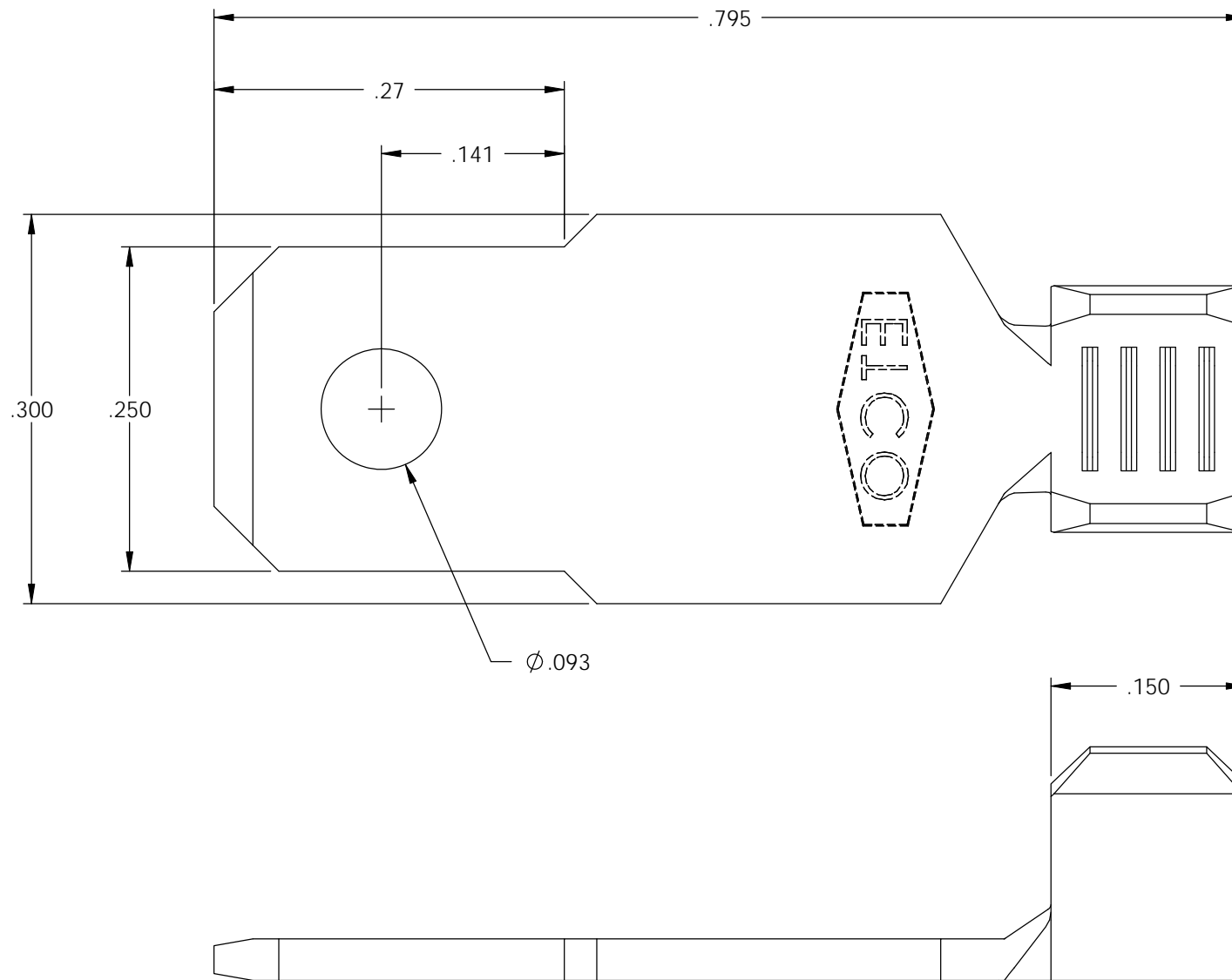
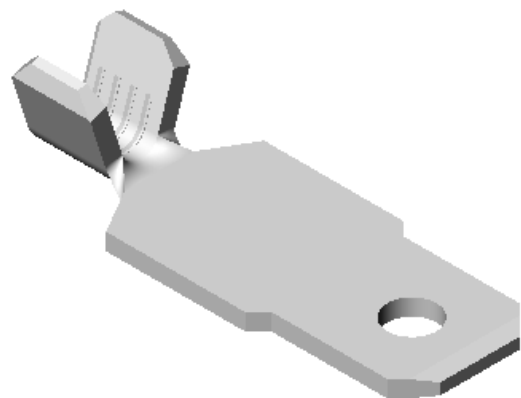


NOTES:

1. MATERIAL: .032 THICK, BRASS, #2 TEMPER (1/2 HARD) PER ETCO METAL CODE 00840.
2. MATERIAL: .032 THICK, PRE-TINNED BRASS, #2 TEMPER (1/2 HARD) PER ETCO METAL CODE 01840.
3. PARTS MAY BE COATED WITH A LIGHT FILM OF LUBRICATION USED IN THE MANUFACTURING PROCESS.
4. WIRE RANGE: 14 AWG.

| P/C | DESCRIPTION | MAT'L | REWIND |
|-------|-------------|--------|--------|
| 08057 | M219A-HB | NOTE 1 | YES |

| Rev. | Description of Change/ SCN# | Date |
|------|---|----------|
| 2 | REDRAWN ON SOLIDWORKS NO CHANGES ORG.ENG.DWG.DATE: 12-18-84 | 11-21-07 |



| UNCONTROLLED COPY | | | | | |
|--|---------------------------------|---|-----------------------------------|------------------------------|--------------------------|
| <p>THIRD ANGLE PROJECTION TOLERANCES UNLESS OTHERWISE SPECIFIED INCHES: .XX - ±.030 .XXX - ±.015 ANGLES: ±5°</p> | <p>TOOL NO. 0635</p> | <p>Title: .032 X .250 MALE DISCONNECT</p> | | | |
| | | <p>DO NOT SCALE DWG.</p> | <p>Drawn By: S.JOHNSON</p> | <p>Date: 11-21-07</p> | |
| | | <p>ETCO Incorporated Engineered Products 25 Bellows Street Warwick, RI 02888 Phone: (401) 467-2400 Fax: (401) 467-9230 www.ETCO.com</p> | <p>Chk'd/App'd By:</p> | <p>Scale: 8X</p> | <p>Size B</p> |
| | | <p>Dwg. No.: M219A cust</p> | | | |