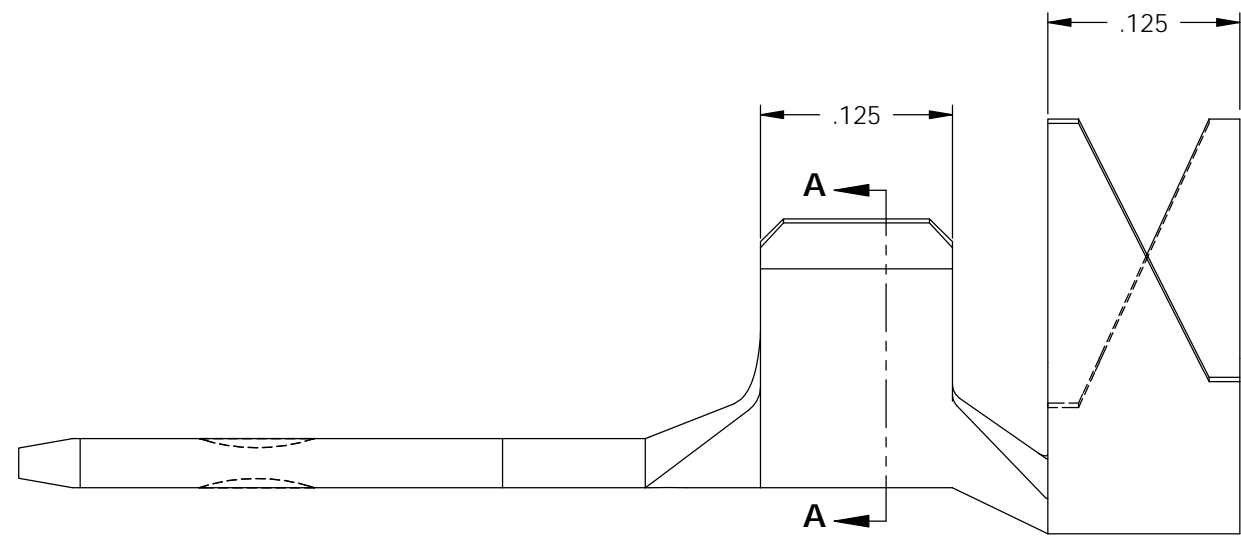
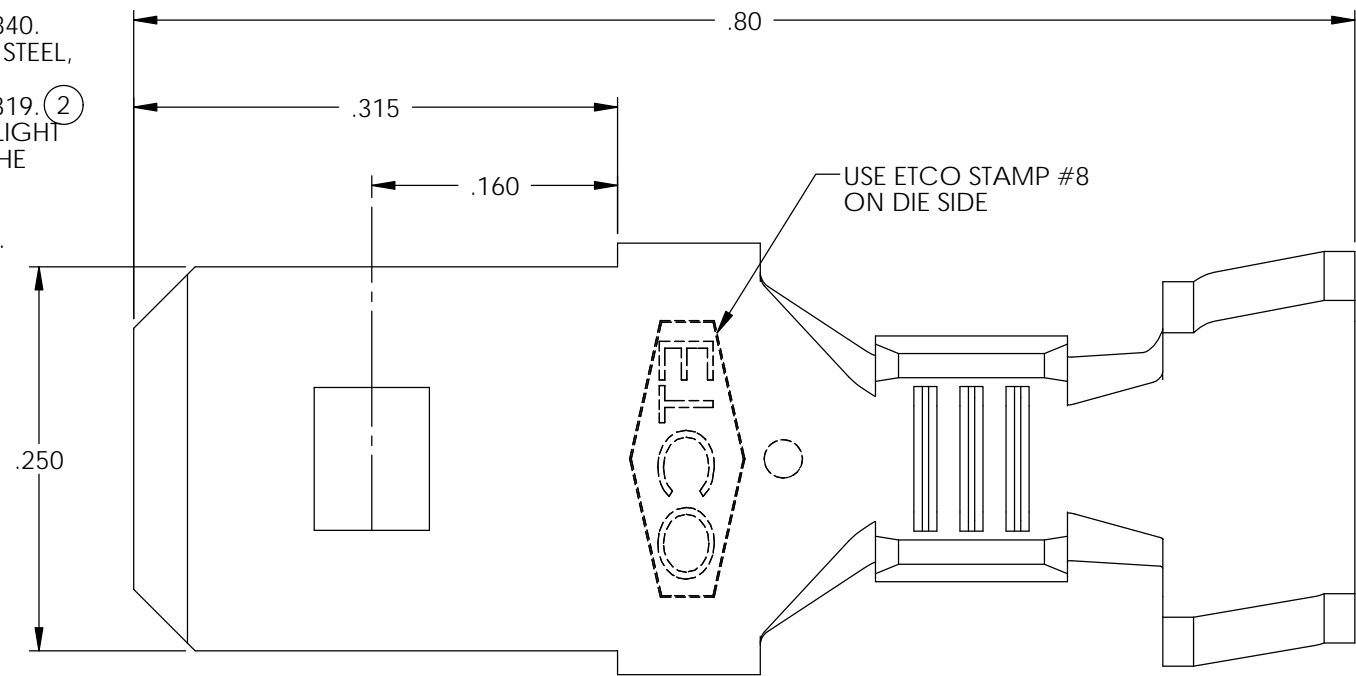
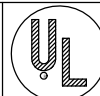


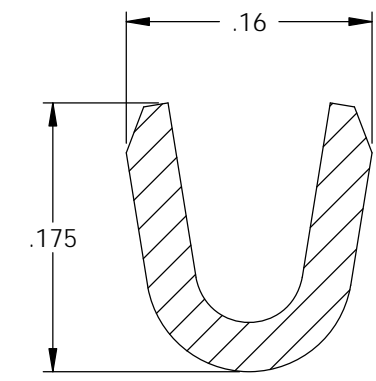
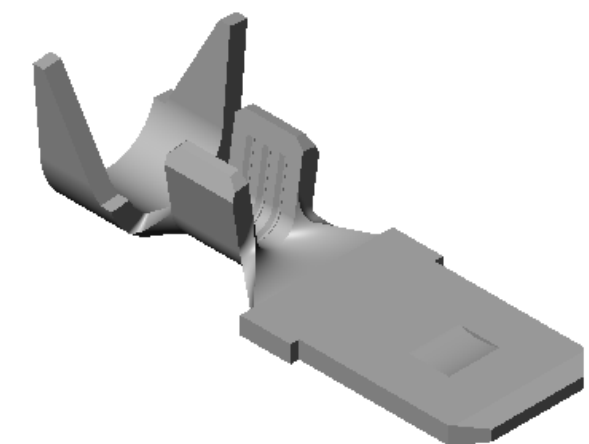
NOTE:

- 1.) MAT'L: .032 THK., BRASS, #2 TEMPER (HALF HARD), PER ETCO METAL CODE NO. 00840.
- 2.) MAT'L: .032 THK., PRE-TINNED BRASS, #2 TEMPER (HALF HARD), PER ETCO METAL CODE NO. 01840.
- 3.) MAT'L: .032 THK., NICKEL PLATED STEEL, #2 TEMPER (HALF HARD), PER ETCO METAL CODE NO. 03319. (2)
- 4.) PARTS MAY BE COATED WITH A LIGHT FILM OF LUBRICATION USED IN THE MANUFACTURING PROCESS.
- 5.) WIRE RANGE: 14-18 AWG.
- 6.) INSULATION RANGE: Ø.110-.175.

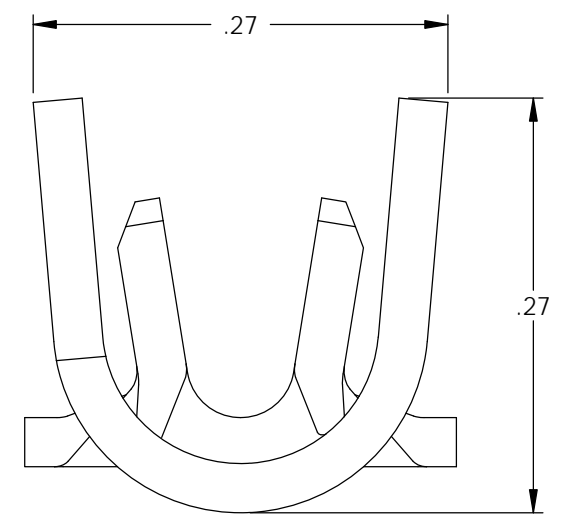


P/C	DESCRIPTION	MAT'L	
08060	M220-HB	NOTE 1	X
08070	M220-THB	NOTE 2	X
08071	M220-NPS	NOTE 3	



Rev.	Description of Change/ SCN#	Date
1	REDRAWN ON SOLIDWORKS NO CHANGES SCJ ORG.ENG.DWG.DATE: 6-19-61	2-8-06
2	SCN# 140145 SCJ	3-23-07
2	Added M220-NPS SCJ	8/12/15

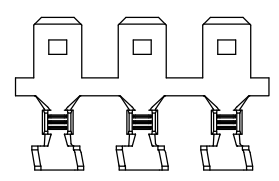
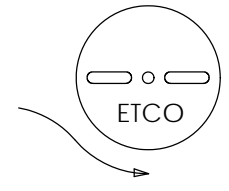
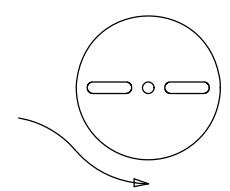
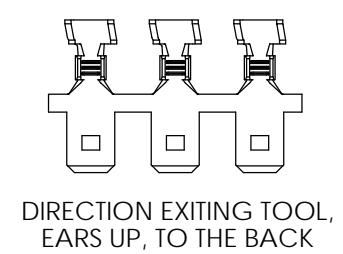


SECTION A-A  
SCALE 8 : 1



# UNCONTROLLED COPY

 THIRD ANGLE PROJECTION TOLERANCES UNLESS OTHERWISE SPECIFIED INCHES: .XX - ±.030 .XXX - ±.015 ANGLES: ±5°	TOOL NO. <b>0653</b>	Title: <b>.032 X .250 MALE TAB</b>	
		DO NOT SCALE DWG. Drawn By: S.JOHNSON Date: 2-8-06	Chk'd/App'd By: Scale: 8X Size: B
		Dwg. No.: <b>M220 cust</b>	



DIRECTION TOWARD APPLICATOR,  
EARS UP, TO THE FRONT