
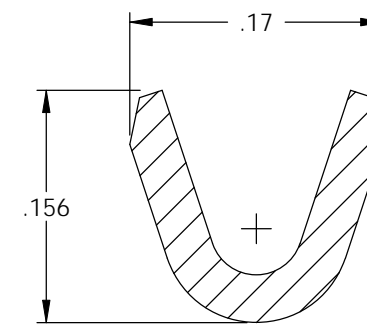
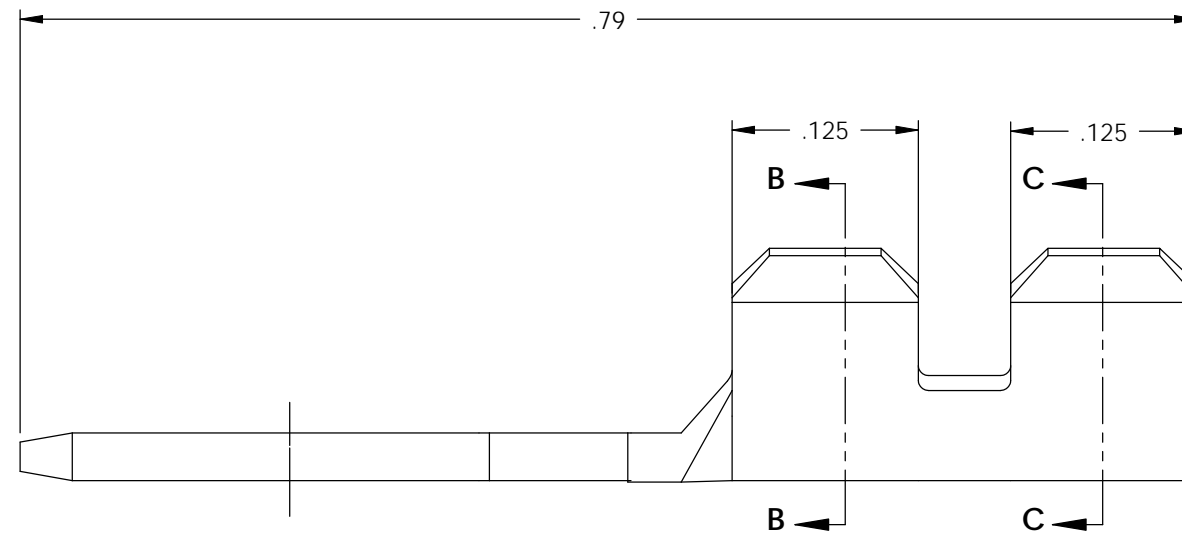
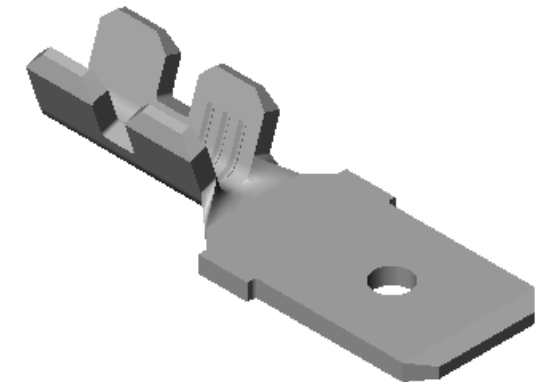
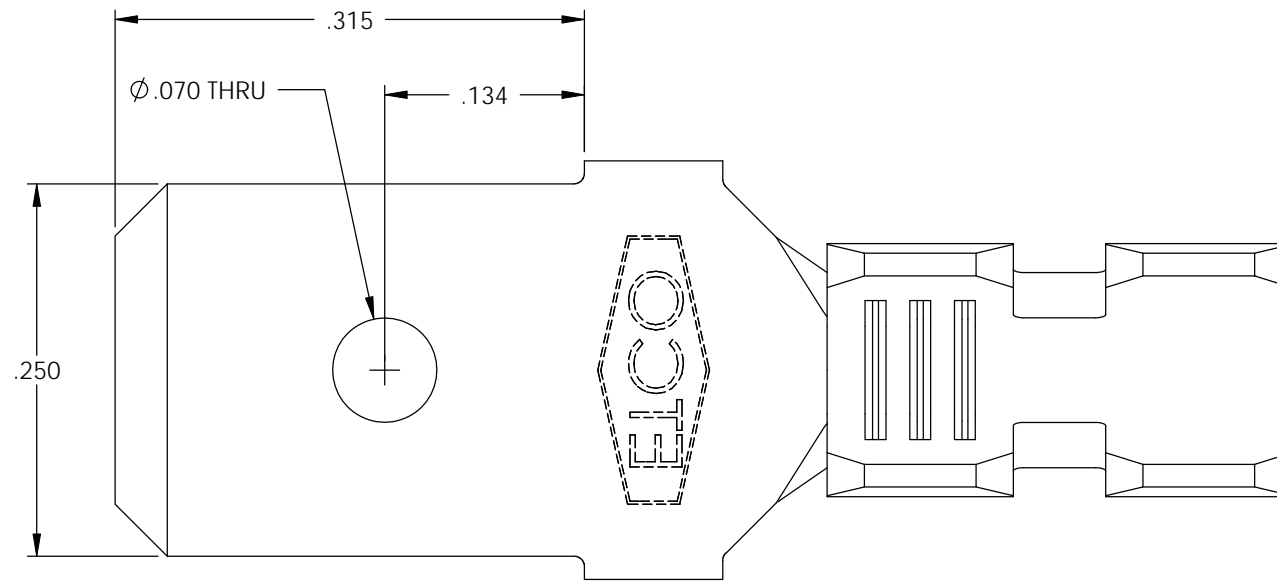


NOTE:

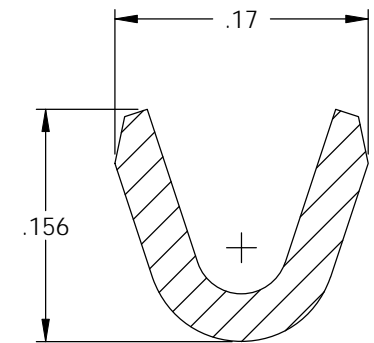
- 1.) .032 THK., BRASS, #2 TEMPER (HALF HARD), PER ETCO METAL CODE NO. 00840.
- 2.) .032 THK., PRE-TINNED BRASS, #2 TEMPER (HALF HARD), PER ETCO METAL CODE NO. 01840.
- 3.) PARTS MAY BE COATED WITH A LIGHT FILM OF LUBRICATION USED IN THE MANUFACTURING PROCESS.
- 4.) WIRE RANGE: 20-18 AWG
- 5.) INSUL RANGE: ϕ .060-.090

P/C	DESCRIPTION	MAT'L	
08093	M223-THB	NOTE 2	X
08095	M223-HB	NOTE 1	X

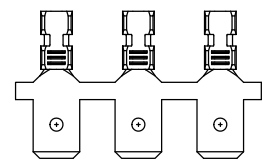
Rev.	Description of Change/ SCN#	Date
1	ACTIVATED P/C 08095 SCJ ORG.ENG.DWG.DATE: 3-22-93	6-3-05
2	SCN# 140144 SCJ	3-15-07



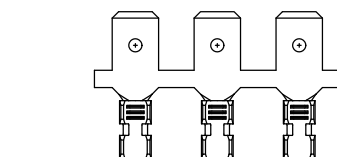
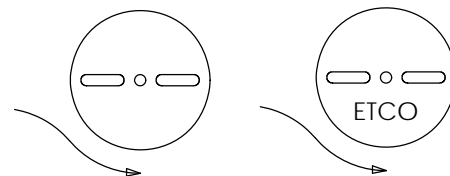
SECTION B-B
SCALE 8 : 1



SECTION C-C
SCALE 8 : 1





DIRECTION EXITING TOOL,
EARS UP, TO THE BACK



DIRECTION TOWARD APPLICATOR,
EARS UP, TO THE FRONT

UNCONTROLLED COPY

 THIRD ANGLE PROJECTION TOLERANCES UNLESS OTHERWISE SPECIFIED INCHES: .XX - \pm .030 .XXX - \pm .015 ANGLES: \pm 5°	TOOL NO. 0146	Title: .032 X .250 MALE DISCONNECT		
		DO NOT SCALE DWG.	Drawn By: S.JOHNSON	Date: 6-3-05
		ETCO Incorporated Engineered Products 25 Bellows Street Warwick, RI 02888 Phone: (401) 467-2400 Fax: (401) 467-9230 www.ETCO.com	Chk'd/App'd By:	Scale: 8X Size: B
		Dwg. No.: M223 cust		