

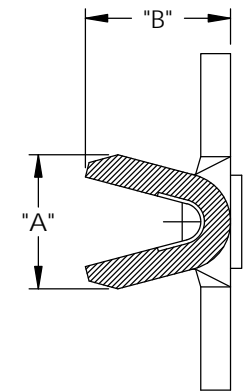
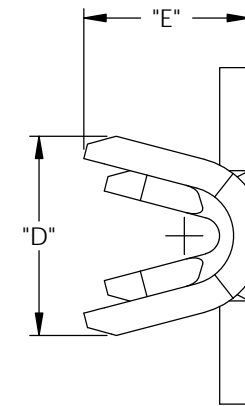
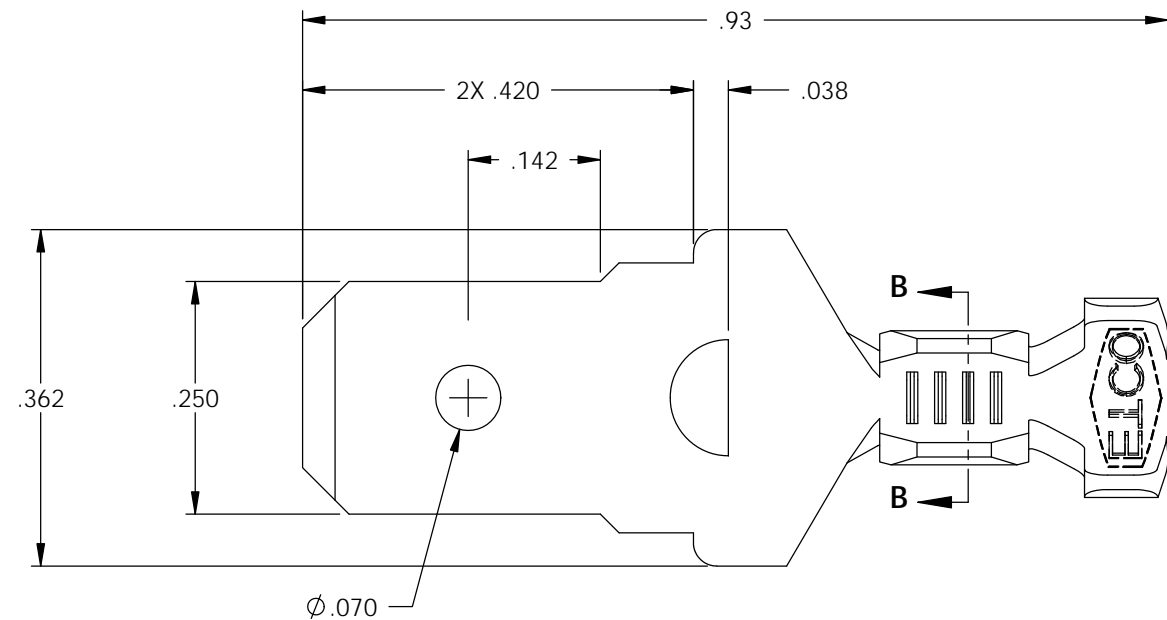
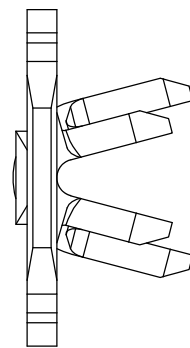


NOTES:

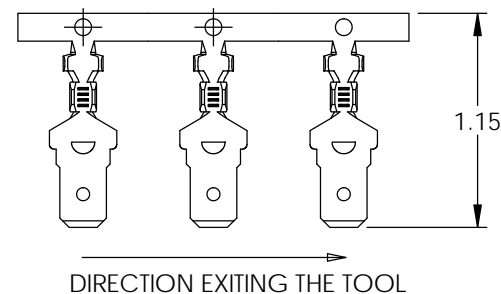
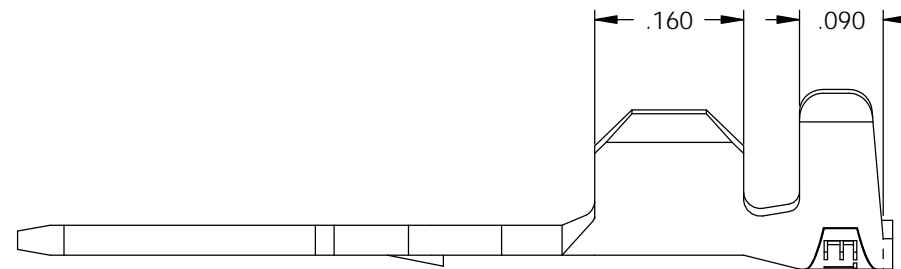
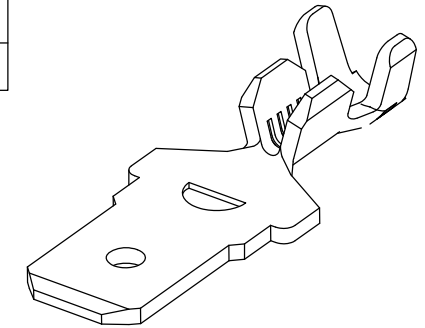
1. MATERIAL: .032 THICK BRASS, #2 TEMPER  
PER ETCO METAL CODE 00918.
2. MATERIAL: .032 THICK PRE-TINNED BRASS, #2 TEMPER  
PER ETCO METAL CODE 01852.
3. WIRE RANGE: SEE TABLE.
4. INSULATION RANGE: SEE TABLE.

P/C	DESCRIPTION	"A"	"B"	"D"	"E"	WIRE RANGE	INSUL RANGE	MAT'L		
08200	M227N-HB	.144	.156	.214	.193	20-18 AWG	Ø .070-.120	NOTE 1	X	X
08201	M227N-THB	.144	.156	.214	.193	20-18 AWG	Ø .070-.120	NOTE 2	X	X
08202	M228N-HB	.183	.193	.252	.225	16-14 AWG	Ø .115-.150	NOTE 1	X(1)	X(1)
08203	M228N-THB	.183	.193	.252	.225	16-14 AWG	Ø .115-.150	NOTE 2	X(1)	X(1)
08204	M229N-HB	.238	.245	.302	.270	12-10 AWG	Ø .150-.200	NOTE 1	X(1)	X(1)
08207	M229N-THB	.238	.245	.302	.270	12-10 AWG	Ø .150-.200	NOTE 2	X(1)	X(1)

Rev.	Description of Change/ SCN#	Date
-	INITIAL RELEASE SCJ	8-3-08
1	SCN-140506 JMR	8-7-09
2	ECR# 1664 SCJ	9/19/12





SECTION B-B  
SCALE 5 : 1



THIS PRINT IS THE PROPERTY OF ETCO INCORPORATED. NO PART OF THIS DESIGN MAY BE USED IN ANY WAY WITHOUT WRITTEN CONSENT FROM ETCO INCORPORATED.

# UNCONTROLLED COPY

 THIRD ANGLE PROJECTION TOLERANCES UNLESS OTHERWISE SPECIFIED INCHES: .XX - ±.030 .XXX - ±.015 ANGLES: ±5°	TOOL NO. <b>0793</b>	Title: <b>.032 X .250 IN-LINE MALE TERMINAL</b>		
		DO NOT SCALE DWG.	Drawn By: <b>S.JOHNSON</b>	Date: <b>8-3-08</b>
ETCO Incorporated Engineered Products 25 Bellows Street Warwick, RI 02888 Phone: (401) 467-2400 Fax: (401) 467-9230 www.ETCO.com		Chk'd/App'd By:	Scale: <b>5X</b>	Size <b>B</b>
		Dwg. No.: <b>M227N, M228N, M229N cust</b>		