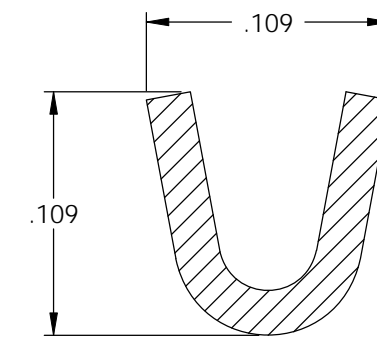
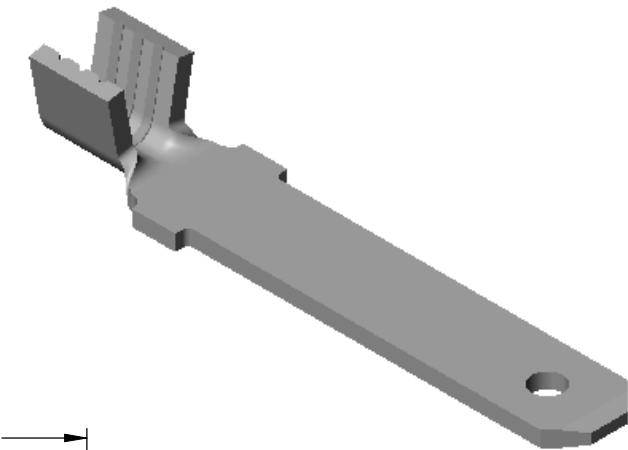
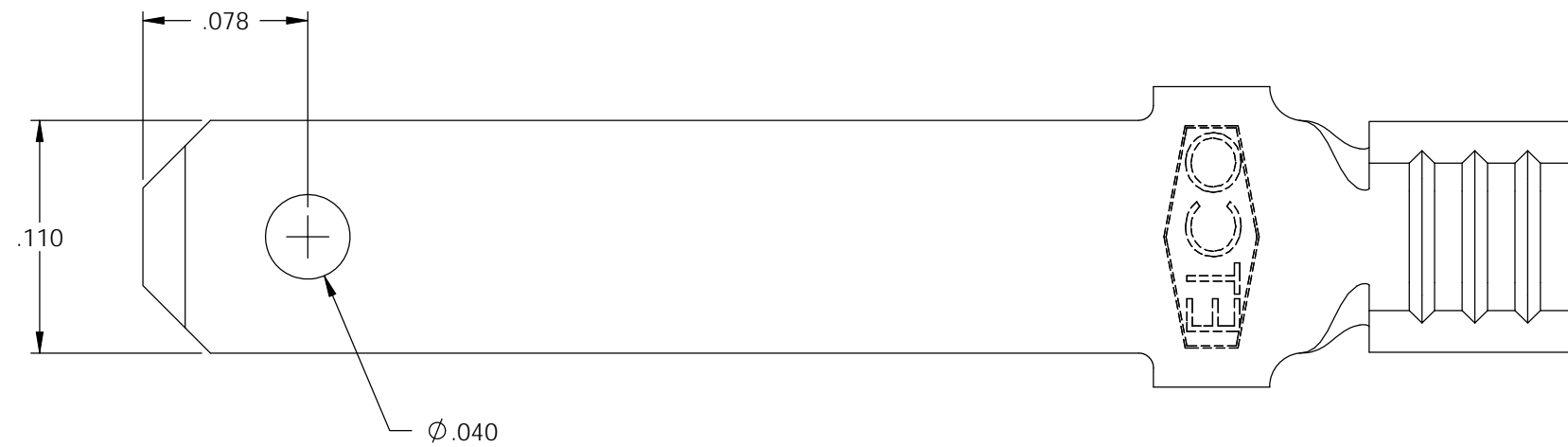


NOTES:

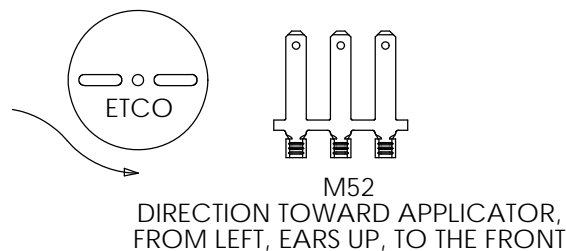
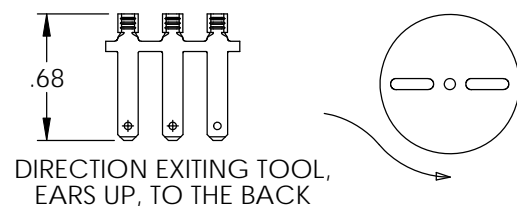
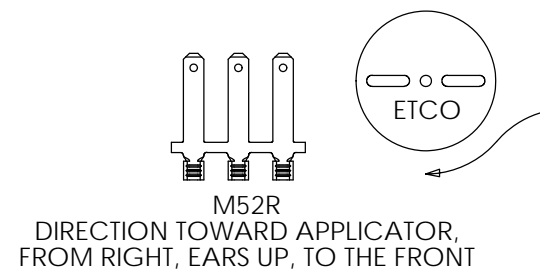
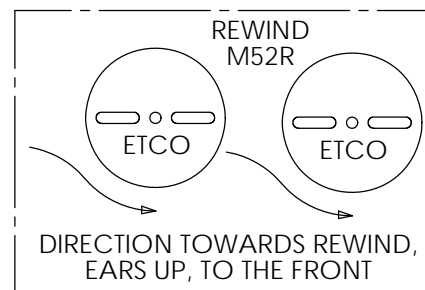
1. MATERIAL: .020 THICK, BRASS, #4 TEMPER (FULL HARD), PER ETCO METAL CODE 00369.
2. MATERIAL: .020 THICK, PRE-TINNED BRASS, #4 TEMPER, (FULL HARD), PER ETCO METAL CODE 001435.
3. PARTS MAY BE COATED WITH A LIGHT FILM OF LUBRICATION USED IN THE MANUFACTURING PROCESS.
4. WIRE RANGE: 22-18 AWG.

P/C	DESCRIPTION	REWIND	MAT'L	UL
07914	M52-HB	NO	NOTE 1	X
07938	M52-THB	NO	NOTE 2	X
07946	M52R-HB	YES	NOTE 1	X

Rev.	Description of Change/ SCN#	Date
1	REDRAWN ON SOLIDWORKS NO CHANGES SCJ ORG.ENG.DWG.DATE: 1-23-78	12-18-07



SECTION A-A
SCALE 12 : 1



UNCONTROLLED COPY

<p>THIRD ANGLE PROJECTION TOLERANCES UNLESS OTHERWISE SPECIFIED INCHES: .XX - ±.030 .XXX - ±.015 ANGLES: ±5°</p>	TOOL NO. 0138	Title: MALE DISCONNECT		
		DO NOT SCALE DWG.	Drawn By: S.JOHNSON	Date: 12-18-07
		Dwg. No.:	Scale: 12X	Size B
		M52 cust		