
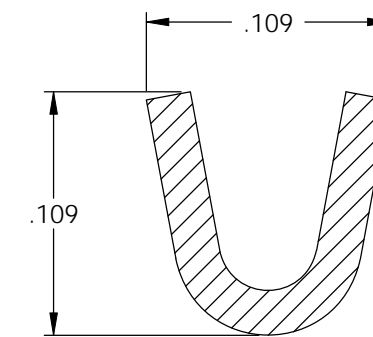
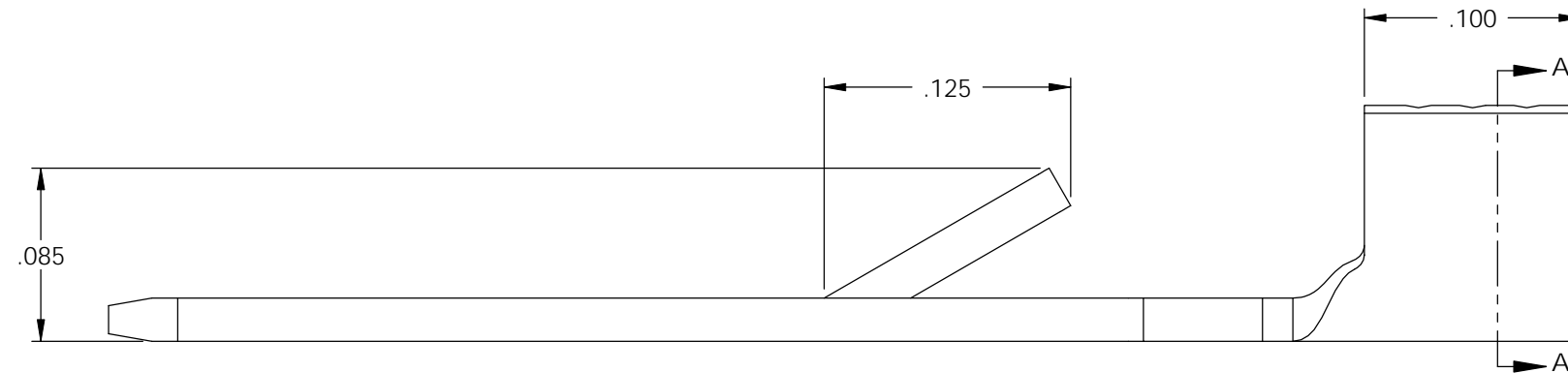
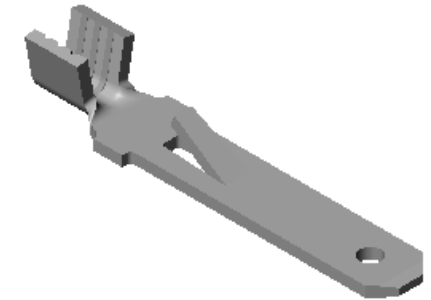
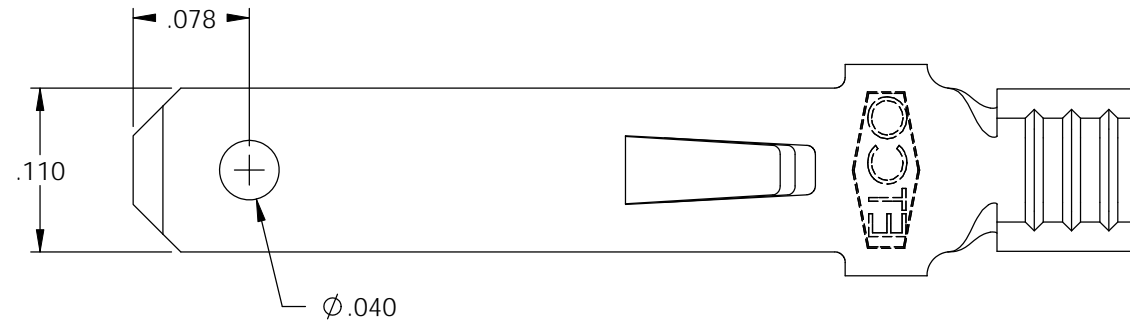


NOTES:

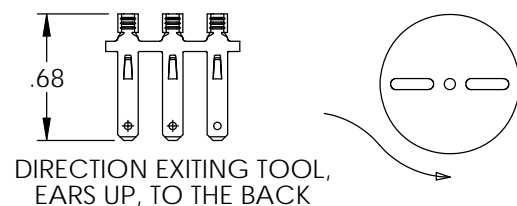
1. MATERIAL: .020 THICK, BRASS, #4 TEMPER (FULL HARD), PER ETCO METAL CODE 00369.
2. MATERIAL: .020 THICK, PRE-TINNED BRASS, #4 TEMPER, (FULL HARD), PER ETCO METAL CODE 001435.
3. PARTS MAY BE COATED WITH A LIGHT FILM OF LUBRICATION USED IN THE MANUFACTURING PROCESS.
4. WIRE RANGE: 22-18 AWG.

P/C	DESCRIPTION	MAT'L	
07925	M52L-HB	NOTE 1	X
07939	M52L-THB	NOTE 2	X

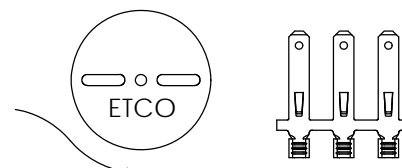
Rev.	Description of Change/ SCN#	Date
1	REDRAWN ON SOLIDWORKS NO CHANGES SCJ	7-31-08
2	COMPLETED P/C LIST SCJ	9-16-08



SECTION A-A
SCALE 12 : 1





DIRECTION EXITING TOOL,
EARS UP, TO THE BACK



DIRECTION TOWARD APPLICATOR,
FROM LEFT, EARS UP, TO THE FRONT

M52

UNCONTROLLED COPY

 THIRD ANGLE PROJECTION TOLERANCES UNLESS OTHERWISE SPECIFIED INCHES: .XX - ±.030 .XXX - ±.015 ANGLES: ±5°	TOOL NO. 0138	Title: MALE DISCONNECT		
		DO NOT SCALE DWG.	Drawn By: S.JOHNSON	Date: 7-31-08
		ETCO Incorporated Engineered Products 25 Bellows Street Warwick, RI 02888 Phone: (401) 467-2400 Fax: (401) 467-9230 www.ETCO.com	Chk'd/App'd By:	Scale: 12X Size B
		Dwg. No.: M52L cust		