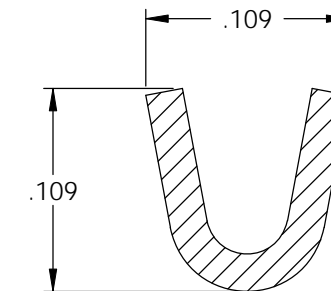
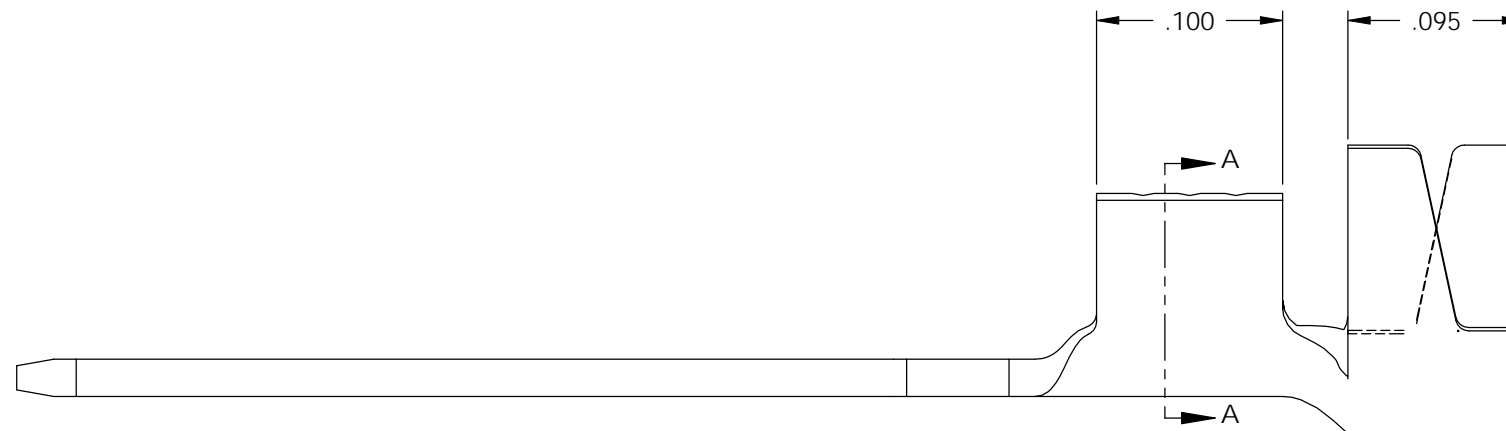
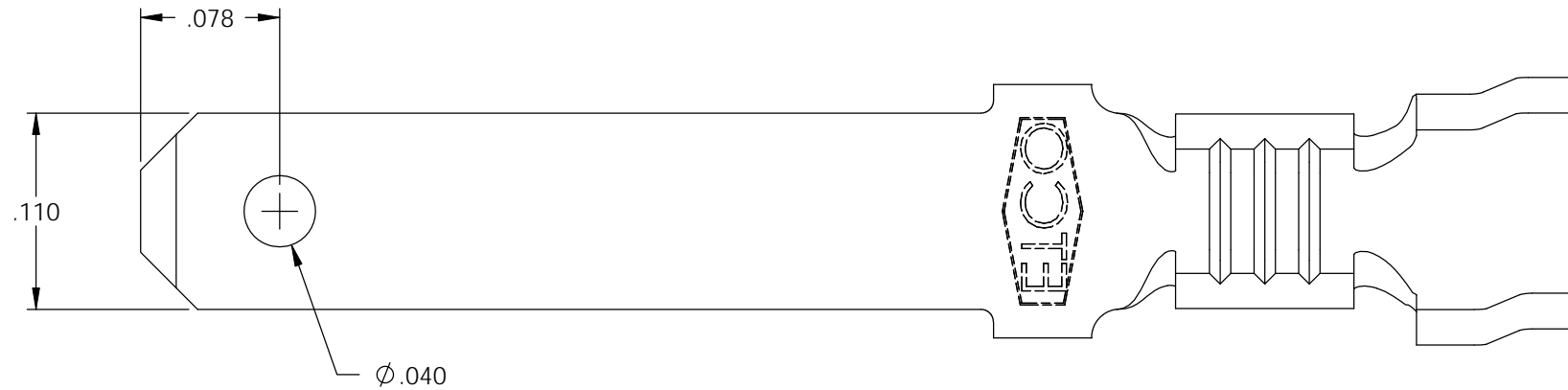
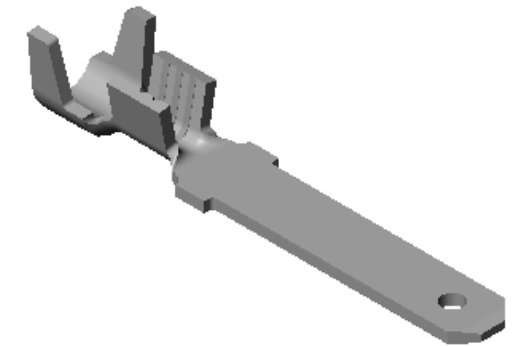


NOTES:

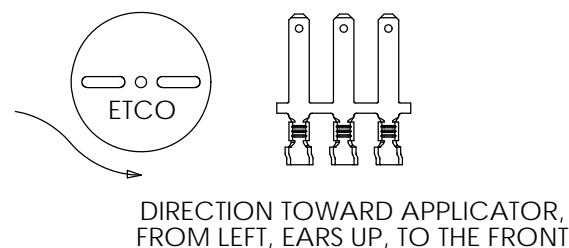
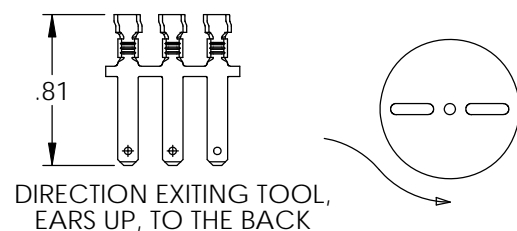
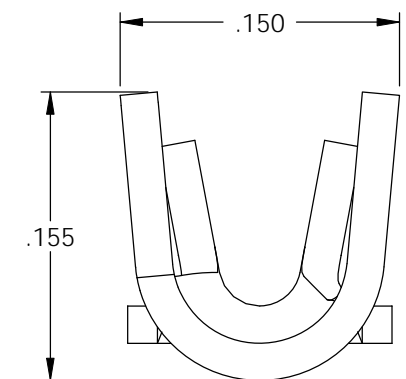
1. MATERIAL: .020 THICK, BRASS, #4 TEMPER (FULL HARD), PER ETCO METAL CODE 00403.
2. MATERIAL: .020 THICK, PRE-TINNED BRASS, #4 TEMPER, (FULL HARD), PER ETCO METAL CODE 001462.
3. PARTS MAY BE COATED WITH A LIGHT FILM OF LUBRICATION USED IN THE MANUFACTURING PROCESS.
4. WIRE RANGE: 22-18 AWG.
5. INSUL RANGE: \varnothing .055-.105

P/C	DESCRIPTION	MAT'L	UL
07919	M62-HB	NOTE 1	X
07924	M62-THB	NOTE 2	X

Rev.	Description of Change/ SCN#	Date
2	REDRAWN ON SOLIDWORKS NO CHANGES SCJ ORG.ENG.DWG.DATE: 10-5-71	12-18-07



SECTION A-A
SCALE 10 : 1



THIS PRINT IS THE PROPERTY OF ETCO INCORPORATED. NO PART OF THIS DESIGN MAY BE USED IN ANY WAY WITHOUT WRITTEN CONSENT FROM ETCO INCORPORATED.

UNCONTROLLED COPY

<p>THIRD ANGLE PROJECTION TOLERANCES UNLESS OTHERWISE SPECIFIED INCHES: .XX - \pm.030 .XXX - \pm.015 ANGLES: \pm5°</p>	<p>TOOL NO. 0138</p>	<p>Title: MALE DISCONNECT</p>		
		<p>DO NOT SCALE DWG.</p>	<p>Drawn By: S.JOHNSON</p>	<p>Date: 12-18-07</p>
<p>ETCO Incorporated Engineered Products 25 Bellows Street Warwick, RI 02888 Phone: (401) 467-2400 Fax: (401) 467-9230 www.ETCO.com</p>		<p>Chk'd/App'd By:</p>	<p>Scale: 10X</p>	<p>Size B</p>
		<p>Dwg. No.: M62 cust</p>		