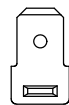
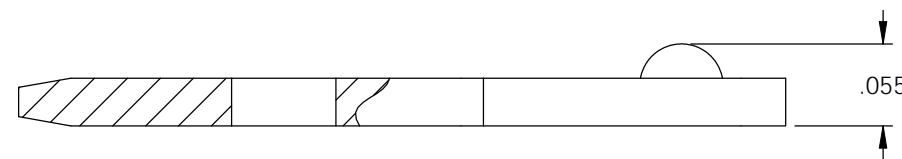
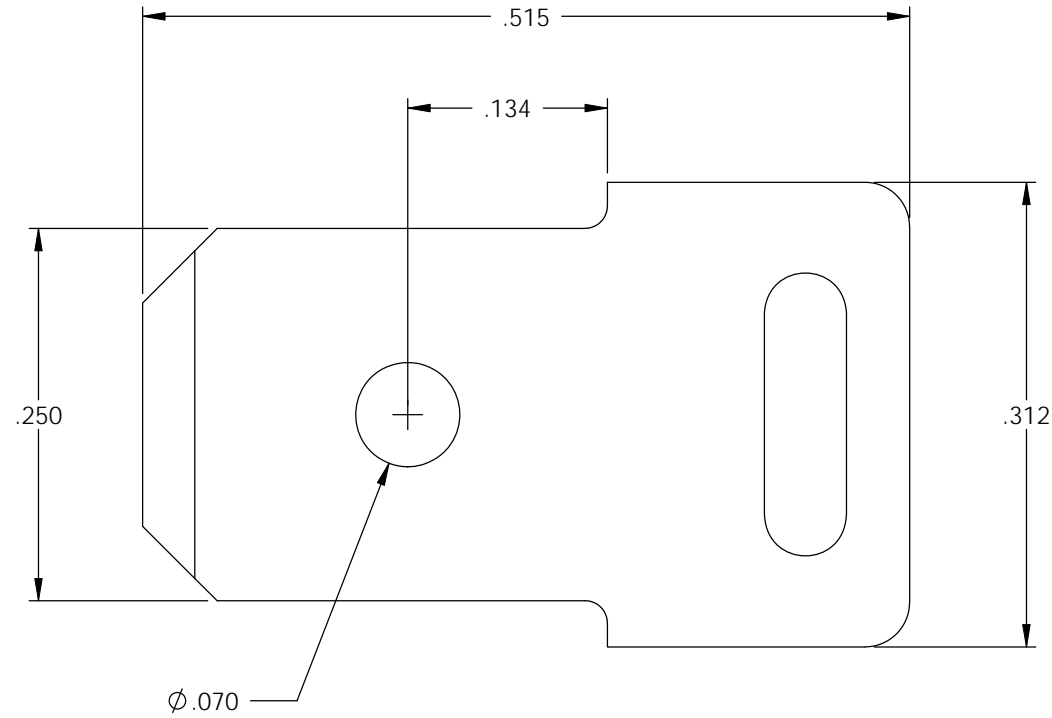


- NOTE:
 1.) MAT'L: .032 THK., #1008 C.R. STEEL,
 #2 TEMPER (HALF HARD), PRE-NICKEL
 PLATED: 100% NICKEL .000075 MIN.,
 PER ETCO METAL CODE NO. 03314.
 2.) PARTS MAY BE COATED WITH A LIGHT
 FILM OF LUBRICATION USED IN THE
 MANUFACTURING PROCESS.



P/C	DESCRIPTION	MAT'L
07953	M6W-070-X-NPS	NOTE 1

Rev.	Description of Change/ SCN#	Date
1	REDRAWN ON SOLIDWORKS NO CHANGES SCJ ORG.ENG.DWG.DATE: 1-10-94	8-24-06



DIRECTION EXITING TOOL,
 BUMP DOWN TO THE FRONT,
 PARTS PRODUCED IN LOOSE PIECE FORM

UNCONTROLLED COPY

 THIRD ANGLE PROJECTION TOLERANCES UNLESS OTHERWISE SPECIFIED INCHES: .XX - ±.030 .XXX - ±.015 ANGLES: ±5°	TOOL NO. 0136	Title: .032 X .250 WELDING MALE		
		DO NOT SCALE DWG.	Drawn By: S.JOHNSON	Date: 8-25-06
ETCO Incorporated Engineered Products 25 Bellows Street Warwick, RI 02888 Phone: (401) 467-2400 Fax: (401) 467-9230 www.ETCO.com		Chk'd/App'd By:	Scale: 8X	Size: B
		Dwg. No.: M6W-070-X cust		