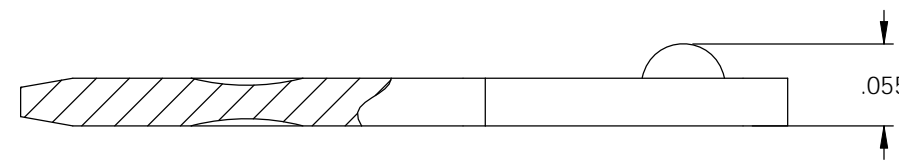
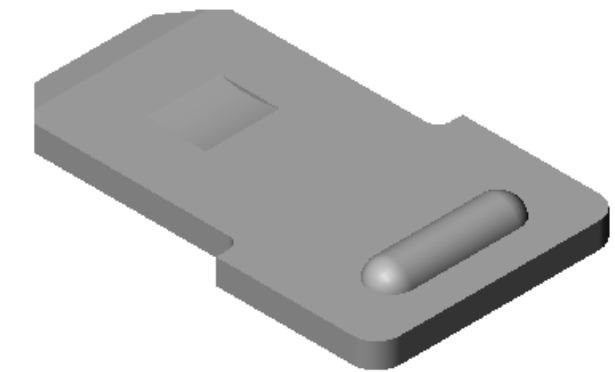
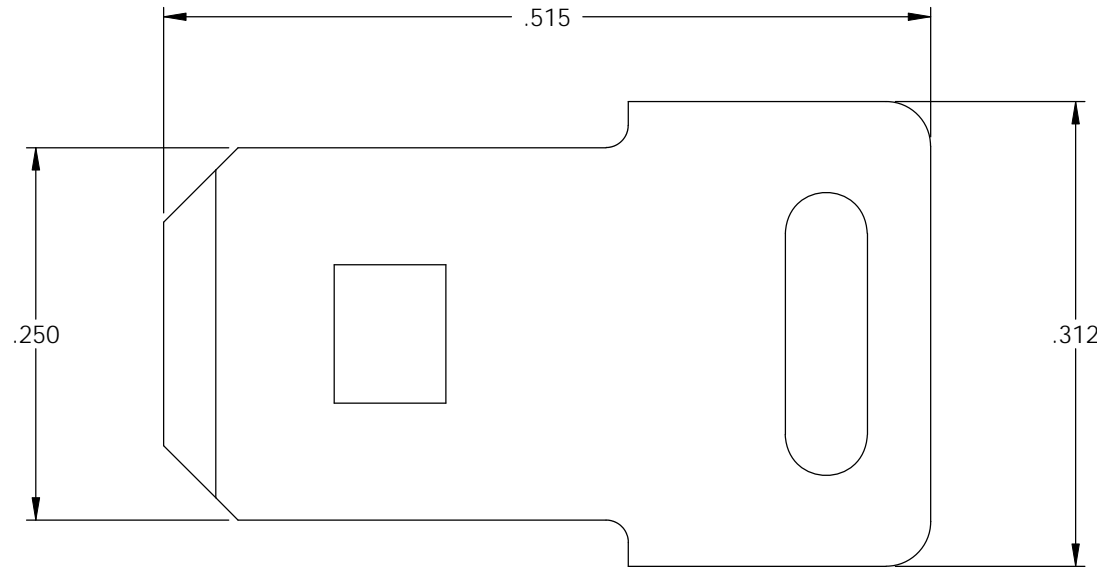


NOTE:



- 1.) MAT'L: .032 THK., #1008 C.R. STEEL, #2 TEMPER (HALF HARD), PRE-NICKEL PLATED, PER ETCO METAL CODE NO. 03314.
- 2.) MAT'L: .032 THK., #1008 C.R. STEEL, #4 TEMPER (SKIN ROLLED), POST-NICKEL PLATED, PER ETCO METAL CODE NO. 02957.
- 3.) PARTS MAY BE COATED WITH A LIGHT FILM OF LUBRICATION USED IN THE MANUFACTURING PROCESS.

P/C	DESCRIPTION	MAT'L
07887	M6W-X-NPS	NOTE 1
07901	M6W-X-CRS-NPAF	NOTE 2

Rev.	Description of Change/ SCN#	Date
4	ACTIVATED P/C 07887 SCJ ORG.ENG.DWG.DATE: 1-5-93	9-30-02



UNCONTROLLED COPY

 THIRD ANGLE PROJECTION TOLERANCES UNLESS OTHERWISE SPECIFIED INCHES: .XX - ±.030 .XXX - ±.015 ANGLES: ±5°	TOOL NO. 0136	Title: .032 X .250 WELDING MALE		
	 ETCO	DO NOT SCALE DWG.	Drawn By: S.JOHNSON	Date: 8-25-06
		ETCO Incorporated Engineered Products 25 Bellows Street Warwick, RI 02888 Phone: (401) 467-2400 Fax: (401) 467-9230 www.ETCO.com	Chk'd/App'd By:	Scale: 8X Size B
		Dwg. No.: M6W-X cust		