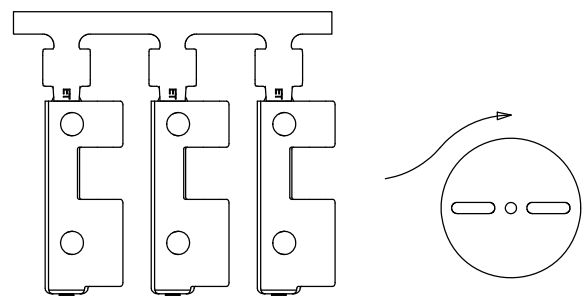
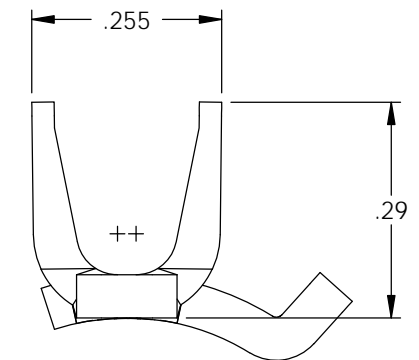
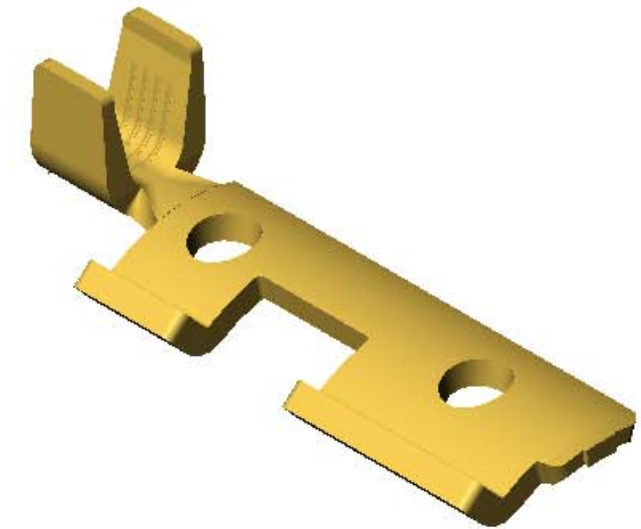
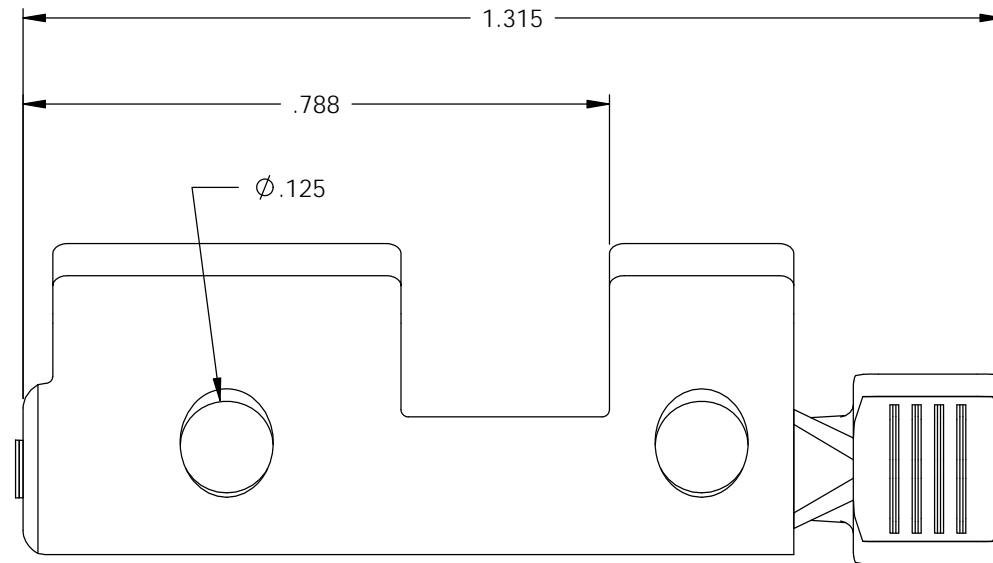
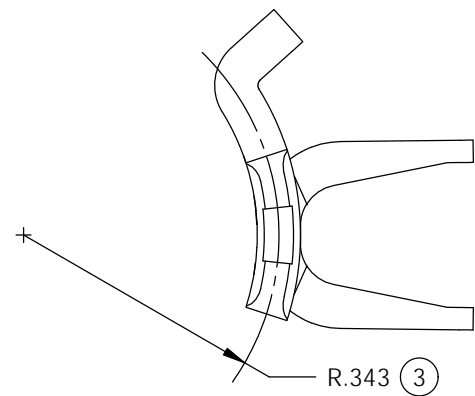


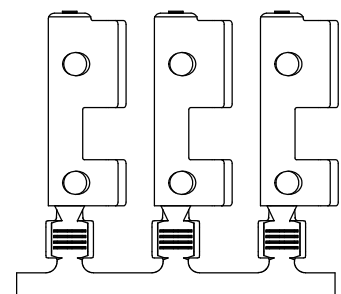
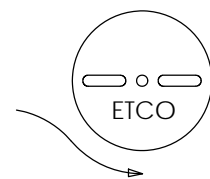
- NOTE:
- 1.) MAT'L: .058 THK., BRASS, #1 TEMPER (QUARTER HARD), ANNEALED TO TEMPER, PER ETCO METAL CODE NO. 07025.
 - 2.) PARTS MAY BE COATED WITH A LIGHT FILM OF LUBRICATION USED IN THE MANUFACTURING PROCESS.
 - 3.) WIRE RANGE: 10-16 AWG.
 - 4.) NEMA L6-15, 250 VOLTS-15 AMPS.

P/C	DESCRIPTION (4)	MAT'L
82083	MALETLGRD-V3-D-HB	NOTE 1

Rev.	Description of Change/ SCN#	Date
1	TRANSFER FROM CP TO EP	1-18-05
2	SCN# 102830 SCJ	1-24-05
3	ECR# 533 JMR	12-07-10
4	ECR# 816 SCJ	11-3-11
5	ECR# 2313 SCJ	6/24/13



DIRECTION EXITING TOOL,
EARS DOWN, TO THE BACK



DIRECTION TOWARD APPLICATOR,
EARS UP, TO THE FRONT

UNCONTROLLED COPY

<p>THIRD ANGLE PROJECTION</p>	<p>TOOL NO. 0847</p>	<p>Title: MALE TWIST GROUND: L6-15, 250 VOLTS-15 AMPS</p>				
		<p>DO NOT SCALE DWG.</p>	<p>Drawn By: S.JOHNSON</p>	<p>Date: 1-18-05</p>		
<p>TOLERANCES UNLESS OTHERWISE SPECIFIED</p> <p>INCHES: .XX - ±.030 .XXX - ±.015</p> <p>ANGLES - ±5°</p>	<p>ETCO</p>	<p>ETCO Incorporated Engineered Products 25 Bellows Street Warwick, R.I. 02888 Phone: (401)467-2400 FAX: (401)467-9230 www.ETCO.com</p>		<p>Chk'd/App'd By:</p>	<p>Scale: 4:1</p>	<p>Size B</p>
		<p>Dwg. No.: MALETLGRD-V3</p>				