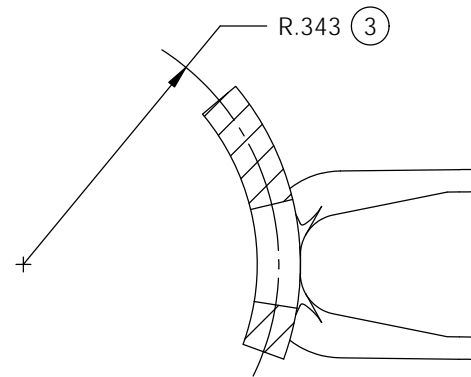


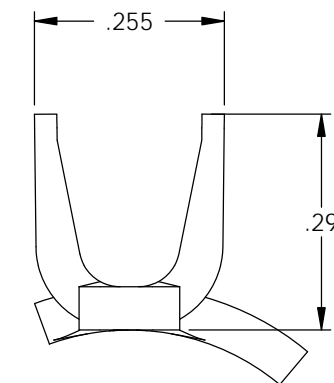
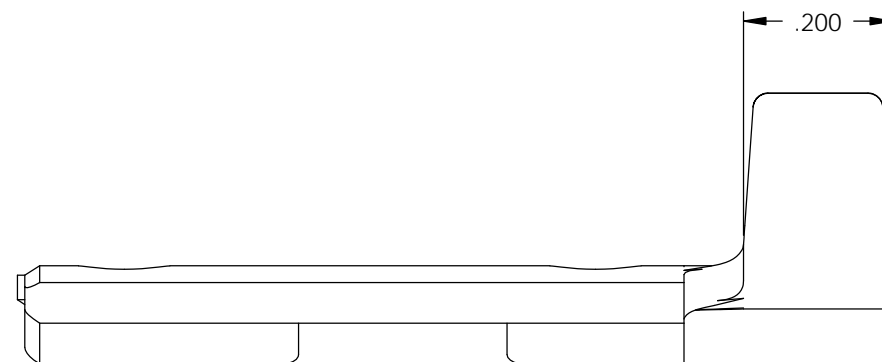
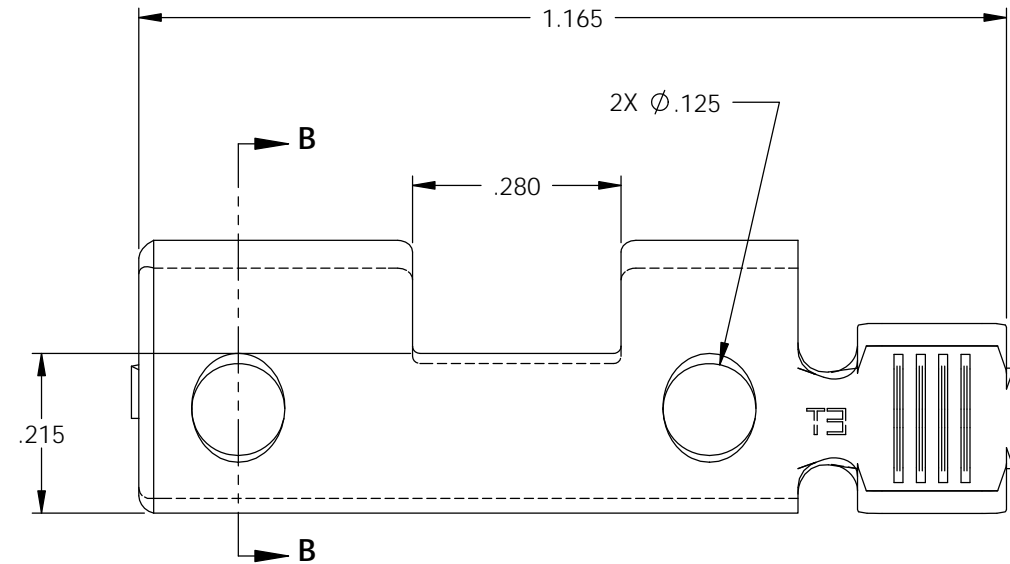
- NOTE:
- 1.) MAT'L: .058 THK., BRASS, #1 TEMPER (QUARTER HARD), ANNEALED TO TEMPER, PER ETCO METAL CODE NO. 01076.
 - 2.) PARTS MAY BE COATED WITH A LIGHT FILM OF LUBRICATION USED IN THE MANUFACTURING PROCESS.
 - 3.) WIRE RANGE: 10-16 AWG.
 - 4.) NEMA L5-15, 125 VOLTS-15 AMPS.
 - 5.) NEMA L6-15, 250 VOLTS-15 AMPS.
 - 6.) NEMA L7-15, 277 VOLTS-15 AMPS.

P/C	DESCRIPTION	MAT'L
82059	MALETLLINE-HB-X	NOTE 1

Rev.	Description of Change/ SCN#	Date
-	Initial Release ECR# 2300 SCJ	6/17/13
1	ECR# 2449 SCJ	9/05/13



SECTION B-B
SCALE 4 : 1



UNCONTROLLED COPY

<p>THIRD ANGLE PROJECTION TOLERANCES UNLESS OTHERWISE SPECIFIED INCHES: .XX - ±.030 .XXX - ±.015 ANGLES: ±5°</p>	<p>TOOL NO. 0847</p>	<p>Title: COMMON BLADE TWIST: 15 AMPS</p>		
	<p>ETCO</p>	<p>DO NOT SCALE DWG.</p>	<p>Drawn By: S.JOHNSON</p>	<p>Date: 6/17/13</p>
<p>ETCO Incorporated Engineered Products 25 Bellows Street Warwick, RI 02888 Phone: (401) 467-2400 Fax: (401) 467-9230 www.ETCO.com</p>		<p>Chk'd/App'd By:</p>	<p>Scale: 4X</p>	<p>Size B</p>
		<p>Dwg. No.: MALETLLINE-X cust</p>		