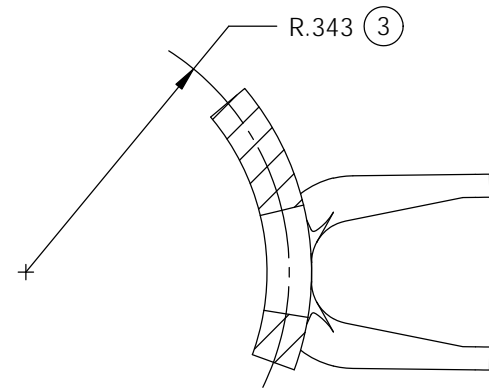
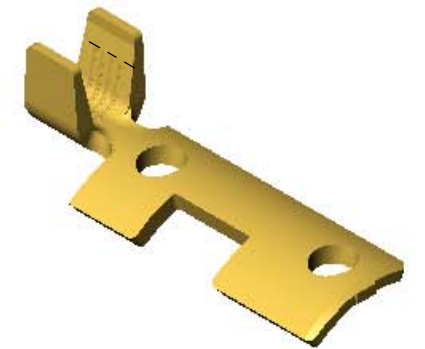


NOTE:

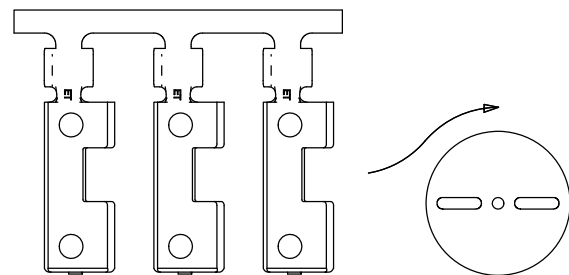
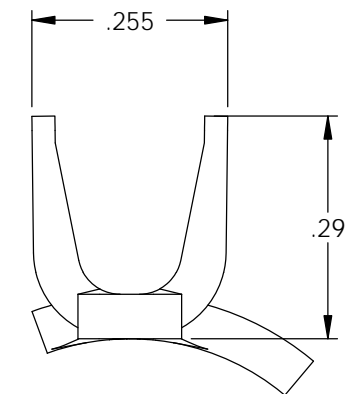
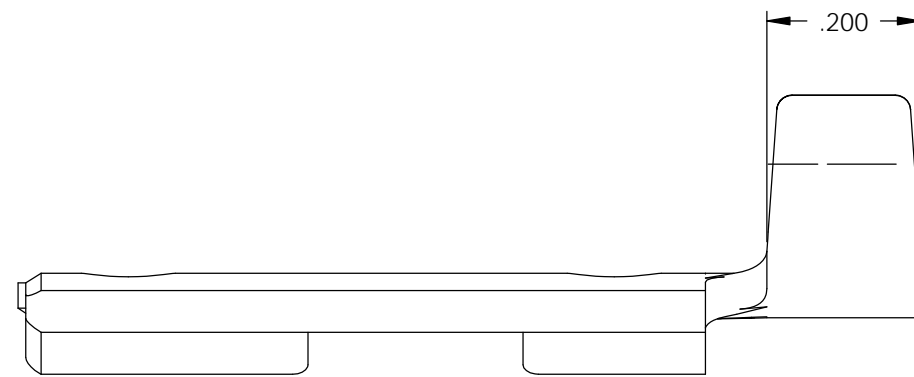
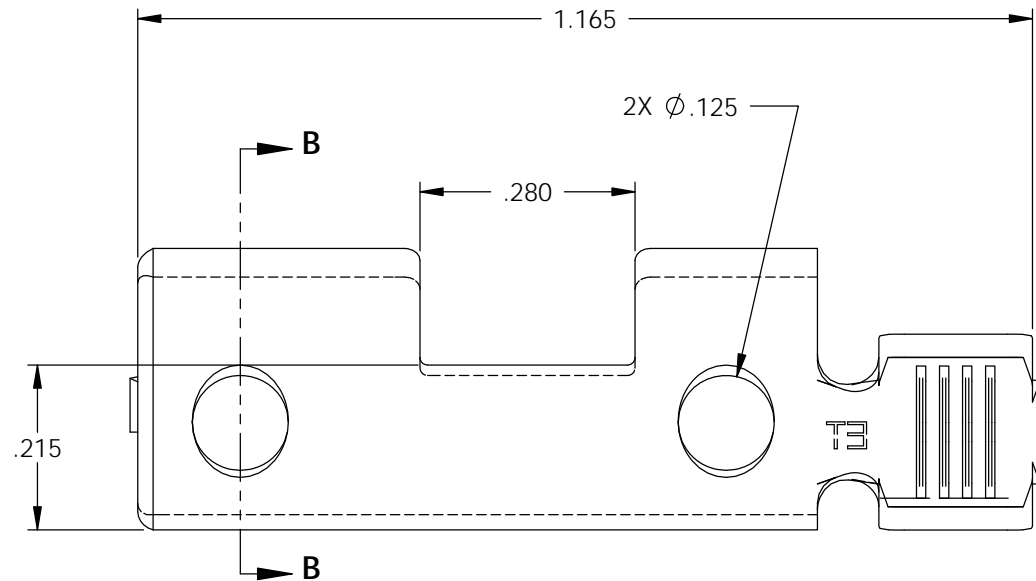
- 1.) MAT'L: .058 THK., BRASS,
#1 TEMPER (QUARTER HARD), ANNEALED TO TEMPER,
PER ETCO METAL CODE NO. 01076.
- 2.) PARTS MAY BE COATED WITH A LIGHT
FILM OF LUBRICATION USED IN THE
MANUFACTURING PROCESS.
- 3.) WIRE RANGE: 10-16 AWG.
- 4.) NEMA L5-15, 125 VOLTS-15 AMPS.
- 5.) NEMA L6-15, 250 VOLTS-15 AMPS.
- 6.) NEMA L7-15, 277 VOLTS-15 AMPS.

P/C	DESCRIPTION (4)	MAT'L
82081	MALETLLINE-D-HB	NOTE 1

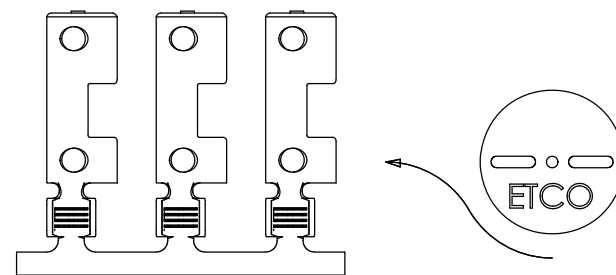
Rev.	Description of Change/ SCN#	Date
1	TRANSFER FROM CP TO EP	1-14-05
2	SCN# 102830 SCJ	1-24-05
3	ECR#533 JMR	12-07-10
4	ECR# 816 SCJ	11-3-11
5	ECR# 2313 SCJ	6/24/13
5	ECR# 4973 SCJ	2/13/18



SECTION B-B
SCALE 4 : 1



DIRECTION EXITING TOOL,
EARS DOWN, TO THE BACK



DIRECTION TOWARDS APPLICATOR,
EARS UP, TO THE FRONT, FROM RIGHT (5)

UNCONTROLLED COPY

<p>THIRD ANGLE PROJECTION TOLERANCES UNLESS OTHERWISE SPECIFIED INCHES: .XX - ±.030 .XXX - ±.015 ANGLES: ±5°</p>	<p>TOOL NO. 0847</p>	<p>Title: COMMON BLADE TWIST: 15 AMPS</p>		
		<p>DO NOT SCALE DWG.</p>	<p>Drawn By: S.JOHNSON</p>	<p>Date: 1/14/05</p>
<p>ETCO Incorporated Engineered Products 25 Bellows Street Warwick, RI 02888 Phone: (401) 467-2400 Fax: (401) 467-9230 www.ETCO.com</p>		<p>Chk'd/App'd By:</p>	<p>Scale: 4X</p>	<p>Size B</p>
		<p>Dwg. No.: MALETLLINE cust</p>		