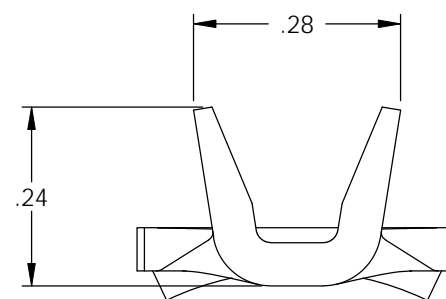
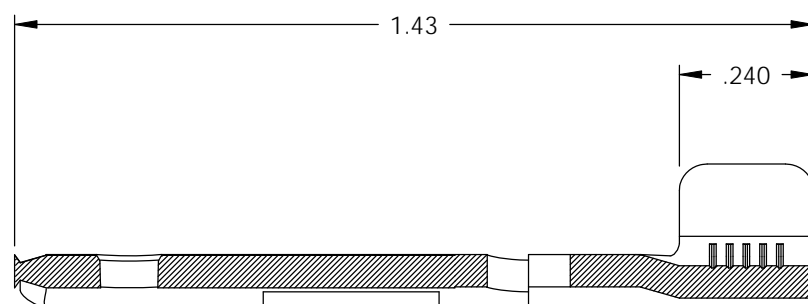
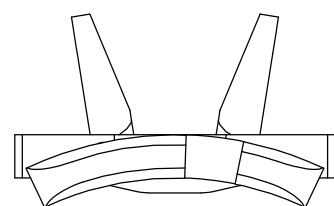
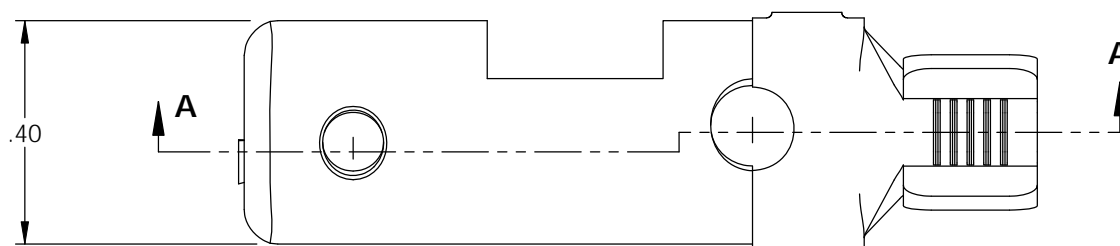
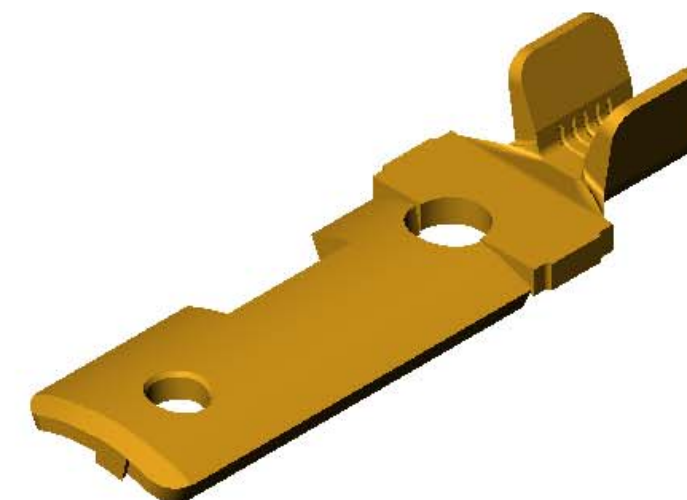


NOTES:

1. MATERIAL: .058 THICK C26000 BRASS; 1/4 HARD, ANNEALED TO TEMPER, PER ETCO METAL CODE 07028.
2. PART CODE 82062 TO BE POST BRIGHT TIN PLATED: .00010-.00030 THICK.
3. PARTS MAY BE COATED WITH A LIGHT FILM OF LUBRICATION USED IN THE MANUFACTURING PROCESS.
4. WIRE RANGE: #10-#16 AWG.
5. NEMA L5-20, 125 VOLTS-20 AMPS.

P/C	DESCRIPTION	PLATING
82052	MALETLWIDE-HB	NONE
82062	MALETLWIDE-HB-TAF	NOTE 2

Rev.	Description of Change/ SCN#	Date
1	TRANSFER FROM CP TO EP	4-22-08



SECTION A-A
SCALE 3 : 1

UNCONTROLLED COPY

<p>THIRD ANGLE PROJECTION TOLERANCES UNLESS OTHERWISE SPECIFIED INCHES: .XX - ±.030 .XXX - ±.015 ANGLES: ±5°</p>	<p>TOOL NO. 0837</p>	<p>Title: MALE TWIST LOCK TERMINAL-WIDE: L5-20, 125 VOLTS-20 AMPS.</p>		
	<p>ETCO</p>	<p>DO NOT SCALE DWG.</p>	<p>Drawn By: S.JOHNSON</p>	<p>Date: 4-22-08</p>
<p>ETCO Incorporated Engineered Products 25 Bellows Street Warwick, RI 02888 Phone: (401) 467-2400 Fax: (401) 467-9230 www.ETCO.com</p>		<p>Chk'd/App'd By:</p>	<p>Scale: 3X</p>	<p>Size B</p>
<p>Dwg. No.: MALETLWIDE loose piece cust</p>				