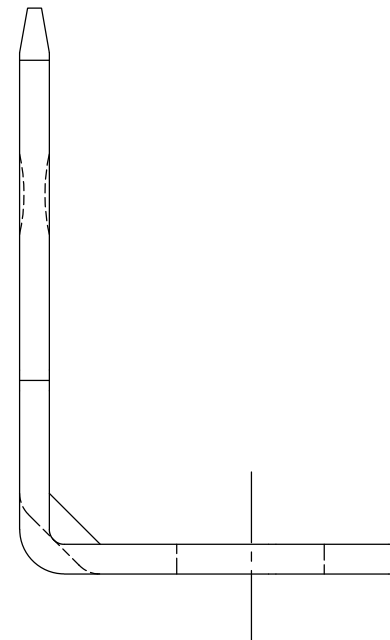
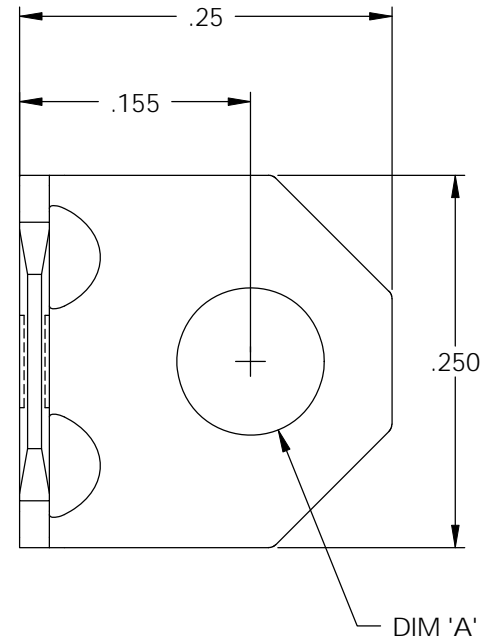



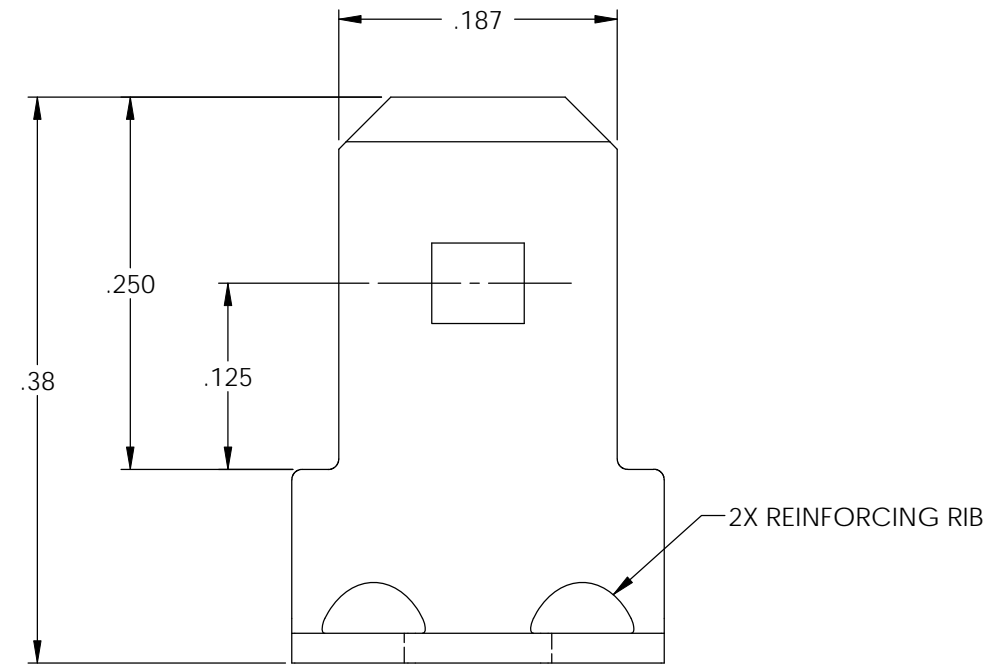
NOTES:

- MAT'L: .020 THICK BRASS,  
#2 TEMPER (1/2 HARD)  
PER ETCO METAL CODE 00310.
- POST-PLATED: DULL TIN .000200 MIN THK.



P/C	DESCRIPTION	DIM 'A'	PLATING	
08311	MS40-1-HB	Ø.099	NONE	
08322	MS41-HB	Ø.126	NONE	X
08323	MS41-HB-TAF	Ø.126	NOTE 2	X
08330	MS41-130-HB	Ø.130	NONE	
08331	MS41-130-HB-TAF	Ø.130	NOTE 2	

Rev.	Description of Change/ SCN#	Date
1	SCN# 140172 SCJ ORG.ENG.DWG.DATE: 6-11-87	5-18-07
2	ADDED P/Cs SCN#140162 SCJ	8-1-07
3	SCN# 140274 SCJ	10-24-07



# UNCONTROLLED COPY



THIRD ANGLE PROJECTION  
TOLERANCES UNLESS OTHERWISE SPECIFIED

INCHES: .XX - ±.030  
.XXX - ±.015  
ANGLES: ±5°

TOOL NO.  
**0156**

Title: .020 X .187 STATIONARY MALE DISCONNECT

DO NOT SCALE DWG.

Drawn By: S.JOHNSON

Date: 10-8-91



ETCO Incorporated  
Engineered Products  
25 Bellows Street  
Warwick, RI 02888  
Phone: (401) 467-2400  
Fax: (401) 467-9230  
www.ETCO.com

Chk'd/App'd By:

Scale:  
8X

Size  
**B**

Dwg. No.:  
MS40-1, MS41, & MS41-130 cust



DIRECTION EXITING TOOL,  
BENT UP, MALE TAB TO THE FRONT.  
PARTS ARE PRODUCED IN LOOSE PIECE FORM.