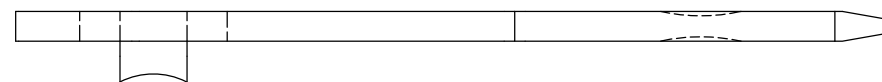
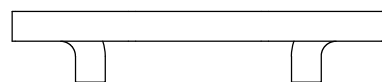
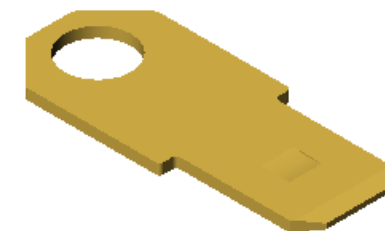
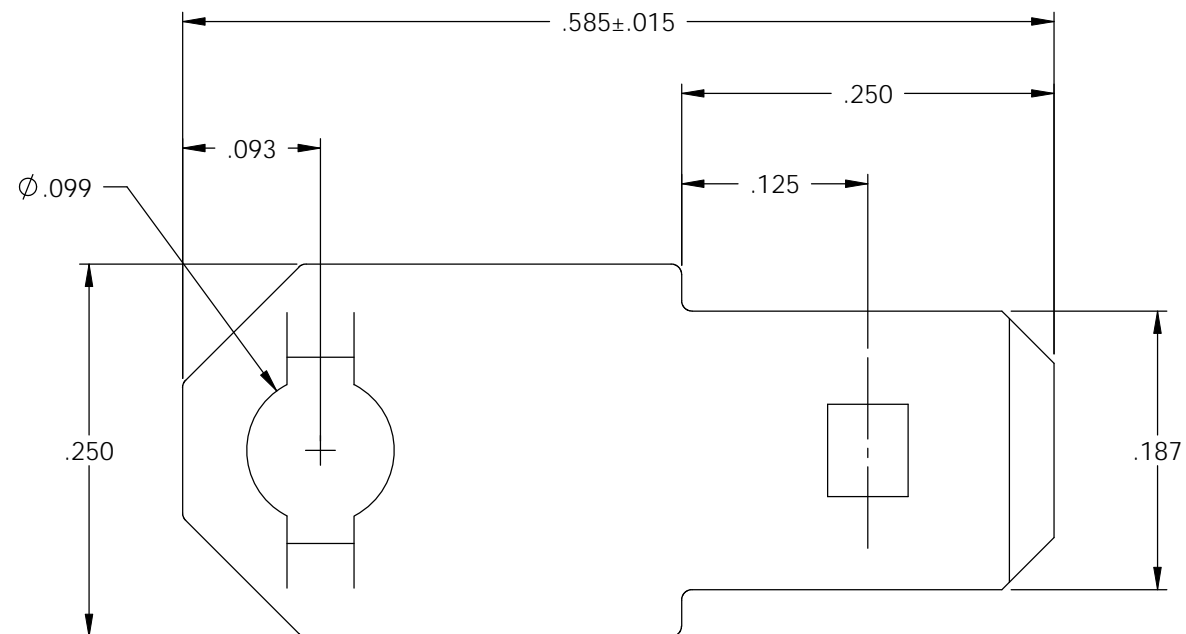


NOTES:
 1. MATERIAL: .020 THICK BRASS,
 #2 TEMPER (1/2 HARD)
 PER ETCO METAL CODE 00310.

P/C	DESCRIPTION
08313	MS40-FLAT-HB

Rev.	Description of Change/ SCN#	Date
1	SCN# 140162 SCJ ORG.ENG.DWG.DATE: 2-22-93	5-18-07



DIRECTION EXITING TOOL,
 MALE TAB TO THE FRONT.
 PARTS ARE PRODUCED IN LOOSE PIECE FORM.

UNCONTROLLED COPY

 THIRD ANGLE PROJECTION TOLERANCES UNLESS OTHERWISE SPECIFIED INCHES: .XX - ±.030 .XXX - ±.015 ANGLES: ±5°	TOOL NO. 0156	Title: .020 X .187 STATIONARY MALE DISCONNECT		
		DO NOT SCALE DWG.	Drawn By: S.JOHNSON	Date: 2-22-93
ETCO Incorporated Engineered Products 25 Bellows Street Warwick, RI 02888 Phone: (401) 467-2400 Fax: (401) 467-9230 www.ETCO.com		Chk'd/App'd By:	Scale: 8X	Size B
		Dwg. No.: MS40-FLAT cust		