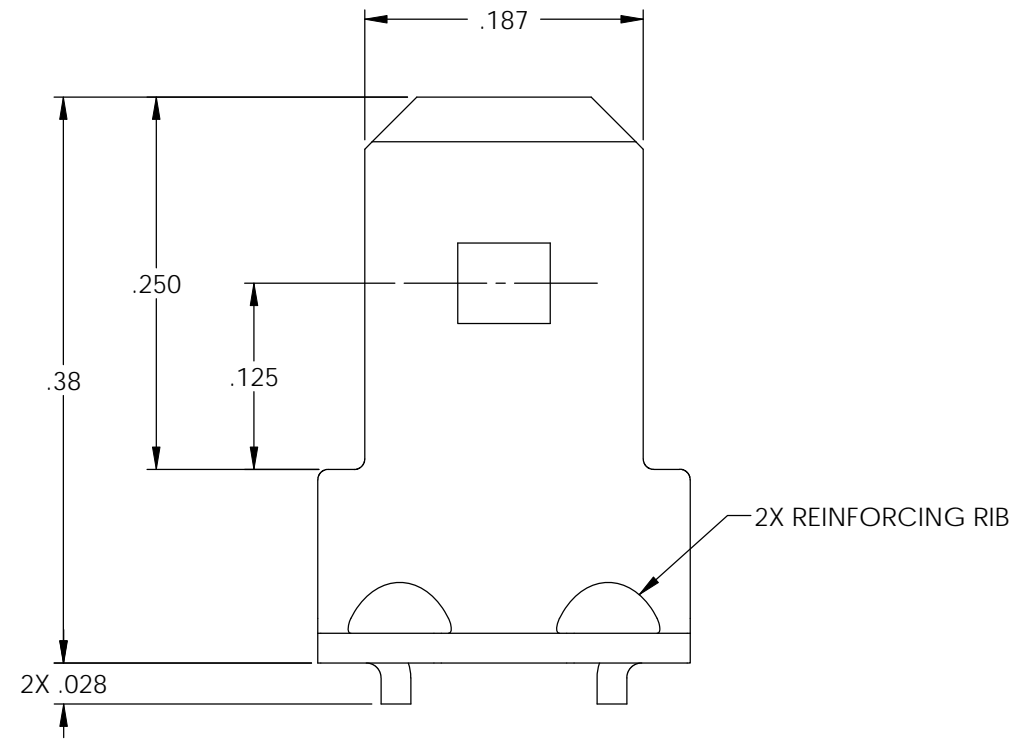
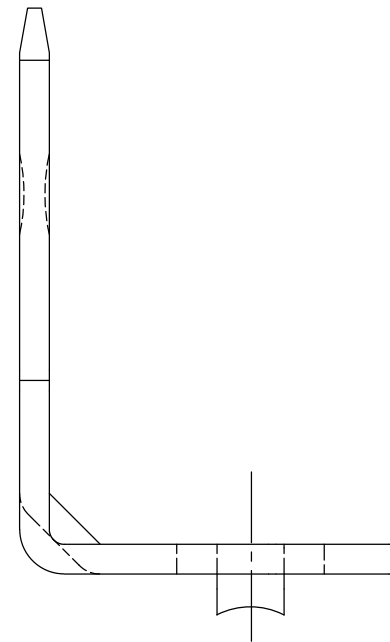
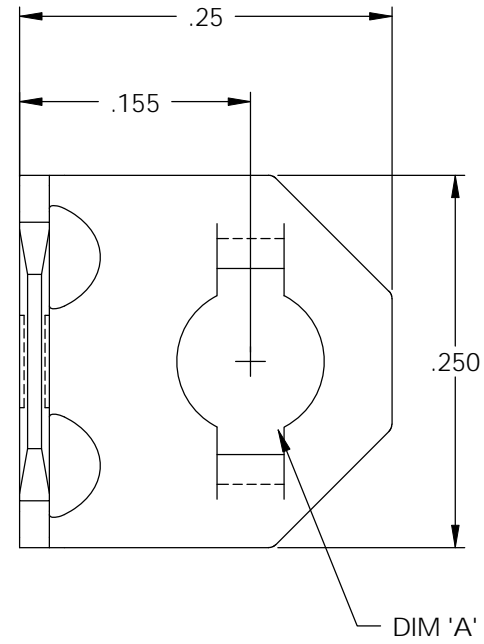



- NOTES:  
 1. MAT'L: .020 THICK BRASS,  
 #2 TEMPER (1/2 HARD)  
 PER ETCO METAL CODE 00310.  
 2. POST-PLATED: DULL TIN .000200 MIN THK.



P/C	DESCRIPTION	PLATING	
08315	MS40-HB	NONE	X
08316	MS40-HB-TAF	NOTE 2	X

Rev.	Description of Change/ SCN#	Date
1	SCN# 140172 SCJ ORG.ENG.DWG.DATE: 2-25-93	5-18-07
2	ADDED P/Cs SCN#140162 SCJ	8-1-07
3	SCN# 140274 SCJ	10-24-07



## UNCONTROLLED COPY

  
 DIRECTION EXITING TOOL,  
 TABS FORMED DOWN, MALE TAB FLAT TO THE FRONT.  
 PARTS ARE PRODUCED IN LOOSE PIECE FORM.

THIRD ANGLE PROJECTION  
 TOLERANCES UNLESS OTHERWISE SPECIFIED  
 INCHES: .XX - ±.030  
 .XXX - ±.015  
 ANGLES: ±5°

TOOL NO.  
**0156**

Title: .020 X .187 STATIONARY MALE DISCONNECT

DO NOT SCALE DWG.

Drawn By: S.JOHNSON

Date: 2-24-93



ETCO Incorporated  
 Engineered Products  
 25 Bellows Street  
 Warwick, RI 02888  
 Phone: (401) 467-2400  
 Fax: (401) 467-9230  
 www.ETCO.com

Chk'd/App'd By:

Scale:  
 8X

Size  
 B

Dwg. No.:

MS40 cust