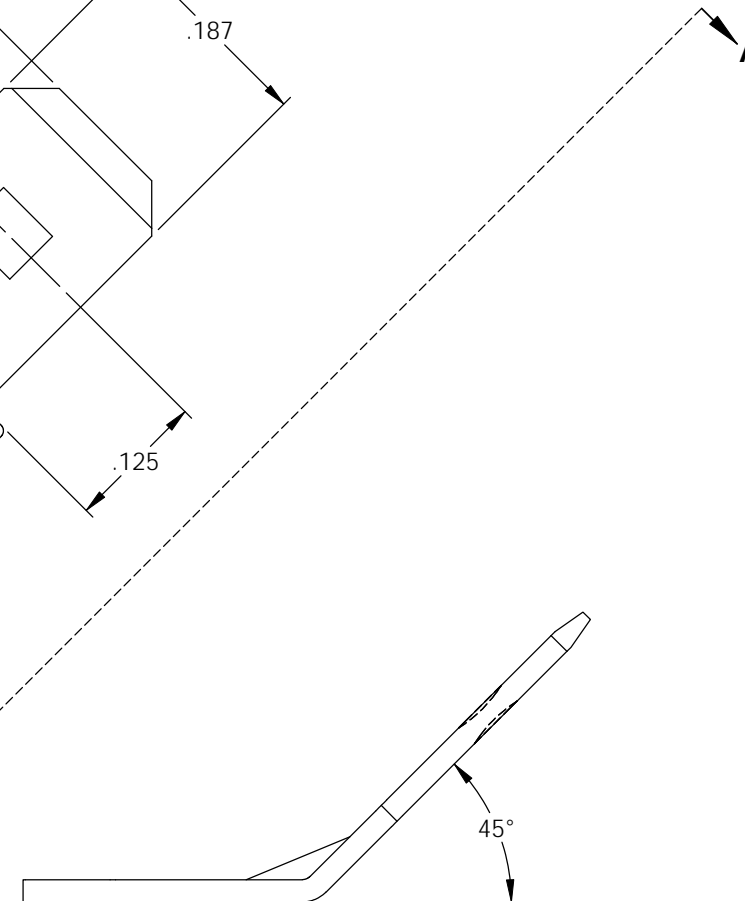
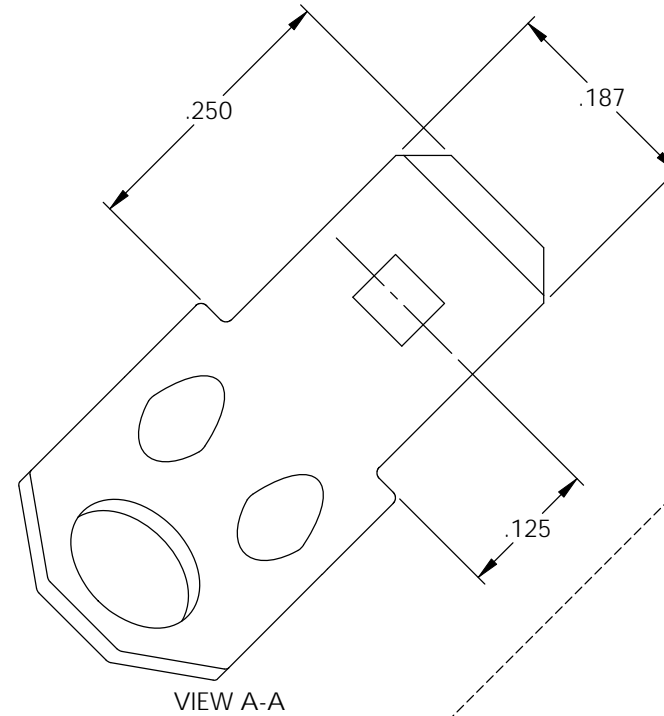
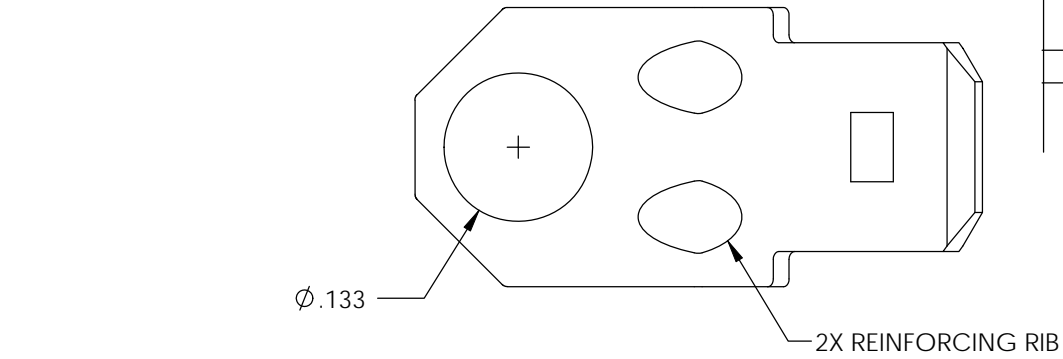
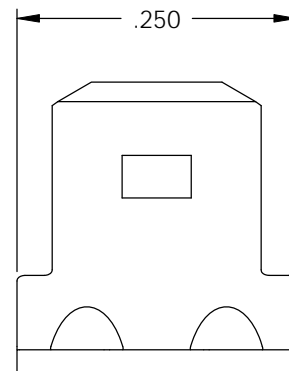


- NOTES:
 1. MAT'L: .020 THICK BRASS,
 #2 TEMPER (1/2 HARD)
 PER ETCO METAL CODE 00310.
 2. POST-PLATED: DULL TIN .000200 MIN THK.

P/C	DESCRIPTION	PLATING
08310	MS41-A-HB-TAF	NOTE 2
08317	MS41-A-HB	NONE

Rev.	Description of Change/ SCN#	Date
1	SCN# 140172 SCJ ORG.ENG.DWG.DATE: 10-8-91	5-17-07
2	ADDED P/Cs SCN#140162 SCJ	8-1-07



A



DIRECTION EXITING TOOL,
 TABS DOWN, MALE TO THE FRONT.
 PARTS PRODUCED IN LOOSE PIECE FORM.

UNCONTROLLED COPY

<p>THIRD ANGLE PROJECTION TOLERANCES UNLESS OTHERWISE SPECIFIED INCHES: .XX - ±.030 .XXX - ±.015 ANGLES: ±5°</p>	TOOL NO. 0156	Title: .187 X .250 STATIONARY MALE DISCONNECT	
		DO NOT SCALE DWG.	Drawn By: S.JOHNSON Date: 10-8-91
ETCO Incorporated Engineered Products 25 Bellows Street Warwick, RI 02888 Phone: (401) 467-2400 Fax: (401) 467-9230 www.ETCO.com		Chk'd/App'd By:	Scale: 6X Size: B
Dwg. No.:			MS41-A cust