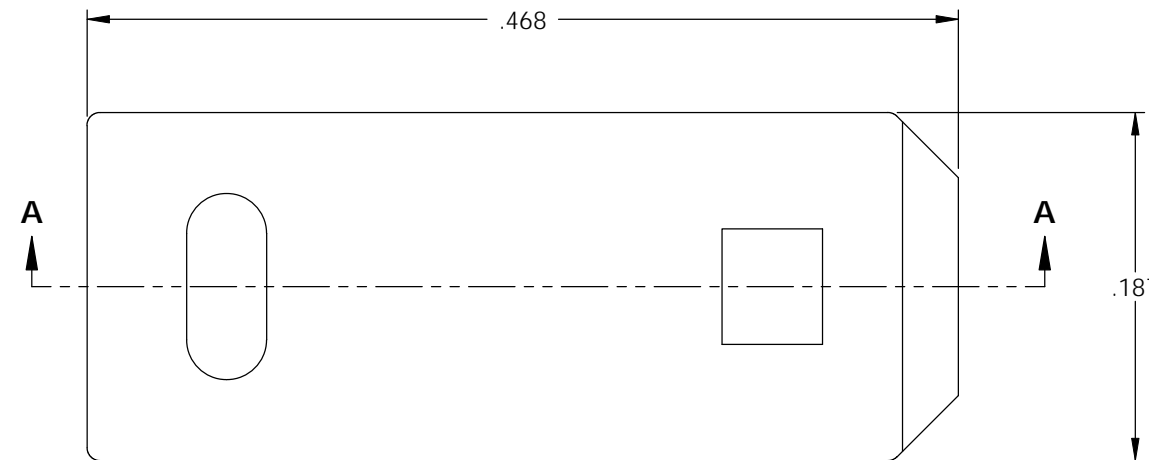
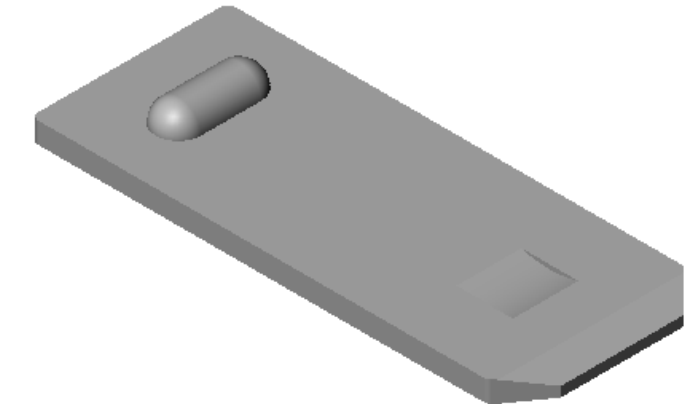
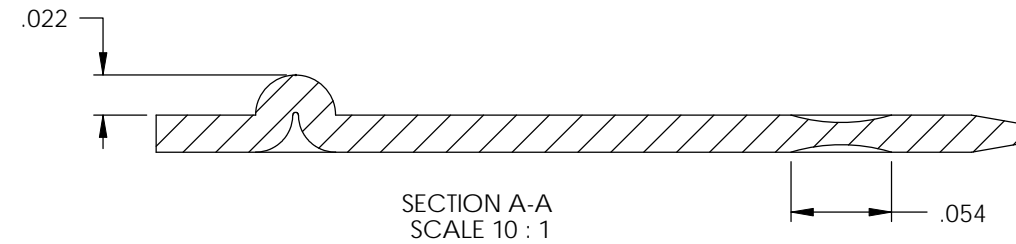



- NOTE:
- 1.) MAT'L: .020 THK., PRE-NICKEL PLATED STEEL, #3 TEMPER (QUARTER HARD), PER ETCO METAL CODE NO. 03200.
 - 2.) MAT'L: .020 THK., PRE-TINNED STEEL, #2 TEMPER (HALF HARD), PER ETCO METAL CODE NO. 03022.
 - 3.) MAT'L: .020 THK., COLD ROLLED STEEL, #2 TEMPER (HALF HARD), PER ETCO METAL CODE NO. 02889.
 - 4.) PARTS MAY BE COATED WITH A LIGHT FILM OF LUBRICATION USED IN THE MANUFACTURING PROCESS.

P/C	DESCRIPTION	MAT'L
08351	MS48-1-NPS	NOTE 1
08353	MS48-1-TS	NOTE 2
08354	MS48-1-CRS	NOTE 3



Rev.	Description of Change/ SCN#	Date
1	REDRAWN ON SOLIDWORKS NO CHANGES SCJ ORG.ENG.DWG.DATE: 11-17-92	11-26-03




 FULL SCALE
 DIRECTION EXITING TOOL,
 WELD BUMP UP, TO THE FRONT

THIS PRINT IS THE PROPERTY OF ETCO INCORPORATED. NO PART OF THIS DESIGN MAY BE USED IN ANY WAY WITHOUT WRITTEN CONSENT FROM ETCO INCORPORATED.

UNCONTROLLED COPY

 THIRD ANGLE PROJECTION TOLERANCES UNLESS OTHERWISE SPECIFIED INCHES: .XX - ±.030 .XXX - ±.015 ANGLES: ±5°	TOOL NO. 0158	Title: .020 X .187 WELDING MALE TAB		
		DO NOT SCALE DWG.	Drawn By: S.JOHNSON	Date: 11-26-03
ETCO Incorporated Engineered Products 25 Bellows Street Warwick, RI 02888 Phone: (401) 467-2400 Fax: (401) 467-9230 www.ETCO.com		Chk'd/App'd By:	Scale: 10X	Size B
		Dwg. No.: MS48-1 cust		