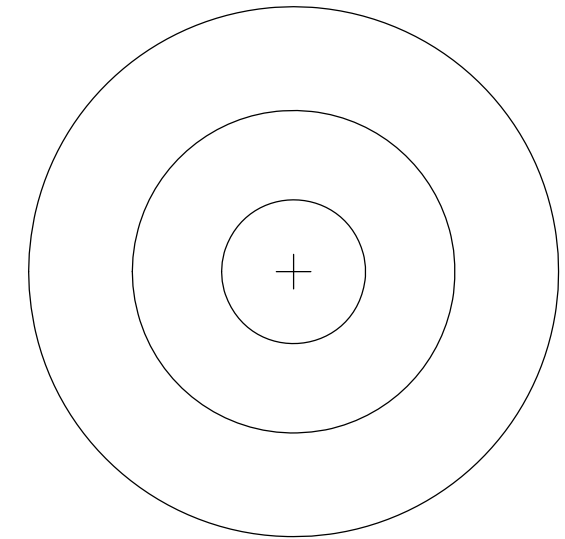
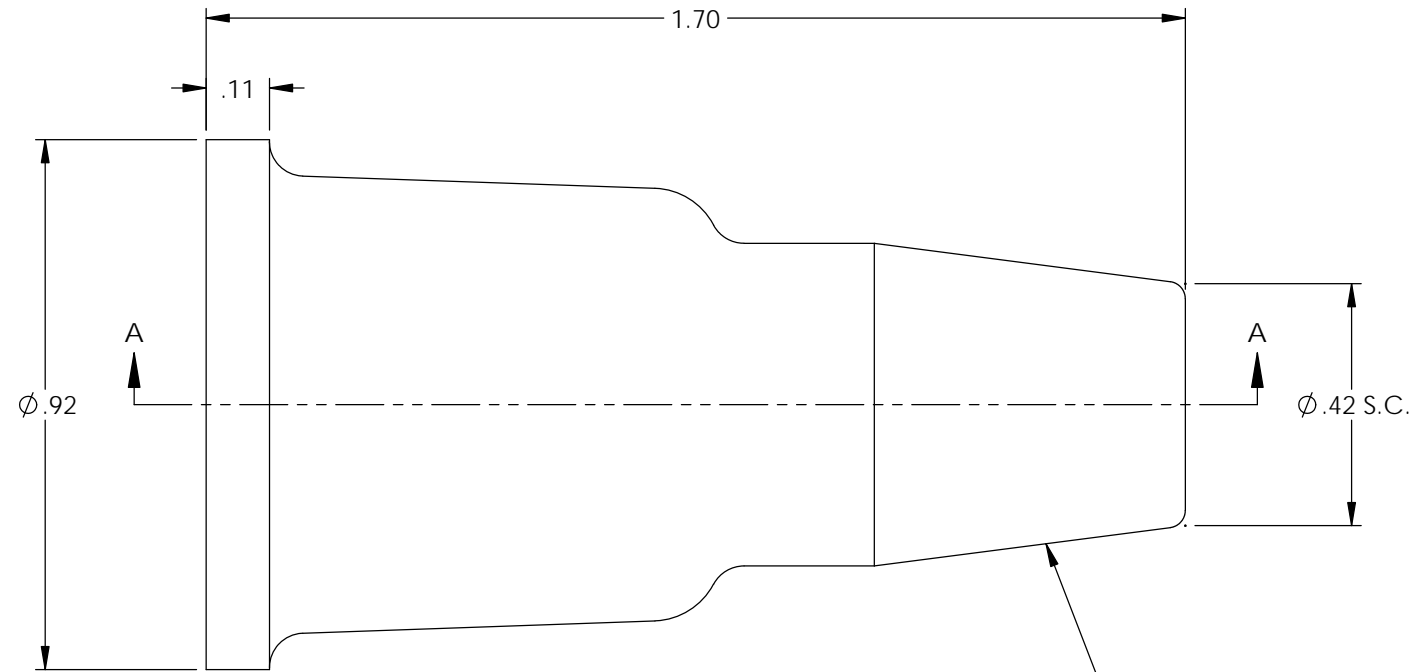
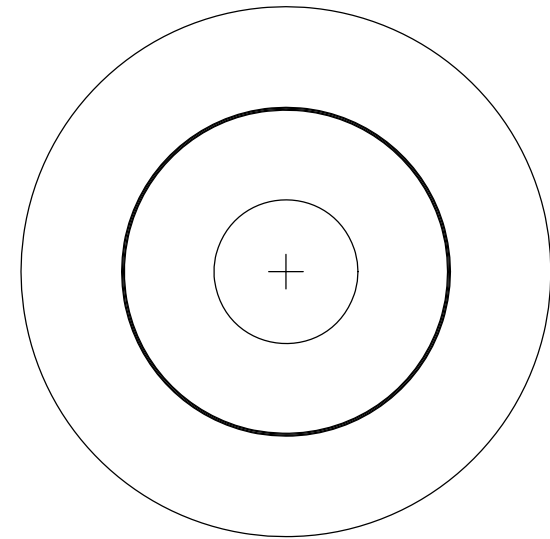


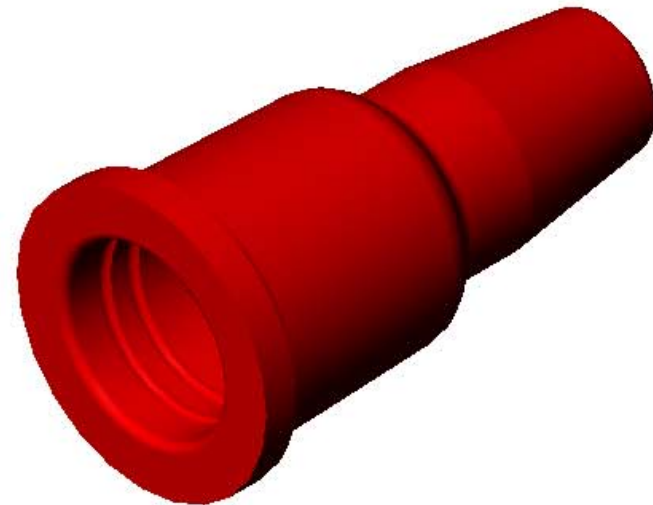
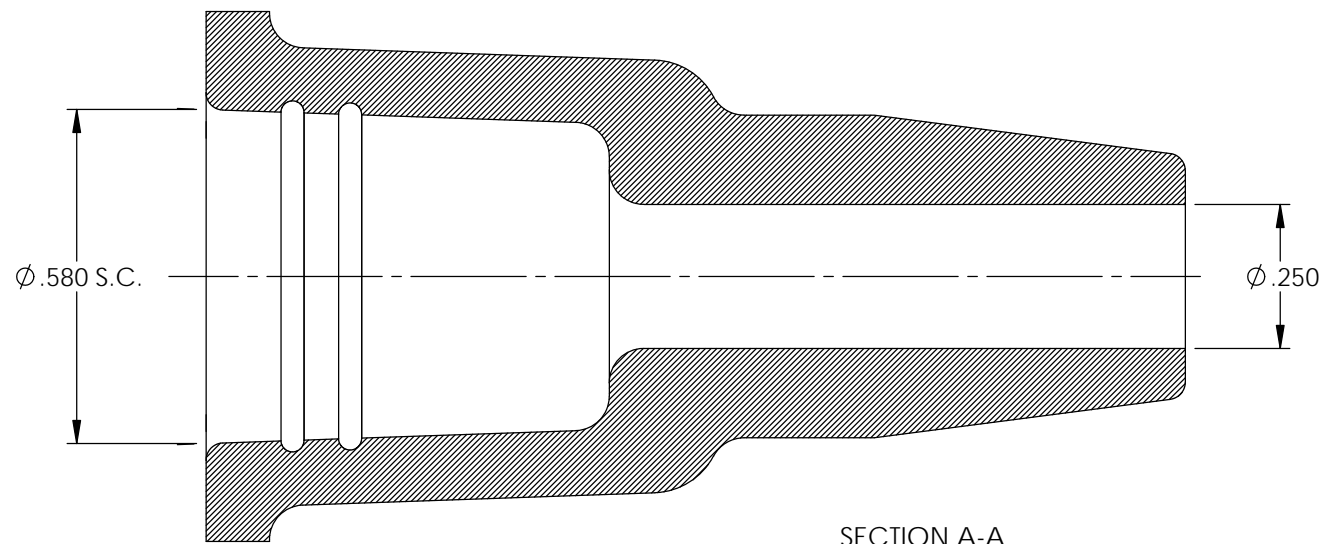
| P/C   | DESCRIPTION | COLOR | MATERIAL | TEMPERATURE |
|-------|-------------|-------|----------|-------------|
| 18081 | NP22-BS     | BLACK | SILICONE | 400°        |
| 16172 | NP22-RS     | RED   | SILICONE | 400°        |

| Rev. | Description of Change/ SCN#                          | Date    |
|------|--|---------|
| 1    | Redrawn in SW from ACAD<br>Org.Eng.Dwg.Date: 7/13/92 | 7/23/19 |

NOTE:  
FOR MAXIMUM PERFORMANCE AND RELIABILITY,  
ALWAYS USE ETCO ENGINEERED IGNITION TERMINALS  
WITH ETCO AUTOMOTIVE INSULATORS.



NOTE: DUROMETER TO BE TAKEN IN THIS AREA  
USING SHORE A-2 DUROMETER.  
(SEE FINISHED PARTS: MATERIAL/DUROMETER SPEC.)



SECTION A-A

# UNCONTROLLED COPY

|   |                                 |   |                                   |                             |
|---|---------------------------------|---|-----------------------------------|-----------------------------|
| <p>THIRD ANGLE PROJECTION<br/>TOLERANCES UNLESS OTHERWISE SPECIFIED<br/>INCHES: .XX - ±.030<br/>.XXX - ±.015<br/>ANGLES: ±5°</p>                                | <p>TOOL NO.<br/><b>2097</b></p> | <p>Title:<br/><b>Straight Nipple</b></p>  |                                   |                             |
|   |                                 | <p>DO NOT SCALE DWG.</p>                  | <p>Drawn By: <b>S.Johnson</b></p> | <p>Date: <b>7/23/19</b></p> |
| <p>ETCO Incorporated<br/>Engineered Products<br/>25 Bellows Street<br/>Warwick, RI 02888<br/>Phone: (401) 467-2400<br/>Fax: (401) 467-9230<br/>www.ETCO.com</p> |                                 | <p>Design Control By:<br/><b>ETCO</b></p> | <p>Scale:<br/><b>3X</b></p>       | <p>Size<br/><b>B</b></p>    |
|   |                                 | <p>Dwg. No.:<br/><b>NP22</b></p>          |                                   |                             |