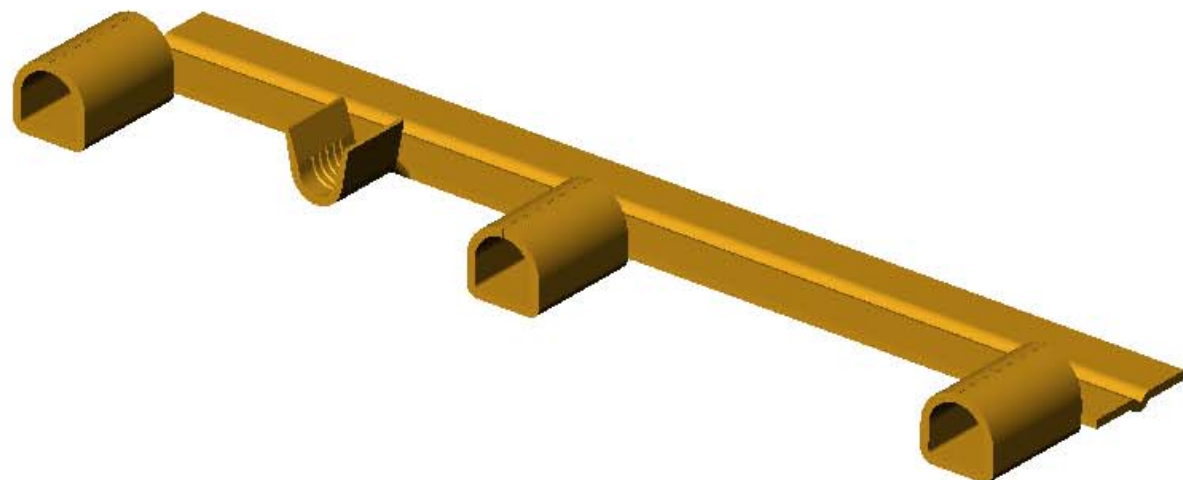
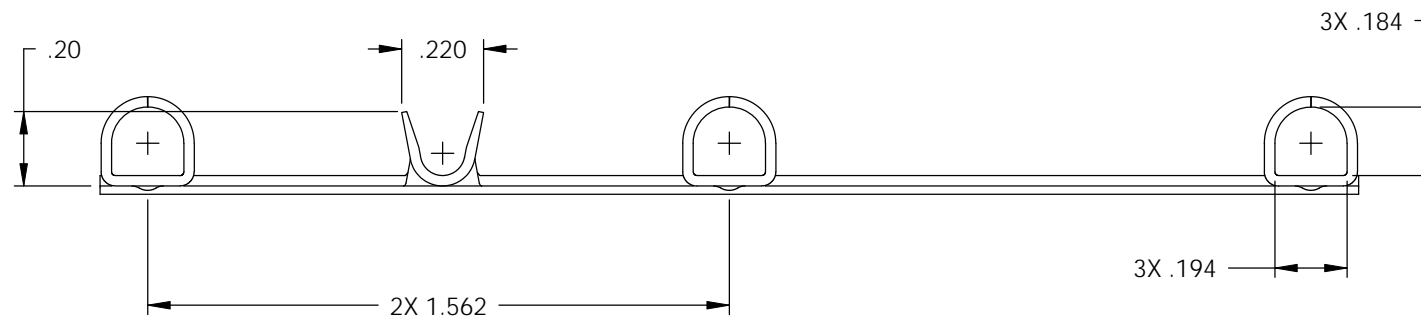
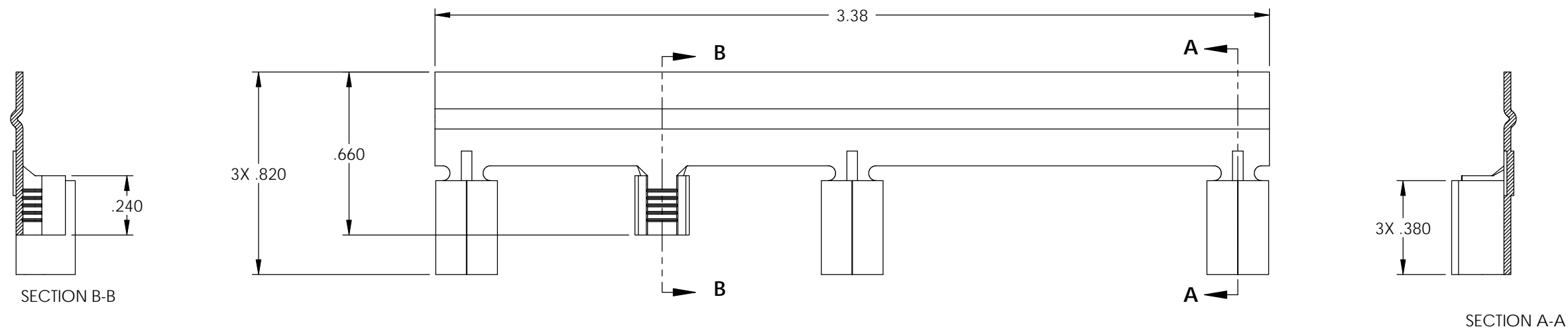


Rev.	Description of Change/ SCN#	Date
1	TRANSFER FROM CP TO EP	12-17-04

- NOTES:
- MATERIAL: .028 THICK C26000 BRASS; 1/2 HARD, ANNEALED TO TEMPER, PER ETCO METAL CODE 07010.
 - WIRE RANGE: #10-#14 AWG.
 - PARTS MAY BE COATED WITH A LIGHT FILM OF LUBRICATION USED IN THE MANUFACTURING PROCESS.

PART CODE	DESCRIPTION	MATERIAL
82203	OUTGRDCT-HB	NOTE 1



THIS PRINT IS THE PROPERTY OF ETCO INCORPORATED. NO PART OF THIS DESIGN MAY BE USED IN ANY WAY WITHOUT WRITTEN CONSENT FROM ETCO INCORPORATED.

UNCONTROLLED COPY

 THIRD ANGLE PROJECTION	TOOL NO.	Title: OUTDOOR GROUND CONTACT		
	0834	DO NOT SCALE DWG.	Drawn By: S.JOHNSON	Date: 12-17-04
TOLERANCES UNLESS OTHERWISE SPECIFIED INCHES: .XX - ±.030 .XXX - ±.015 ANGLES - ±5°	 ETCO	ETCO Incorporated Engineered Products 25 Bellows Street Warwick, R.I. 02888 Phone: (401)467-2400 FAX: (401)467-9230 www.ETCO.com		Chk'd/App'd By:
		Dwg. No.:		Scale: 2X
				OUTGRDCT