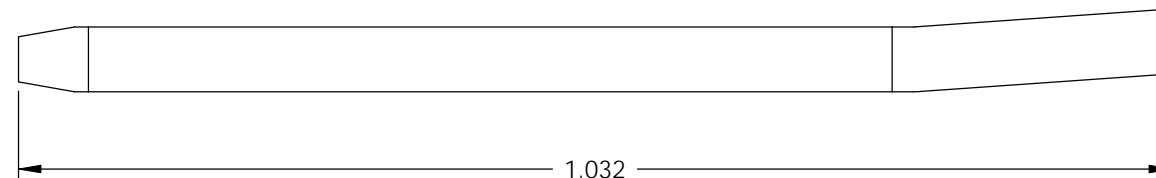
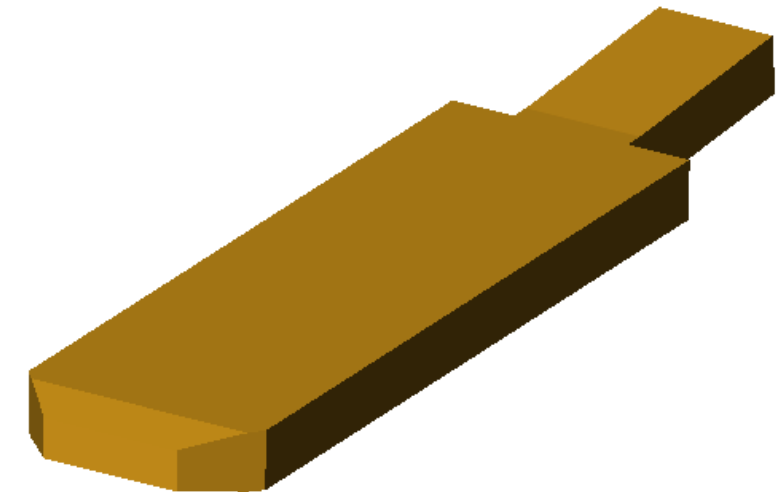
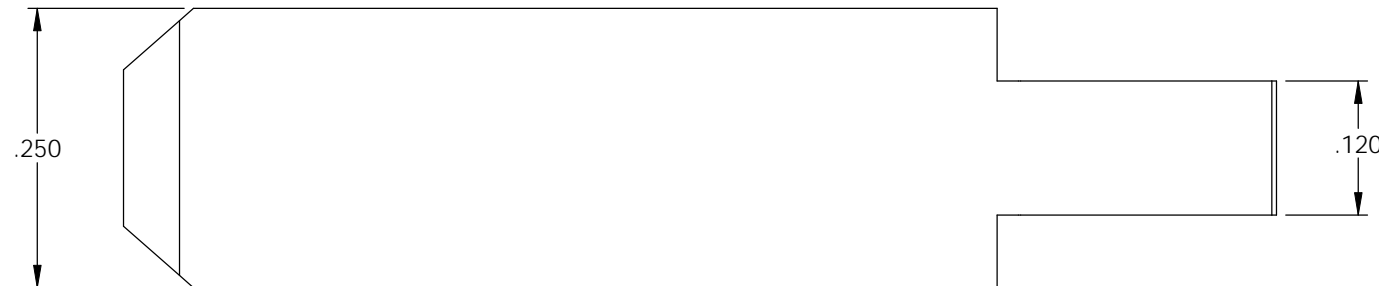


PART CODE	DESCRIPTION	MATERIAL
09895	P1-HB	NOTE 1

Rev.	Description of Change/ SCN#	Date
1	TRANSFER FROM CP TO EP	9-14-04

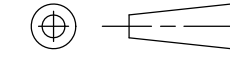



NOTES:

1. MATERIAL: .058 THICK C26000 BRASS, 1/2 HARD, ANNEALED TO TEMPER, PER ETCO METAL CODE 01008
2. PARTS MAY BE COATED WITH A LIGHT FILM OF LUBRICATION USED IN THE MANUFACTURING PROCESS.
3. ALL CORNERS SHOWN SHARP MAY HAVE A .010 RADIUS MAXIMUM.

THIS PRINT IS THE PROPERTY OF ETCO INCORPORATED. NO PART OF THIS DESIGN MAY BE USED IN ANY WAY WITHOUT WRITTEN CONSENT FROM ETCO INCORPORATED.

UNCONTROLLED COPY

 THIRD ANGLE PROJECTION	TOOL NO.	Title: BLADE		
	0814	DO NOT SCALE DWG.	Drawn By: S.JOHNSON	Date: 9-14-04
TOLERANCES UNLESS OTHERWISE SPECIFIED INCHES: .XX - ±.030 .XXX - ±.015 ANGLES - ±5°	 ETCO	ETCO Incorporated Engineered Products 25 Bellows Street Warwick, R.I. 02888 Phone: (401)467-2400 FAX: (401)467-9230 www.ETCO.com	Chk'd/App'd By:	Scale: 6X
			Dwg. No.: P1	Size B