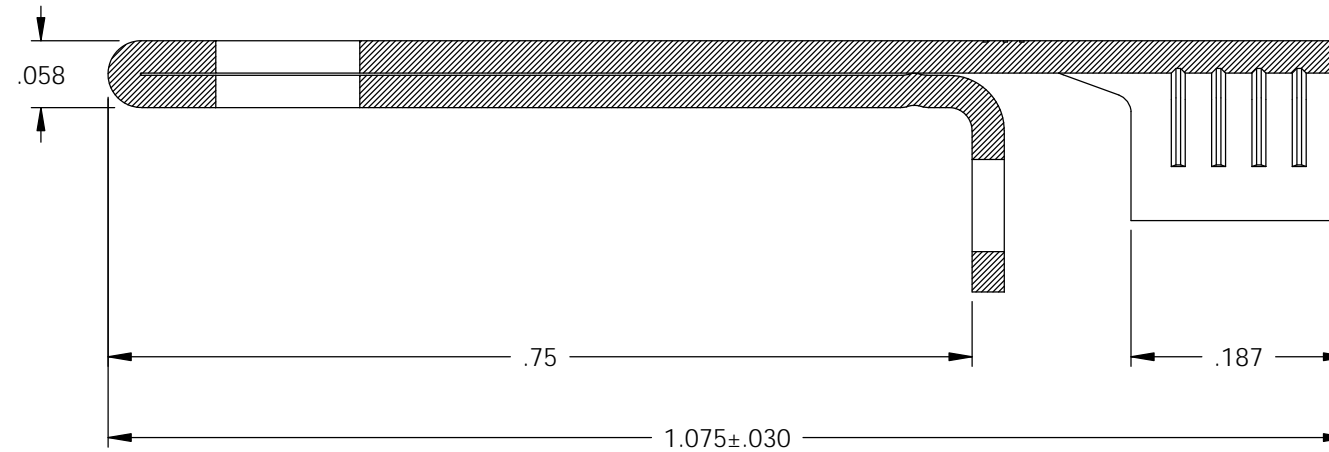


NOTES:

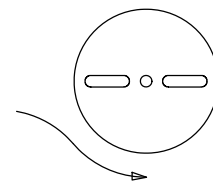
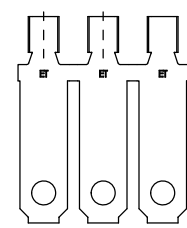
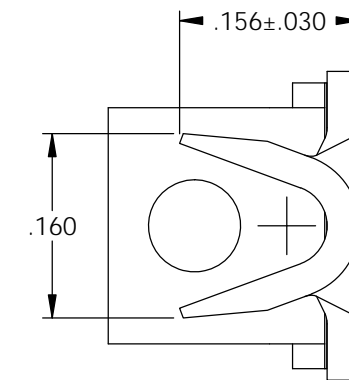
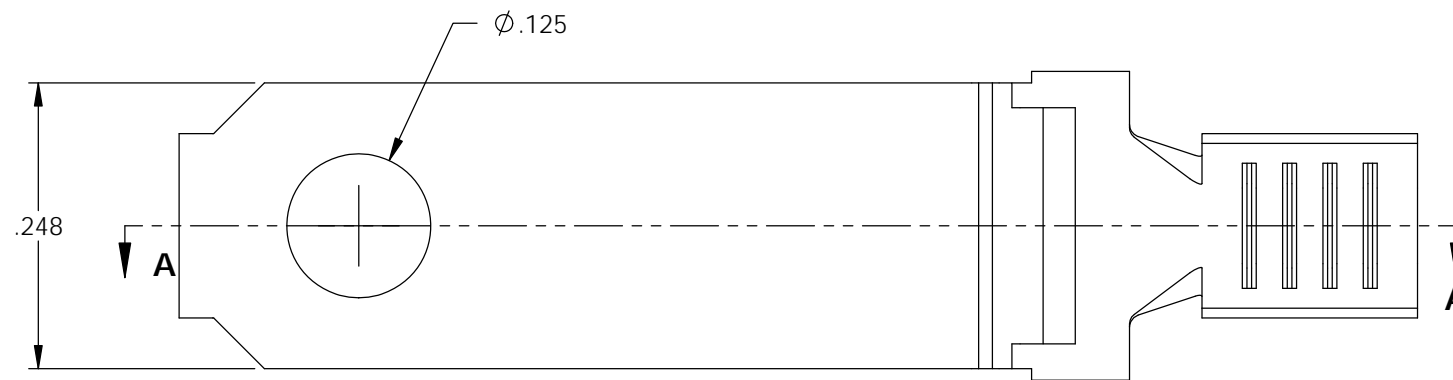
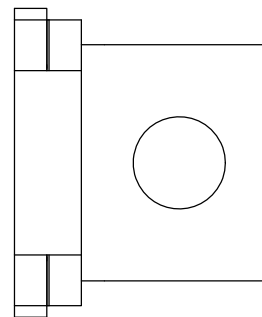
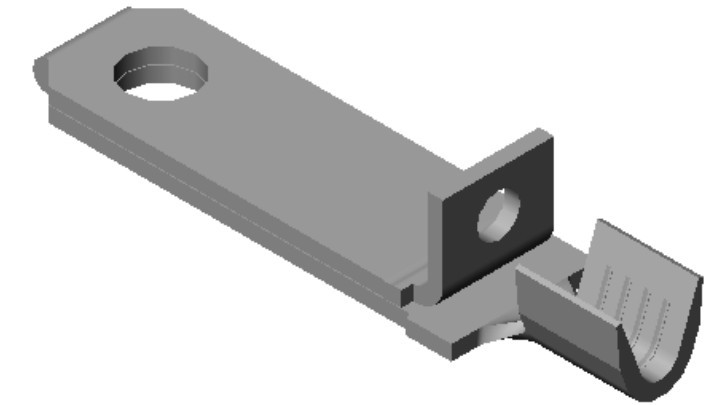
1. MATERIAL: .028 THICK C26000 BRASS; 1/2 HARD
ANNEALED TO TEMPER; PER ETCO METAL CODE 00717.
2. MATERIAL: .028 THICK PRE-TINNED C26000 BRASS; 1/2 HARD
ANNEALED TO TEMPER; PER ETCO METAL CODE 01695.
3. FOR REWIND INSTRUCTIONS SEE WI-09-10-8.
4. WIRE RANGE: #14-#18 AWG.

P/C	DESCRIPTION (2)	MAT'L	REWIND	
09431	PP1FHK-A-HB	NOTE 1	NO	X
14067	PP1FHK-ARC-HB	NOTE 1	YES	X
14366	PP1FHK-ARC-THB	NOTE 2	YES	X

Rev.	Description of Change/ SCN#	Date
1	TRANSFER FROM CP TO EP	10-26-04
2	ECR# 816 SCJ	11-2-11
3	ECR# 4215 SCJ	5/17/16



SECTION A-A
SCALE 6 : 1



DIRECTION EXITING TOOL
EARS DOWN, TO THE BACK
SEE NOTE 3

UNCONTROLLED COPY

<p>THIRD ANGLE PROJECTION TOLERANCES UNLESS OTHERWISE SPECIFIED INCHES: .XX - ±.030 .XXX - ±.015 ANGLES: ±5°</p>	<p>TOOL NO.</p> <p>0961 (3)</p>	<p>Title: NON-POLARIZED BLADE</p>	
		<p>DO NOT SCALE DWG.</p> <p>ETCO Incorporated Engineered Products 25 Bellows Street Warwick, RI 02888 Phone: (401) 467-2400 Fax: (401) 467-9230 www.ETCO.com</p>	<p>Drawn By: S.JOHNSON</p> <p>Date: 10/26/04</p>
		<p>Chk'd/App'd By:</p>	<p>Scale: 6X</p> <p>Size B</p>
		<p>Dwg. No.: PP1FHK cust</p>	