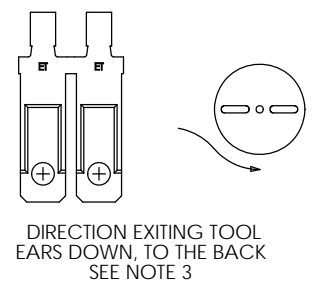
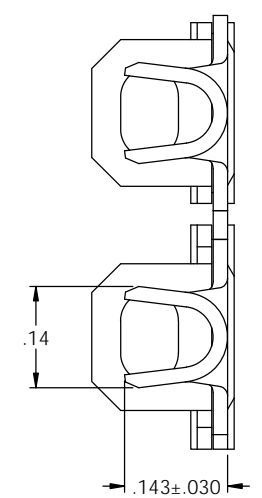
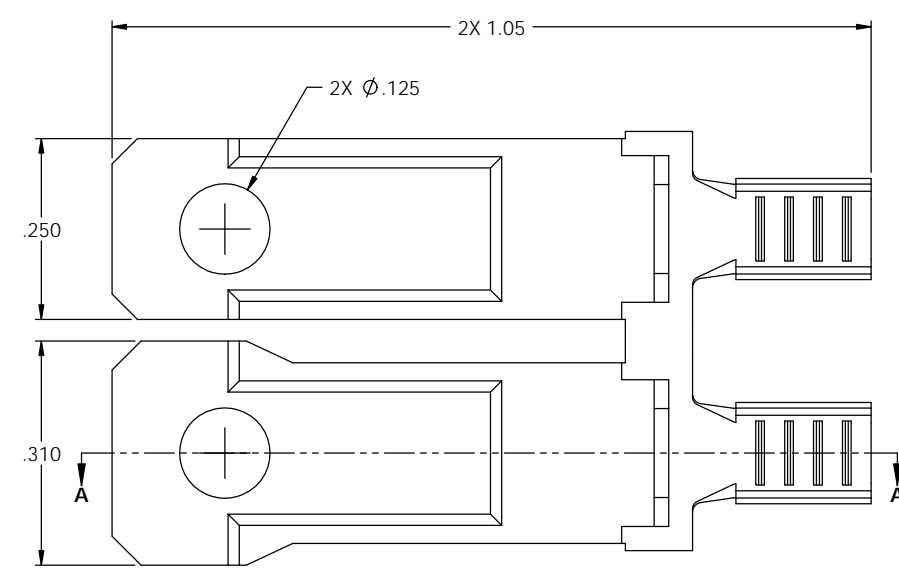
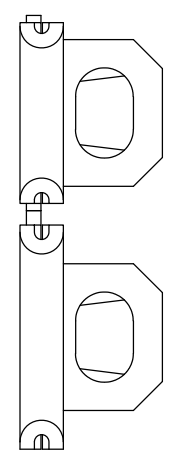
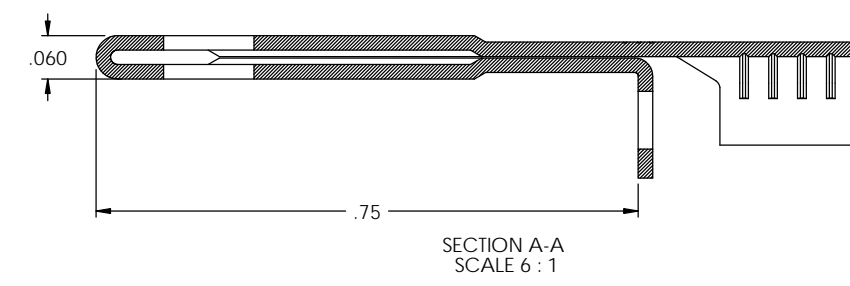
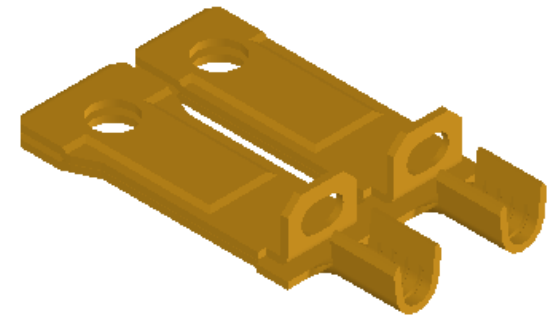
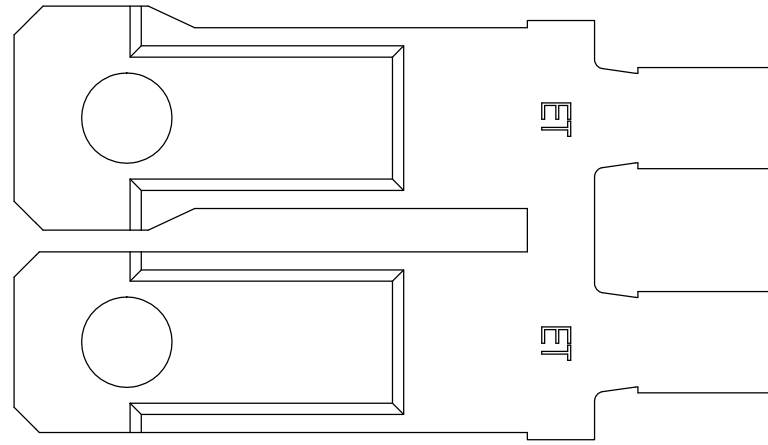


NOTES:

1. MATERIAL: .020 THICK C26000 BRASS; 1/2 HARD  
ANNEALED TO TEMPER; PER ETCO METAL CODE 00098.
2. WIRE RANGE: #14-#18 AWG.
3. FOR WINDING AND REWINDING INSTRUCTIONS SEE WI-09-10-8.

P/C	DESCRIPTION (3)	MAT'L	REWIND	RA
09836	B817F-A-HB	NOTE 1	NO	X
09838	B817F-ARB-HB	NOTE 1	YES	X

Rev.	Description of Change/ SCN#	Date
1	TRANSFER FROM CP TO EP	10-26-04
2	COMPLETED P/C LIST SCJ	9-10-08
3	ECR# 816 SCJ	10-31-11



**UNCONTROLLED COPY**

<p>THIRD ANGLE PROJECTION</p>	<p>TOOL NO. 0889</p>	<p>Title: POLARIZED PADDED BLADE</p>		
	<p>TOLERANCES UNLESS OTHERWISE SPECIFIED</p> <p>INCHES: XX - ±.030 XXX - ±.015</p> <p>ANGLES: ±5°</p>	<p>DO NOT SCALE DWG.</p>	<p>Drawn By: S.JOHNSON</p>	<p>Date: 10-26-04</p>
	<p>ETCO Incorporated Engineered Products 25 Bellows Street Warwick, RI 02888 Phone: (401) 467-2400 Fax: (401) 467-9230 www.ETCO.com</p>	<p>Chk'd/App'd By:</p>	<p>Scale: 6X</p>	<p>Size: C</p>
		<p>Dwg. No.: PB817F cust</p>		