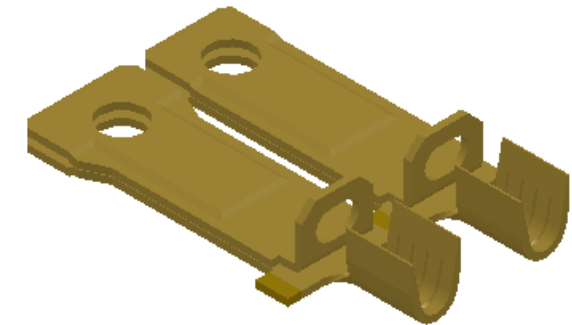
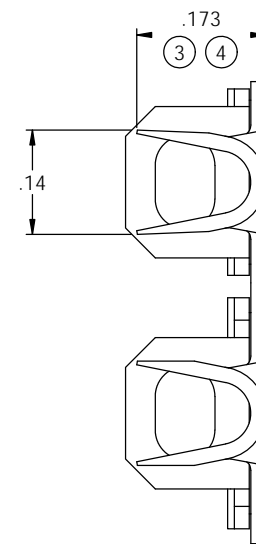
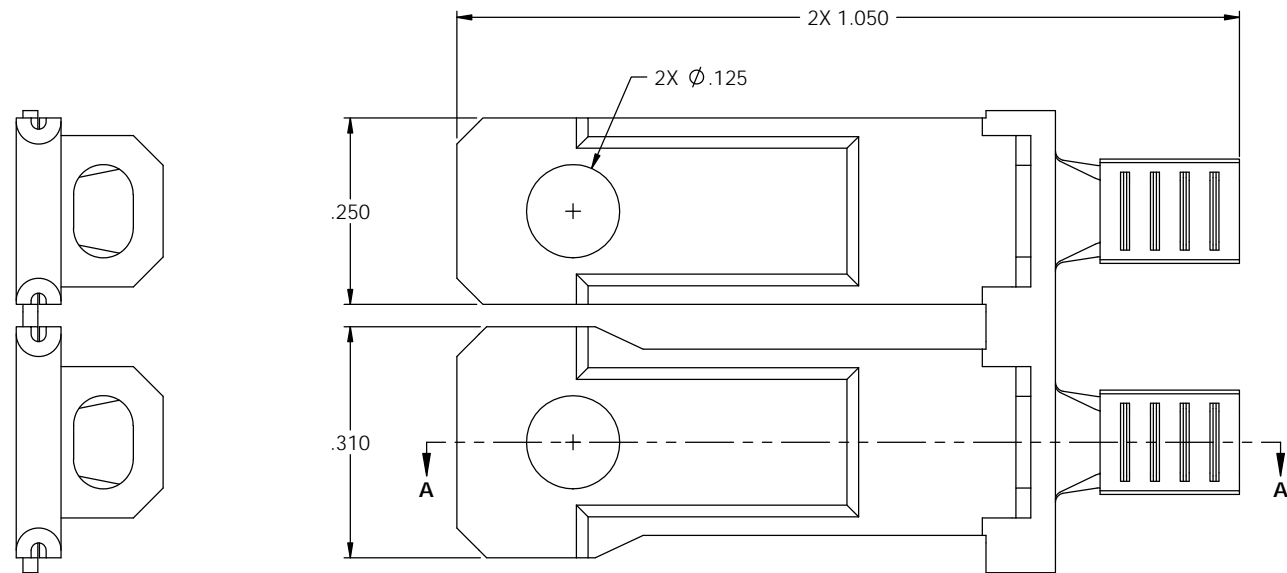
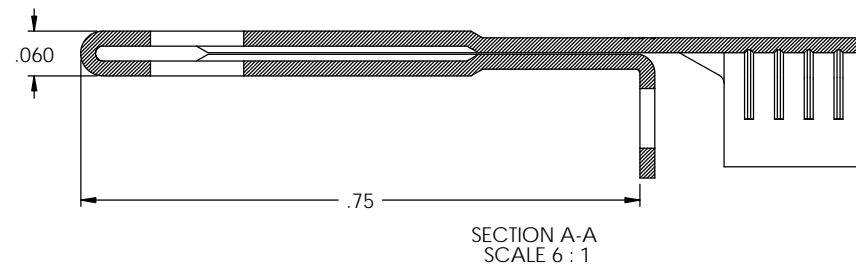
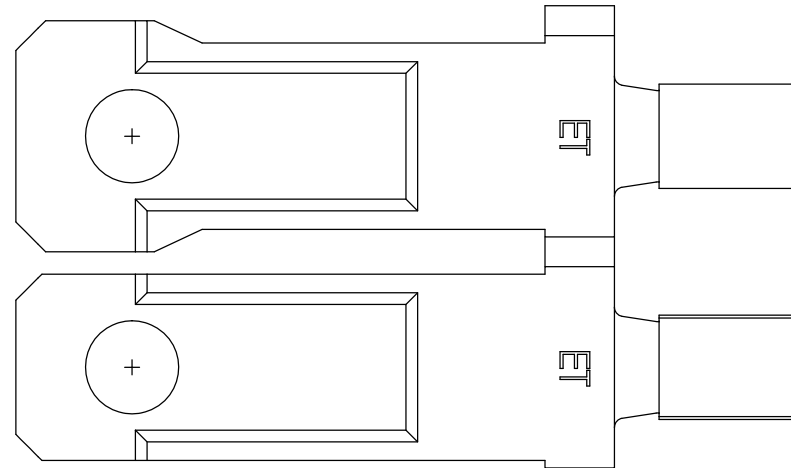


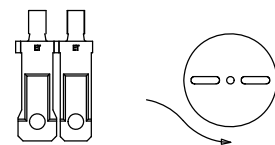
NOTES:

1. MATERIAL: .020 THICK C26000 BRASS; 1/2 HARD ANNEALED TO TEMPER; PER ETCO METAL CODE 00098.
2. FOR WINDING AND REWINDING INSTRUCTIONS SEE PR-3-07.
3. WIRE RANGE: 12 AWG.



Rev.	Description of Change/ SCN#	Date
1	TRANSFERED FROM CP SCJ	9-24-08
2	ECR# 816 SCJ	10-31-11
3	ECR# 5435 SCJ	1/28/19
4	ECR# 5659 SCJ	7/26/19

P/C	DESCRIPTION ②	REWIND	MAT'L	REVISION
10484	PB817F12-A-HB	NO	NOTE 1	X
10485	PB817F12-ARB-HB	YES	NOTE 1	X



DIRECTION EXITING TOOL EARS DOWN, TO THE BACK SEE NOTE 2

UNCONTROLLED COPY

<p>THIRD ANGLE PROJECTION</p>	<p>TOOL NO. 0889</p>	<p>Title: POLARIZED PADDED BLADE</p>		
		<p>DO NOT SCALE DWG.</p>	<p>Drawn By: S.JOHNSON</p>	<p>Date: 9-24-08</p>
<p>TOLERANCES UNLESS OTHERWISE SPECIFIED</p> <p>INCHES: .XX - ±.030 .XXX - ±.015</p> <p>ANGLES: ±5°</p>		<p>ETCO Incorporated Engineered Products 25 Bellows Street Warwick, RI 02888 Phone: (401) 467-2400 Fax: (401) 467-9230 www.ETCO.com</p>	<p>Chk'd/App'd By:</p>	<p>Size: C</p>
		<p>Dwg. No.: PB817F12 cust</p>		