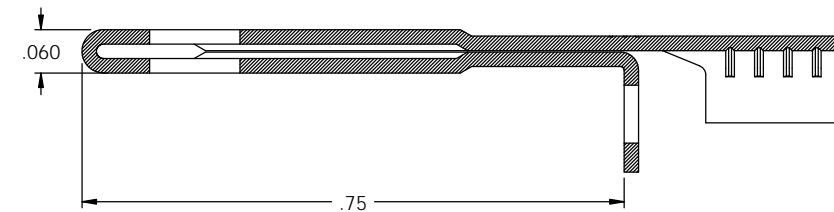
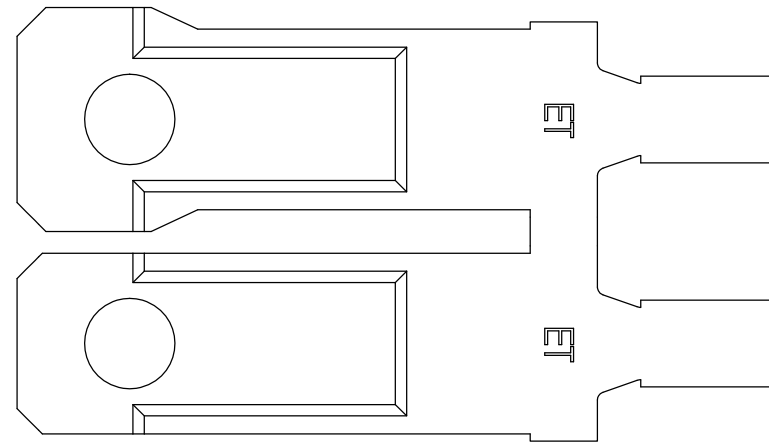
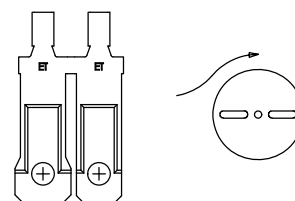
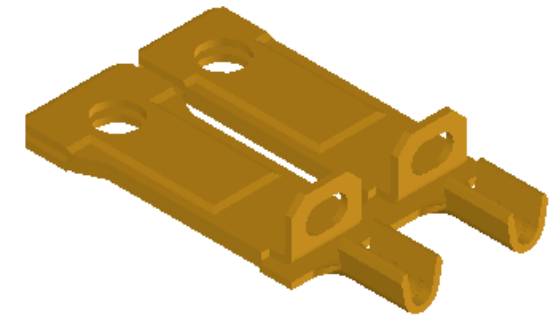
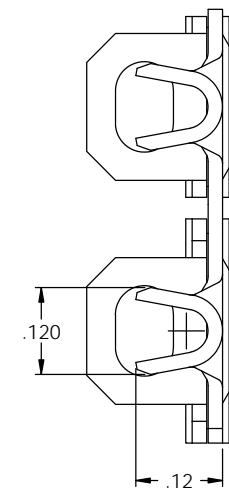
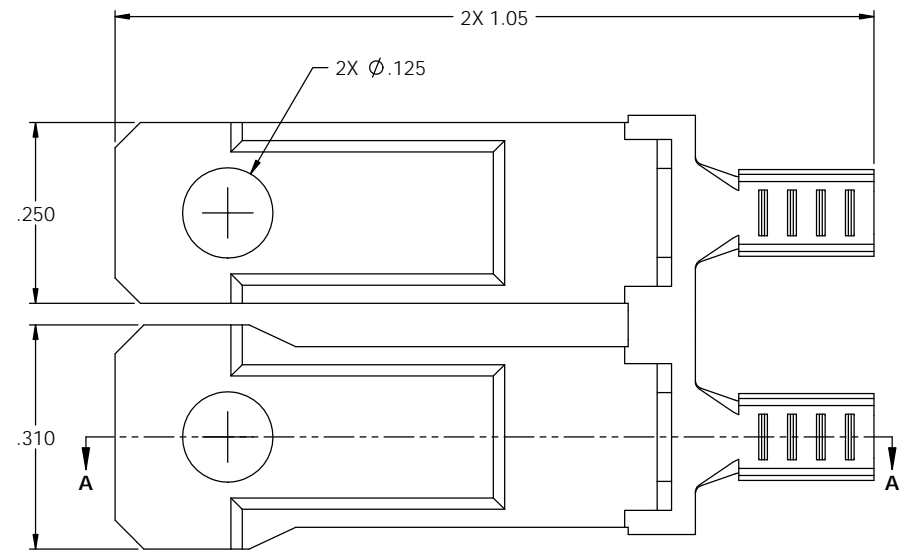
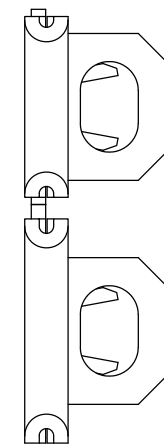


NOTES:

1. MATERIAL: .020 THICK C26000 BRASS; 1/2 HARD
ANNEALED TO TEMPER; PER ETCO METAL CODE 00098.
2. WIRE RANGE: #18-#20 AWG.
3. FOR WINDING AND REWINDING INSTRUCTIONS SEE WI-09-10-8.



SECTION A-A
SCALE 6 : 1



DIRECTION EXITING TOOL
EARS DOWN, TO THE BACK

P/C	DESCRIPTION (3)	MAT'L	REWIND	RA
14224	PB817F18-A-HB	NOTE 1	NO	X
14225	PB817F18-ARB-HB	NOTE 1	YES	X
14227	PB817F18-D-HB	NOTE 1	NO	X

Rev.	Description of Change/ SCN#	Date
1	TRANSFER FROM CP TO EP	10-26-04
2	COMPLETED P/C LIST SCJ	9-10-08
3	ECR# 816 SCJ	10-31-11

UNCONTROLLED COPY

<p>THIRD ANGLE PROJECTION</p>	TOOL NO.	Title: POLARIZED PADDED BLADE		
	0889	DO NOT SCALE DWG.	Drawn By: S.JOHNSON	Date: 10-26-04
<p>TOLERANCES UNLESS OTHERWISE SPECIFIED</p> <p>INCHES: XX - ±.030 XXX - ±.015</p> <p>ANGLES: ±5°</p>	<p>ETCO Incorporated Engineered Products 25 Bellows Street Warwick, RI 02888 Phone: (401) 467-2400 Fax: (401) 467-9230 www.ETCO.com</p>	Chk'd/App'd By:	Scale: 6X	Size: C
		Dwg. No.: PB817F18 cust		