
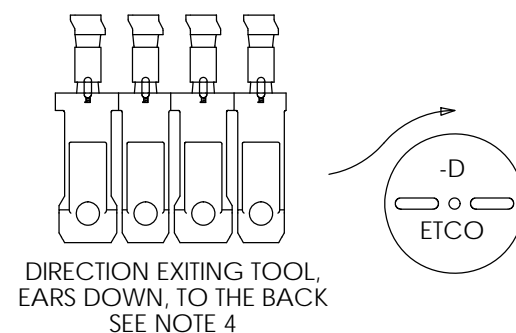
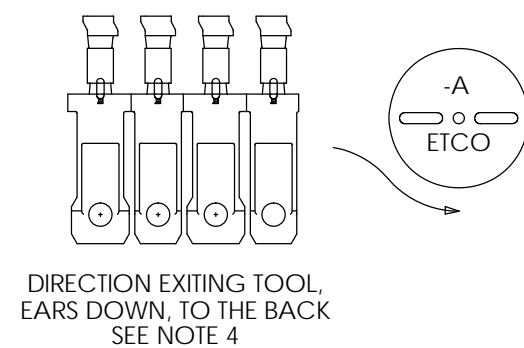
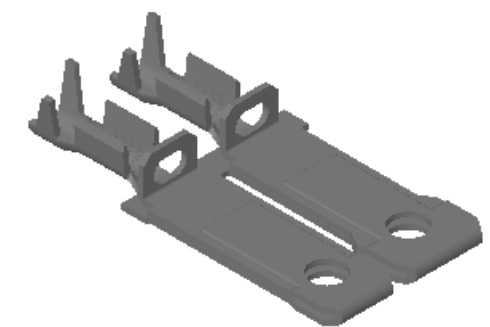
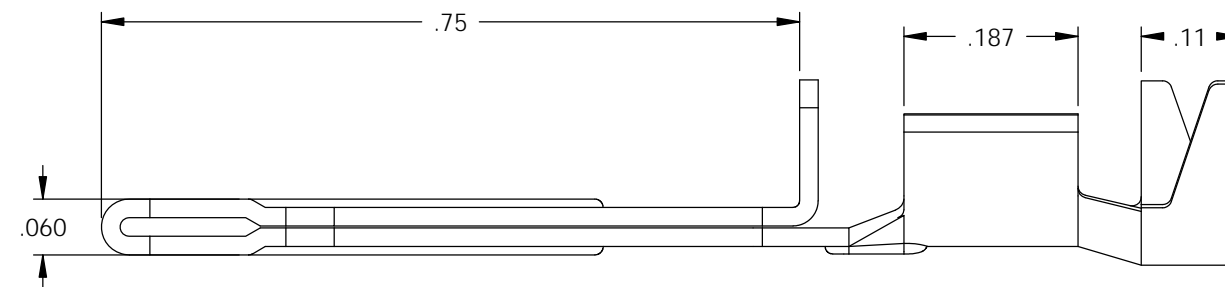
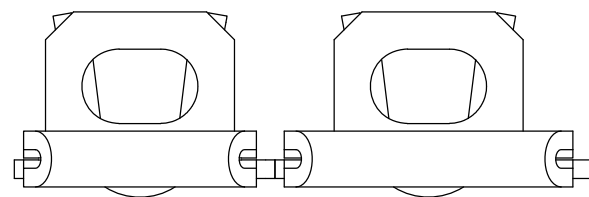
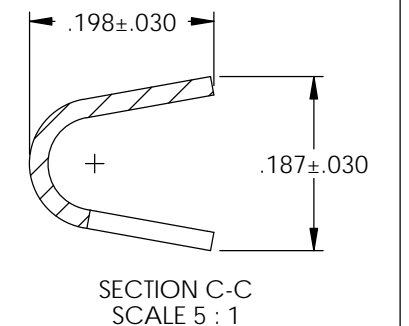
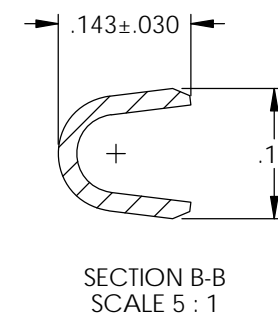
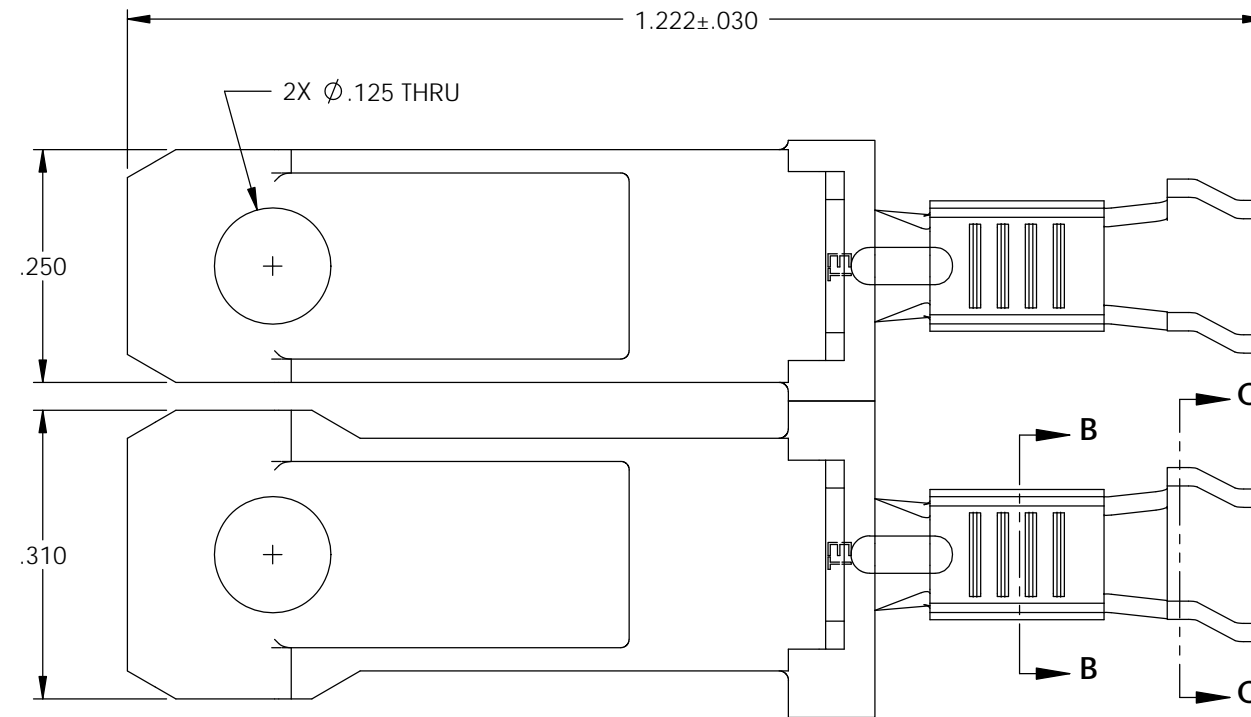


NOTE:

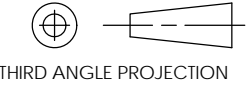

- 1.) MAT'L: .020 BRASS,
#2 TEMPER (HALF HARD), ANNEALED TO TEMPER,
PER ETCO METAL CODE NO. 00093.
- 2.) MAT'L: .020 PRE-TINNED BRASS,
#2 TEMPER (HALF HARD), ANNEALED TO TEMPER,
PER ETCO METAL CODE NO. 00094.
- 3.) PARTS MAY BE COATED WITH A LIGHT FILM
OF LUBRICATION USED IN THE MANUFACTURING
PROCESS.
- 4.) FOR REWINDS SEE WI-09-10-08.
- 5.) WIRE RANGE: 14-18 AWG.
- 6.) INSULATION RANGE: ϕ .120 - ϕ .175

P/C	DESCRIPTION (3)	MAT'L	REWIND	
14192	PB817F2-ARB-HB	NOTE 1	YES	X
14135	PB817F2-ARB-THB	NOTE 2	YES	X
14332	PB817F2-D-HB	NOTE 1	NO	X

Rev.	Description of Change/ SCN#	Date
1	TRANSFERED FROM CP SCJ	10-26-04
2	SCN-140383 JMR	6-10-08
3	ECR# 816 SCJ	11-2-11



UNCONTROLLED COPY

 THIRD ANGLE PROJECTION TOLERANCES UNLESS OTHERWISE SPECIFIED INCHES: .XX - ±.030 .XXX - ±.015 ANGLES - ±5°	TOOL NO. 0858	Title: PADDED SPACE BLADE		
		ETCO Incorporated Engineered Products 25 Bellows Street Warwick, R.I. 02888 Phone: (401)467-2400 FAX: (401)467-9230 www.ETCO.com	DO NOT SCALE DWG. Drawn By: S. JOHNSON Chk'd/App'd By:	Date: 8-6-03 Scale: 5:1 Size: B
		Dwg. No.: PB817F2		