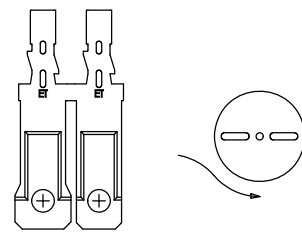
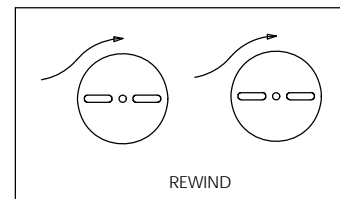
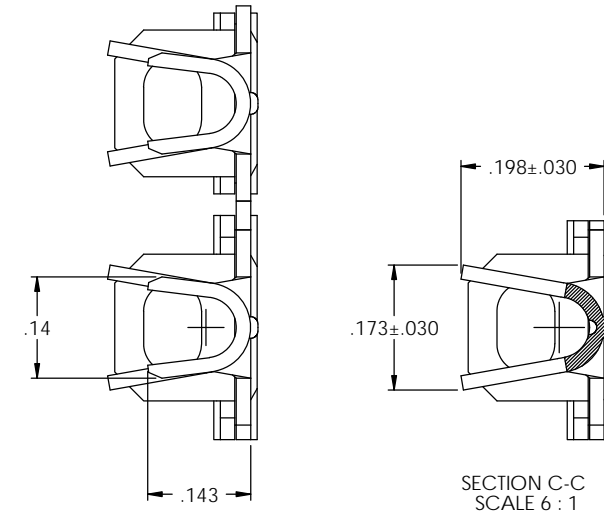
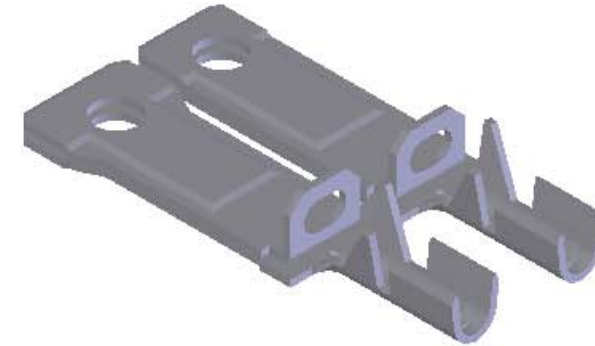
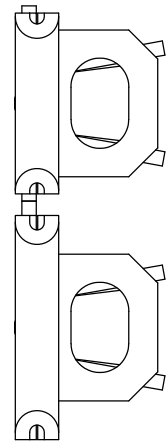
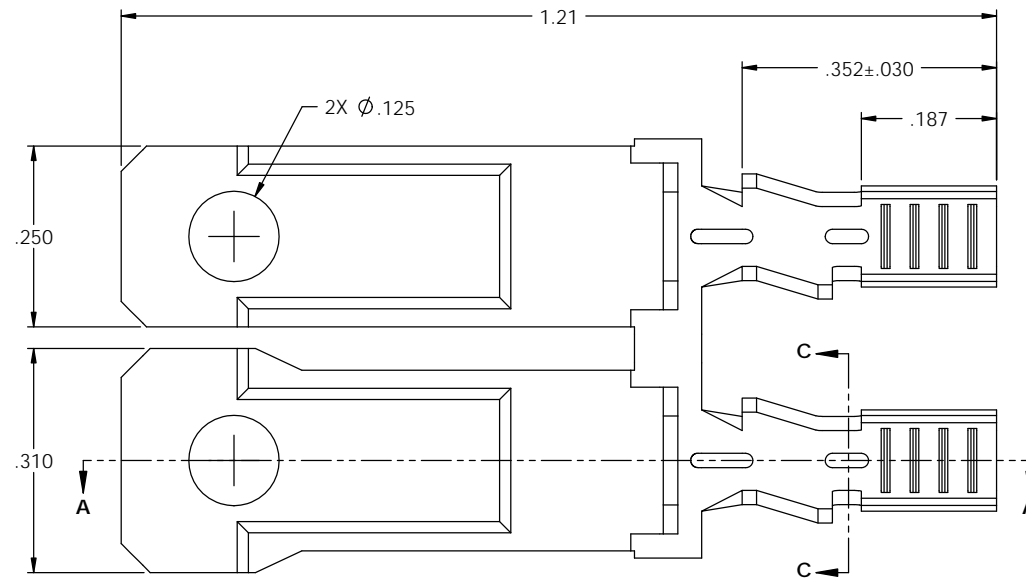
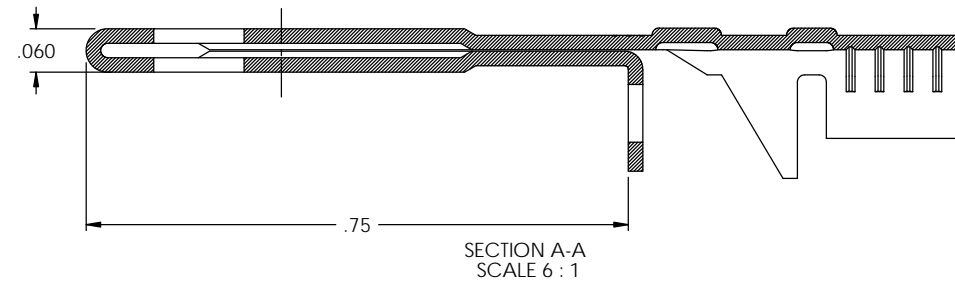
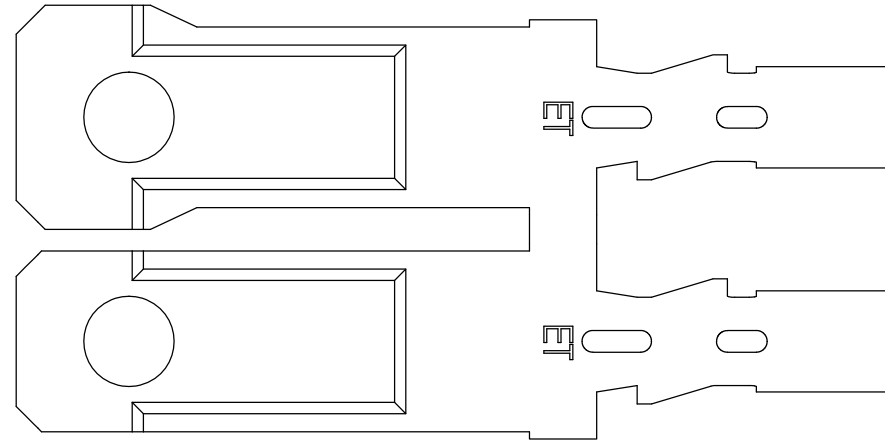
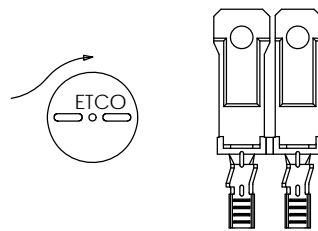


- NOTES:
 1. MATERIAL: .020 THICK C26000 BRASS; 1/2 HARD ANNEALED TO TEMPER; PER ETCO METAL CODE 00132.
 2. WIRE RANGE: #14-#18 AWG.
 3. INSULATION RANGE: ϕ .155 - ϕ .125



DIRECTION EXITING TOOL
EARS DOWN, TO THE BACK



DIRECTION TOWARDS APPLICATOR
EARS UP, TO THE FRONT

THIS PRINT IS THE PROPERTY OF ETCO INCORPORATED. NO PART OF THIS DESIGN MAY BE USED IN ANY WAY WITHOUT WRITTEN CONSENT FROM ETCO INCORPORATED.

PART CODE	DESCRIPTION	MATERIAL	REVISION
14087	PB817FR2*ARB-HB	NOTE 1	X

Rev.	Description of Change/ SCN#	Date
1	TRANSFER FROM CP TO EP	10-26-04
2	SCN-140390 JMR	6-10-08

UNCONTROLLED COPY

 THIRD ANGLE PROJECTION TOLERANCES UNLESS OTHERWISE SPECIFIED INCHES: XX - ±.030 .XXX - ±.015 ANGLES - ±5°	TOOL NO. 0888 	Title: POLARIZED PADDED BLADE DO NOT SCALE DWG.		Drawn By: S. JOHNSON Date: 10-26-04
	ETCO Incorporated Engineered Products 25 Bellows Street Warwick, R.I. 02888 Phone: (401)467-2400 FAX: (401)467-9230 www.ETCO.com		Chk'd/App'd By: Scale: 6X Size: C	Dwg. No.: PB817FR2