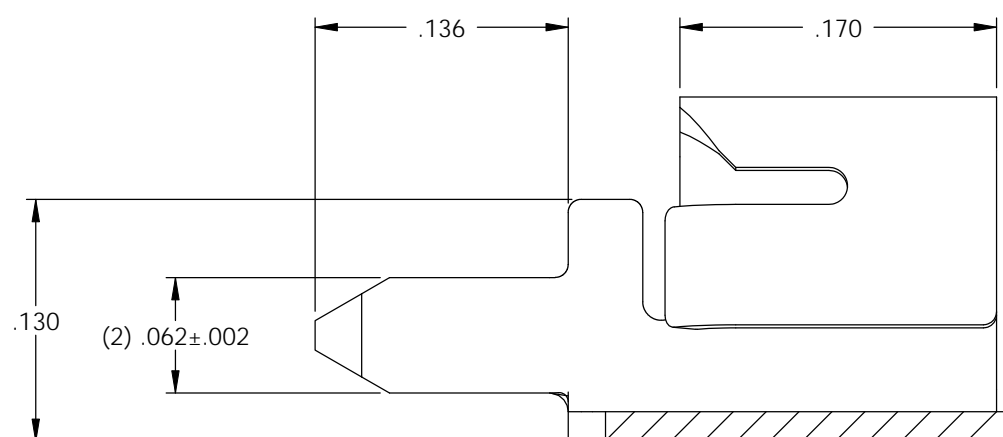
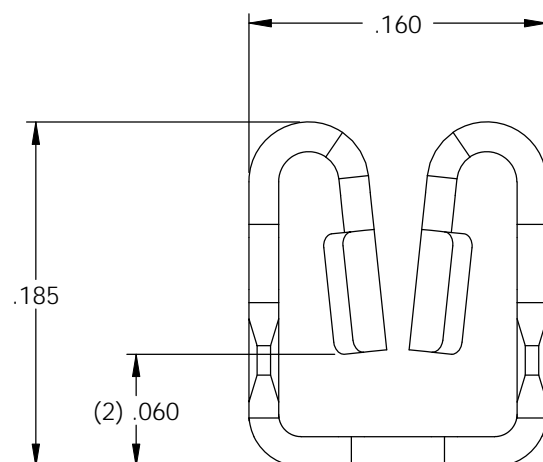
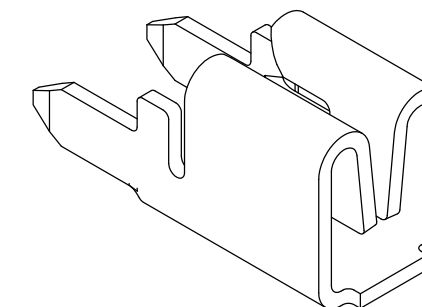
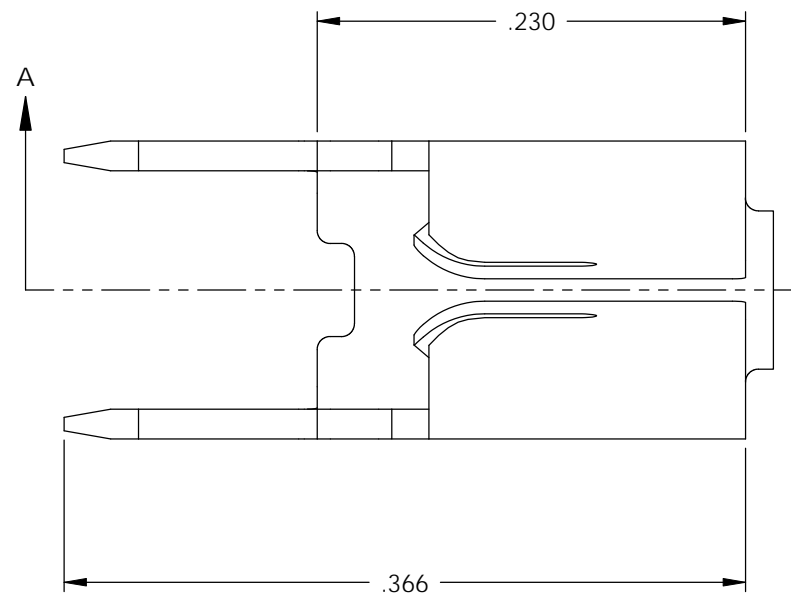


- NOTES:
 1. MATERIAL: .016 THICK BRASS
 #4 TEMPER (FULL HARD)
 PER ETCO METAL CODE 05016.
 2. POST PLATE: TIN OVER NICKEL.

P/C	DESCRIPTION	POST-PLATED
09622	PCB-M062-HB-TAF	YES

Rev.	Description of Change/ SCN#	Date
-	INITIAL RELEASE ECR#572 SCJ	3/14/11



SECTION A-A
 SCALE 10 : 1

UNCONTROLLED COPY


 PART PRODUCED IN
 LOOSE PIECE FORM

 THIRD ANGLE PROJECTION TOLERANCES UNLESS OTHERWISE SPECIFIED INCHES: .XX - ±.030 .XXX - ±.015 ANGLES: ±5°	TOOL NO. 0765	Title: BOTTOM & SIDE ENTRY TERMINAL		
		DO NOT SCALE DWG.	Drawn By: S.JOHNSON	Date: 3/14/11
ETCO Incorporated Engineered Products 25 Bellows Street Warwick, RI 02888 Phone: (401) 467-2400 Fax: (401) 467-9230 www.ETCO.com		Chk'd/App'd By:	Scale: 10X	Size B
Dwg. No.: PCB-M062-HB-TAF cust				