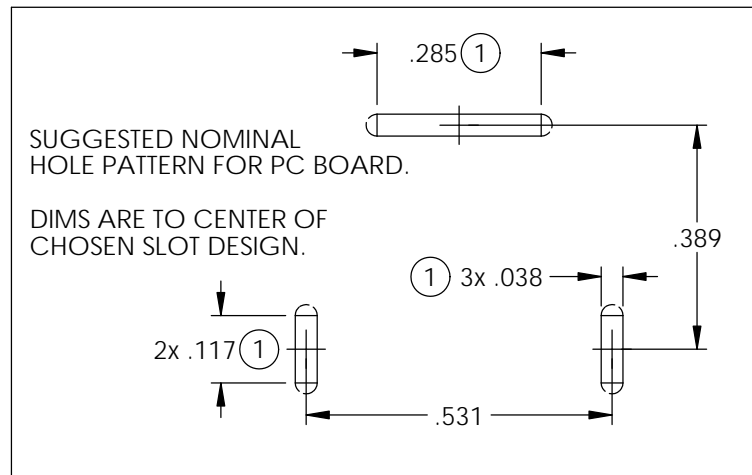
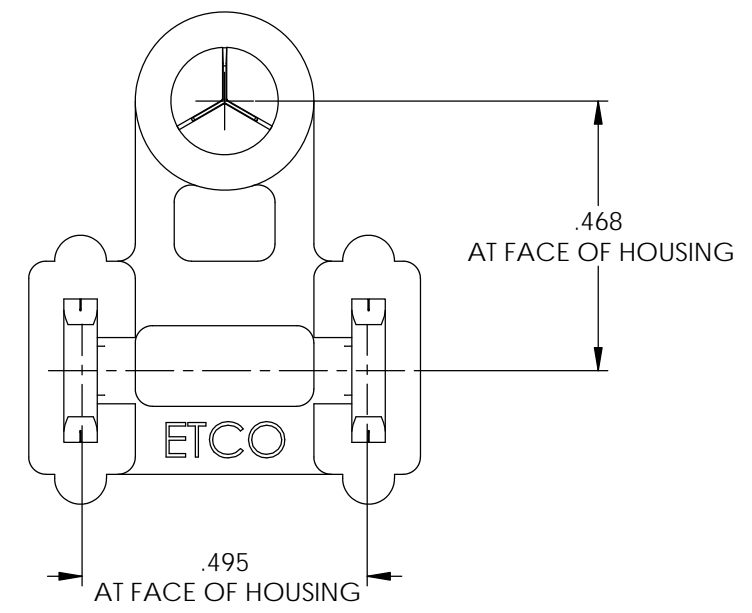
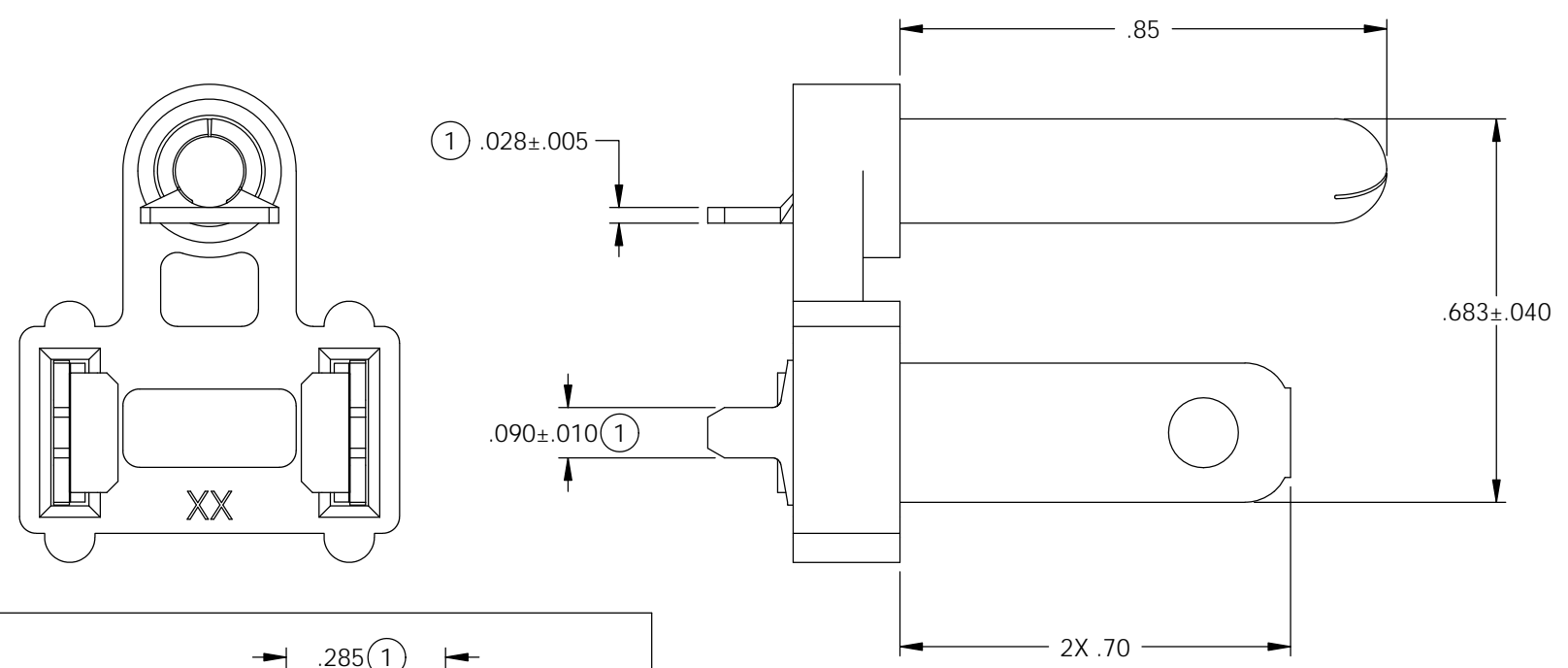
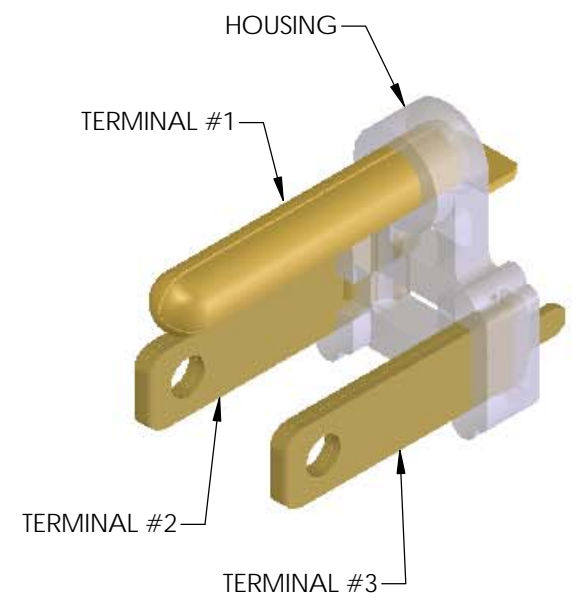
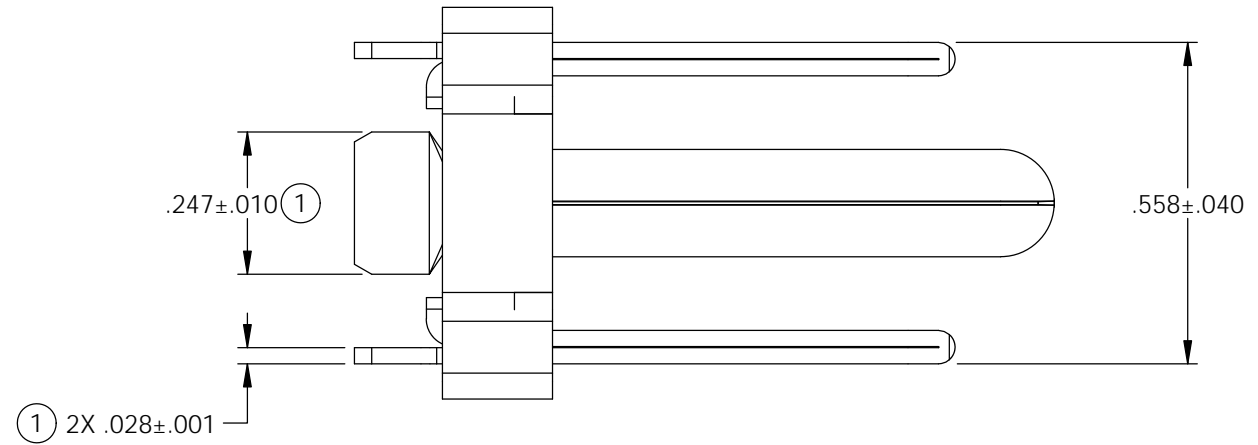


ASS'Y ITEM	P/C	DESCRIPTION	MAT'L	PLATING
TERMINAL #1	14367	PN187H-PCB-HB	BRASS	NONE
TERMINAL #2	14016	PPBF4-PCB-HB	BRASS	NONE
TERMINAL #3	14016	PPBF4-PCB-HB	BRASS	NONE
HOUSING	81011	BHBP01	POLYPROPYLENE	N/A

Rev.	Description of Change/ SCN#	Date
-	Approved For Mfg SCJ	2/24/16
1	Added detail to tabs and slot design SCJ	6/28/16



THIS PRINT IS THE PROPERTY OF ETCO INCORPORATED. NO PART OF THIS DESIGN MAY BE USED IN ANY WAY WITHOUT WRITTEN CONSENT FROM ETCO INCORPORATED.

<b>UNCONTROLLED COPY</b>			
 THIRD ANGLE PROJECTION	TOOL NO. <b>0861</b>	Title: <b>GROUND BLADE BRIDGE ASSEMBLY (PCB) - 37049</b>	
	 <b>ETCO</b>	DO NOT SCALE DWG.	Drawn By: S.JOHNSON
TOLERANCES UNLESS OTHERWISE SPECIFIED INCHES: .XX - ±.030 .XXX - ±.015 ANGLES - ±5°		ETCO Incorporated Engineered Products 25 Bellows Street Warwick, R.I. 02888 Phone: (401)467-2400 FAX: (401)467-9230 www.ETCO.com	Chk'd/App'd By:
		Dwg. No.: <b>GBBA-PCB cust</b>	