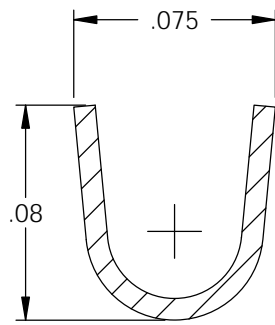
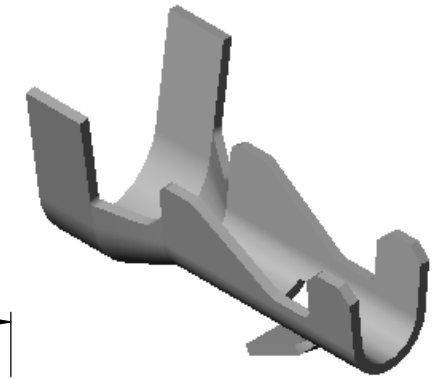


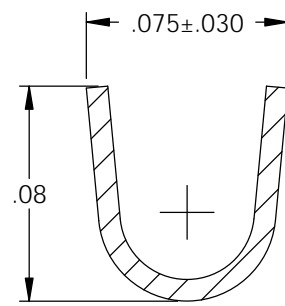
- NOTE:
- MAT'L: .008 THK., BRASS, #4 TEMPER (FULL HARD), PER ETCO METAL CODE NO. 00186.
 - POST-PLATE 100% TIN: .000150-.000275 THK. MATTE FINISH, OVER .000050 MIN. THK. NICKEL.
 - PARTS MAY BE COATED WITH A LIGHT FILM OF LUBRICATION USED IN THE MANUFACTURING PROCESS.
 - TO MATE WITH A .062 THK. PC BOARD WITH A $\phi .072 \pm .003$ THRU HOLE.
 - WIRE RANGE: 22-18 AWG.
 - INSUL RANGE: $\phi .060-.110$.

P/C	Part Number	Material	Plating
09627	PCB001-HB-TNAF	Note 1	Note 2

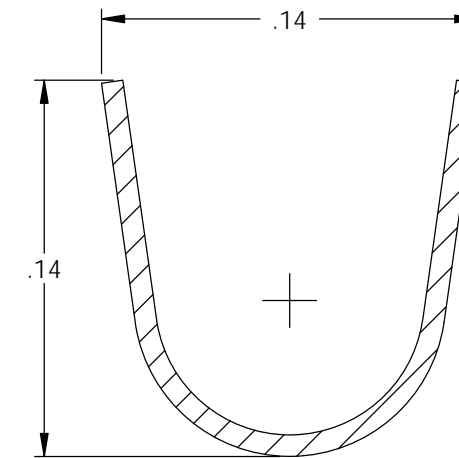
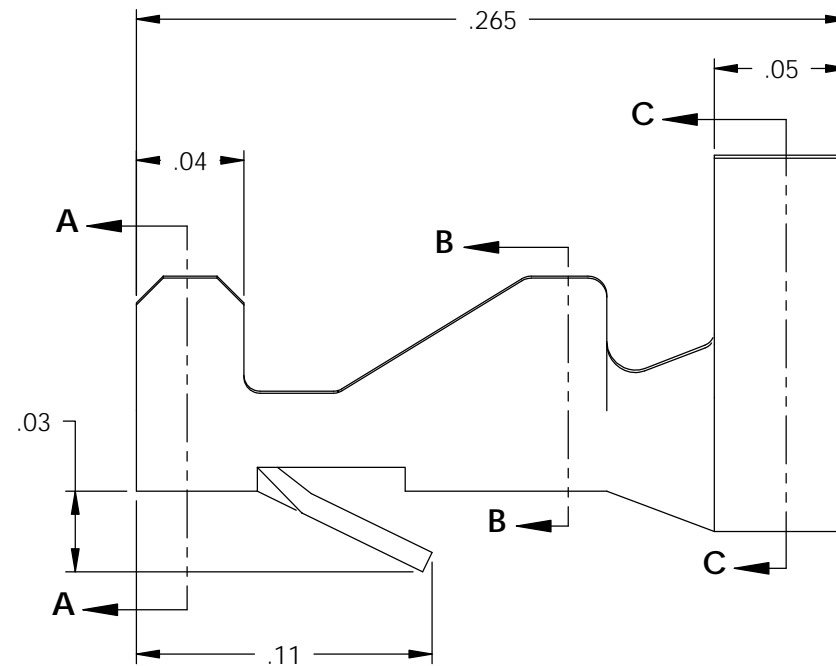
Rev.	Description of Change/ SCN#	Date
-	SCN# 140153 SCJ ORIG. ENG. DATE: 2-17-92	3-29-07
1	SCN# 140181 SCJ	6-11-07
2	SCN# 140377 JMR	6-10-08
3	ECR# 5034 SCJ	3/22/18



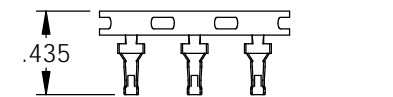
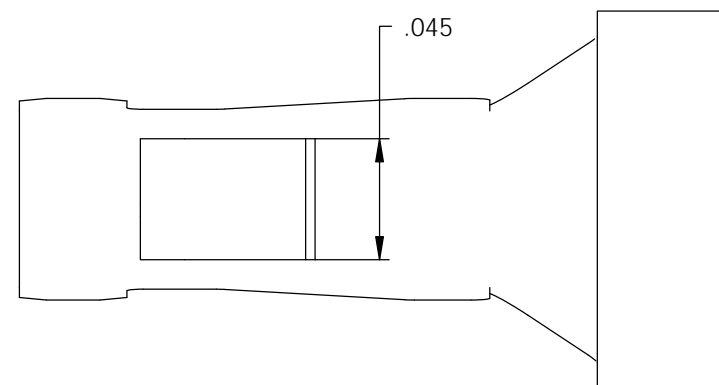
SECTION A-A
SCALE 14 : 1



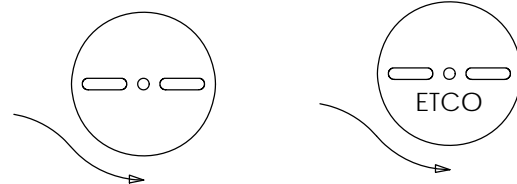
SECTION B-B
SCALE 14 : 1



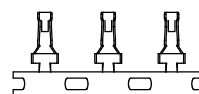
SECTION C-C
SCALE 14 : 1



DIRECTION EXITING TOOL,
EARS UP, CARRIER TO THE BACK



DIRECTION TOWARD APPLICATOR,
EARS UP, CARRIER TO THE FRONT



UNCONTROLLED COPY

 THIRD ANGLE PROJECTION TOLERANCES UNLESS OTHERWISE SPECIFIED INCHES: .XX - $\pm .030$.XXX - $\pm .015$ ANGLES: $\pm 5^\circ$	TOOL NO. 0647	Title: PRINTED CIRCUIT BOARD TERMINAL	
		DO NOT SCALE DWG. Drawn By: S.JOHNSON Date: 3-29-07	Chk'd/App'd By: Scale: 14X Size: B
		Dwg. No.: PCB001 cust	
		ETCO Incorporated Engineered Products 25 Bellows Street Warwick, RI 02888 Phone: (401) 467-2400 Fax: (401) 467-9230 www.ETCO.com	