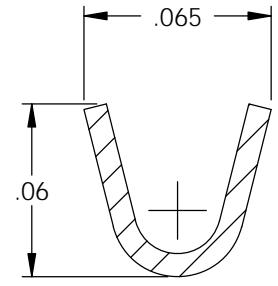
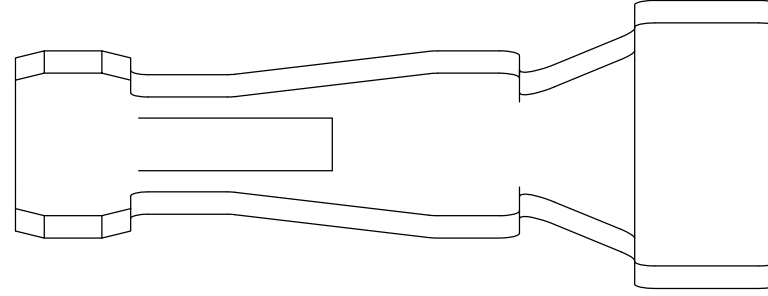


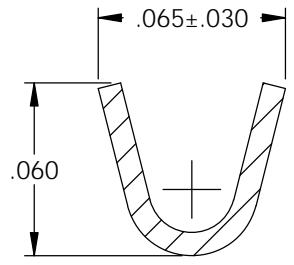
- NOTE:
- MAT'L: .008 THK., BRASS, #4 TEMPER (FULL HARD), PER ETCO METAL CODE NO. 00186.
  - POST-PLATE 100% TIN: .000150-.000275 THK. MATTE FINISH, OVER .000050 MIN. THK. NICKEL.
  - PARTS MAY BE COATED WITH A LIGHT FILM OF LUBRICATION USED IN THE MANUFACTURING PROCESS.
  - TO MATE WITH A .062 THK. PC BOARD WITH A  $\phi$ .055 THRU HOLE.
  - WIRE RANGE: 26-22 AWG.
  - INSUL RANGE:  $\phi$ .045-.060.

P/C	Part Number	Material	Plating
09625	PCB002-HB-TNAF	Note 1	Note 2

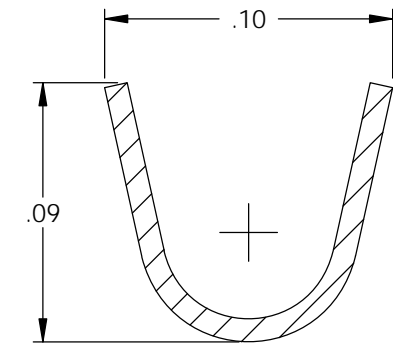
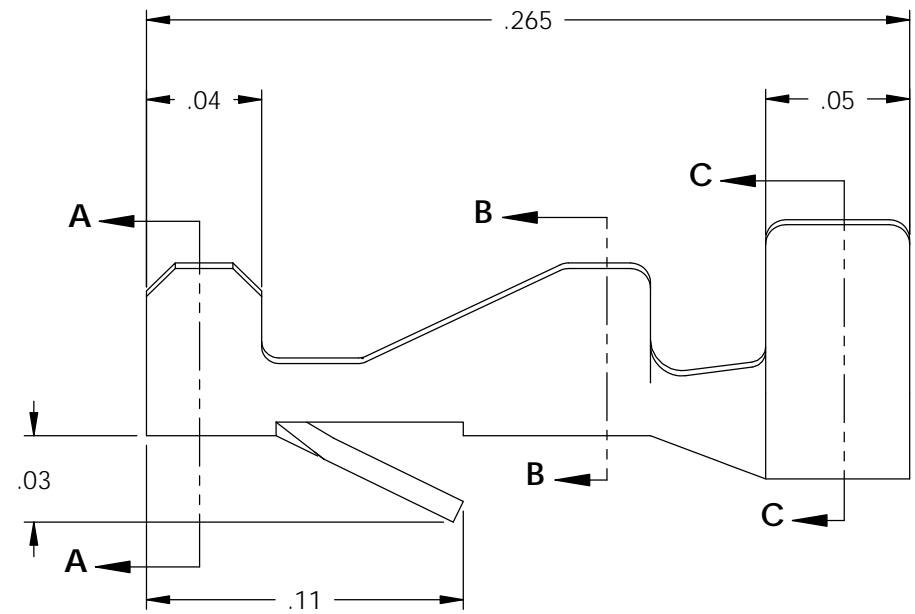
Rev.	Description of Change/ SCN#	Date
-	SCN# 140037 SCJ	8-12-06
1	SCN# 140175 SCJ	5-17-07
2	SCN# 140181 SCJ	6-11-07
3	ECR# 5034 SCJ	3/22/18



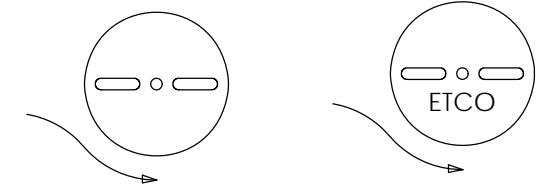
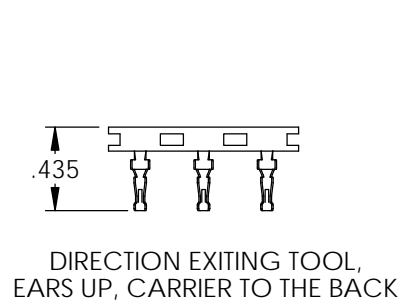
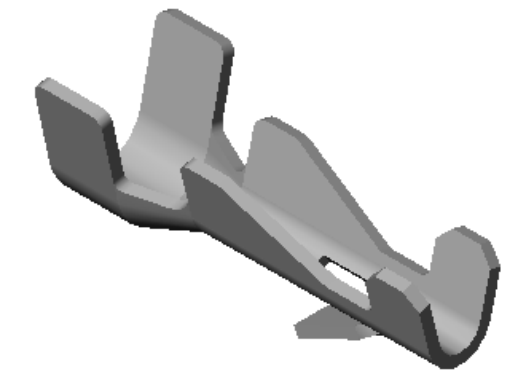
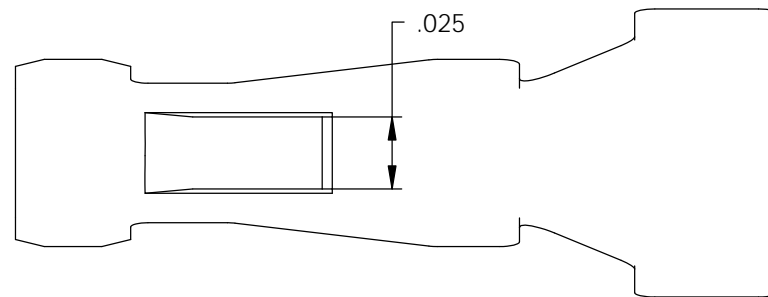
SECTION A-A  
SCALE 15 : 1



SECTION B-B  
SCALE 15 : 1



SECTION C-C  
SCALE 15 : 1



DIRECTION TOWARD APPLICATOR,  
EARS UP, CARRIER TO THE FRONT

# UNCONTROLLED COPY

<p>THIRD ANGLE PROJECTION TOLERANCES UNLESS OTHERWISE SPECIFIED INCHES: .XX - ±.030 .XXX - ±.015 ANGLES: ±5°</p>	<p>TOOL NO. <b>0216</b></p>	<p>Title: <b>PRINTED CIRCUIT BOARD TERMINAL</b></p>		
		<p>DO NOT SCALE DWG.</p>	<p>Drawn By: <b>S.JOHNSON</b></p>	<p>Date: <b>8-12-06</b></p>
<p>ETCO Incorporated Engineered Products 25 Bellows Street Warwick, RI 02888 Phone: (401) 467-2400 Fax: (401) 467-9230 www.ETCO.com</p>		<p>Chk'd/App'd By:</p>	<p>Scale: <b>15X</b></p>	<p>Size <b>B</b></p>
		<p>Dwg. No.: <b>PCB002-HB-TNAF cust</b></p>		