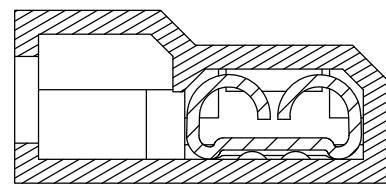
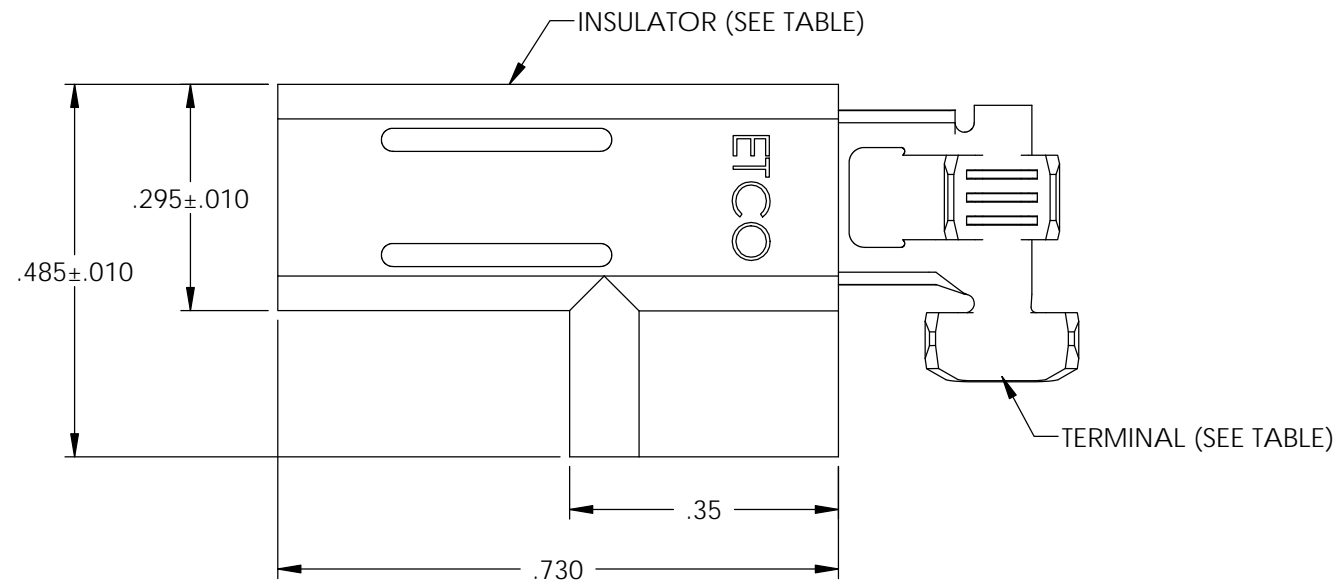
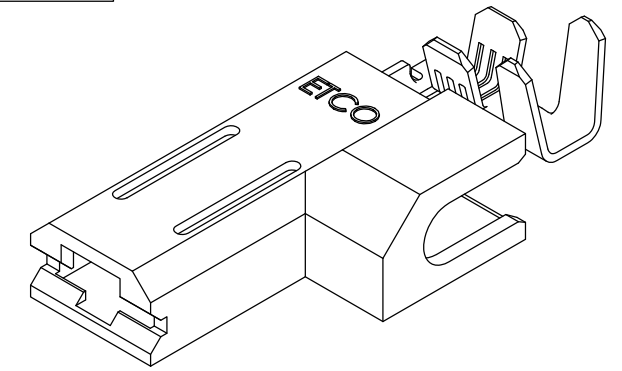


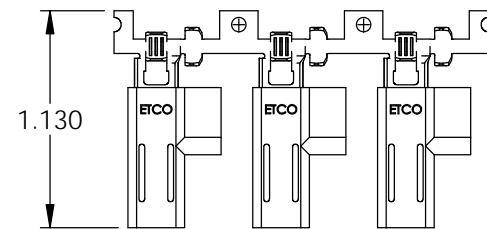
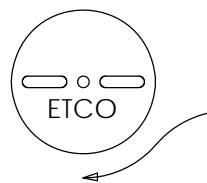
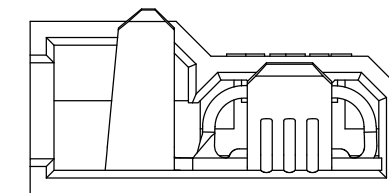
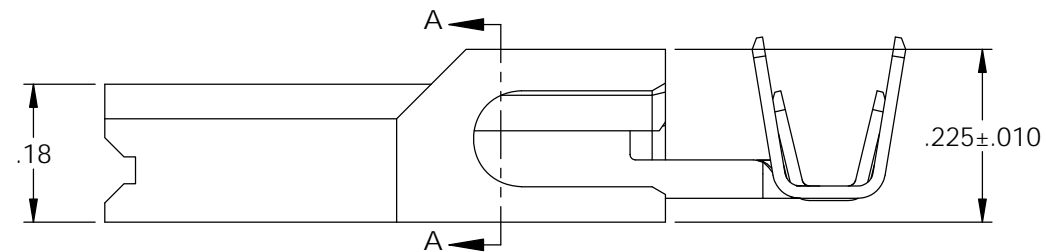
- NOTES:
 1.) ACCEPTED MALE: SEE TABLE.
 2.) WIRE RANGE: SEE TABLE.
 3.) INSUL RANGE: SEE TABLE.
 4.) INSULATOR TEMP RATING: 150 °C MAX. (11)
 5.) VOLTAGE RATING: 600 V MAX,
 1000 V MAX if used inside a fixture or sign. (11)

P/C	DESCRIPTION	TERMINAL MAT'L AND FINISH	INSULATOR MAT'L	MALE TAB	WIRE RANGE	INSUL RANGE	ETCO	CAIUS®
33000	PDF125N-FR-HB	BRASS	6/6 NYLON FR	.032 X .187	18-22 AWG	Ø .055-.105		X
33010	PDF125N-FR-THB	PRE-TINNED BRASS	6/6 NYLON FR	.032 X .187	18-22 AWG	Ø .055-.105		X
33040	PDF124N-FR-HB	BRASS	6/6 NYLON FR	.032 X .187	14-18 AWG	Ø .125-.155	X	
33050	PDF124N-FR-THB	PRE-TINNED BRASS	6/6 NYLON FR	.032 X .187	14-18 AWG	Ø .125-.155	X	
33060	PDF126N-FR-HB	BRASS	6/6 NYLON FR	.020 X .187	14-18 AWG	Ø .125-.155	X	
33070	PDF126N-FR-THB	PRE-TINNED BRASS	6/6 NYLON FR	.020 X .187	14-18 AWG	Ø .125-.155	X	
33080	PDF127N-FR-HB	BRASS	6/6 NYLON FR	.020 X .187	18-22 AWG	Ø .055-.105		X
33090	PDF127N-FR-THB	PRE-TINNED BRASS	6/6 NYLON FR	.020 X .187	18-22 AWG	Ø .055-.105		X
36017	PDF125N-FR-THB-WPL	PRE-TINNED BRASS	6/6 NYLON FR	.020 X .187	18-22 AWG	Ø .055-.105		X

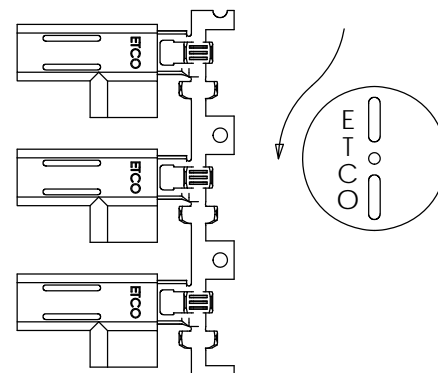
Rev.	Description of Change/ SCN#	Date
8	REMODELED ON SOLIDWORKS NO CHANGES SCJ	1-26-07
9	COMPLETED P/C LIST SCJ	9-15-08
10	SCN-140446 JMR REMOVED XI PRODUCT	12-09-08
11	ECR# 1939 SCJ	1/21/13
11	ECR# 3817 SCJ	7/16/15
11	ECR# 3799 SCJ	7/20/15



SECTION A-A



DIRECTION EXITING TOOL,
 RIGHT TO LEFT,
 EARS UP, TO THE BACK



DIRECTION TOWARD APPLICATOR,
 BACK TO FRONT,
 EARS UP, TO THE RIGHT

UNCONTROLLED COPY

 THIRD ANGLE PROJECTION TOLERANCES UNLESS OTHERWISE SPECIFIED INCHES: .XX - ±.030 .XXX - ±.015 ANGLES: ±5°	TOOL NO. 0795	Title: .187 FEMALE FLAG DISCONNECT ASSEMBLY	
		DO NOT SCALE DWG. Drawn By: S.JOHNSON Date: 1-24-07	Chk'd/App'd By: Scale: 4X Size: B
		Dwg. No.: PDF124N, PDF125N, PDF126N, PDF127N cust	