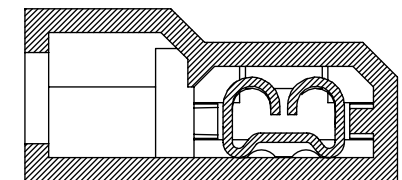
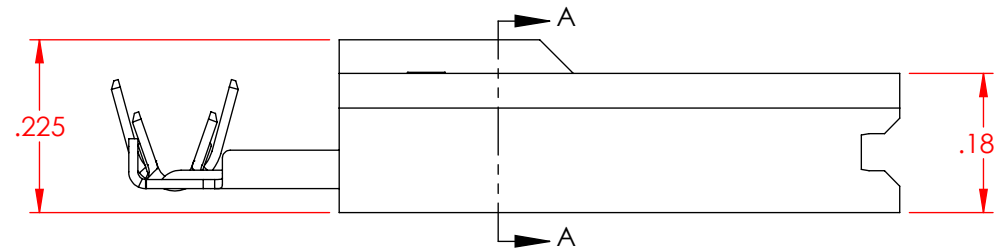
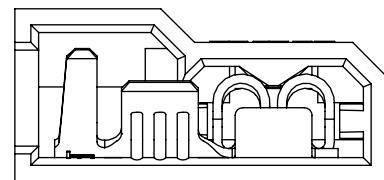
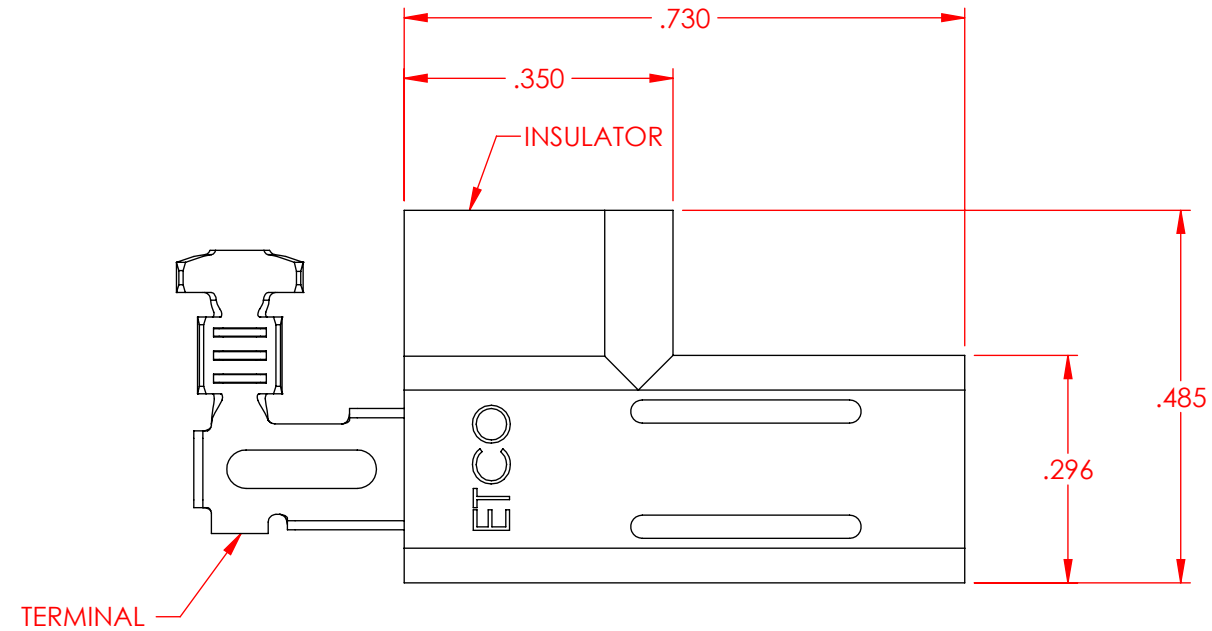
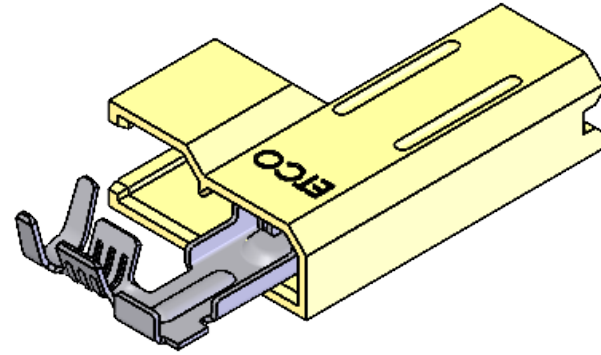


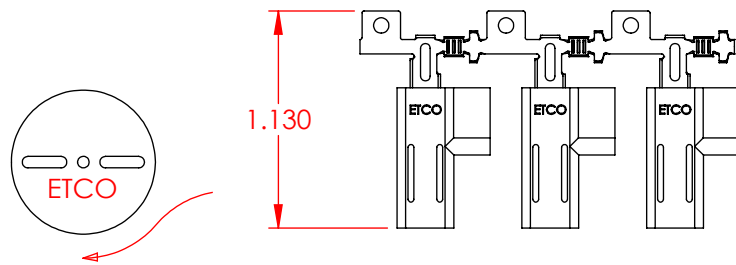
- NOTES:
 1.) MAT'L THICKNESS: .012 THK.
 2.) WIRE RANGE: 20-22 AWG. (E)
 3.) INSUL RANGE: ϕ .060-.100.
 4.) INSULATOR MAT'L 6/6 NYLON FR.
 5.) INSULATOR TEMP RATING: 150°C MAX.
 6.) INSULATOR FLAMIBILITY RATING: UL94 V-0
 7.) VOLTAGE RATING: 600 V MAX,
 1000 V MAX if used inside a fixture or sign.

P/C	DESCRIPTION	ACCEPTED MALE	TERMINAL P/C	TERMINAL MAT'L AND FINISH	INSULATOR P/C
33100	PDF61-FR-HB	.032 X .110	08041	BRASS	81139
33101	PDF61-FR-THB	.032 X .110	08042	PRE-TINNED BRASS	81139
33104	PDF65-FR-HB	.020 X .110	08045	BRASS	81139
33105	PDF65-FR-THB	.020 X .110	08046	PRE-TINNED BRASS	81139

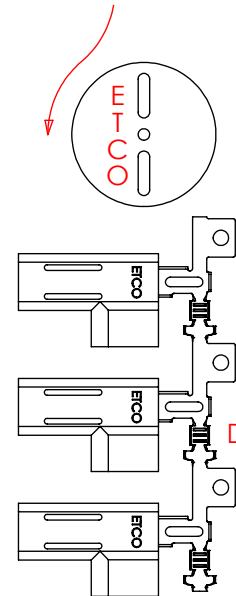
Rev.	Description of Change/ SCN#	Date
F	Added Insulator dims SCJ	1/11/23



SECTION A-A



DIRECTION EXITING TOOL,
 RIGHT TO LEFT,
 EARS UP, TO THE BACK



DIRECTION TOWARD APPLICATOR,
 BACK TO FRONT,
 EARS UP, TO THE RIGHT

UNCONTROLLED COPY

<p>THIRD ANGLE PROJECTION TOLERANCES UNLESS OTHERWISE SPECIFIED INCHES: .XX - \pm.030 .XXX - \pm.015 ANGLES: \pm5°</p>	<p>TOOL NO. 1060</p>	<p>Title: .110 FEMALE FLAG DISCONNECT ASSEMBLY</p>	
		<p>DO NOT SCALE DWG.</p>	<p>Drawn By: S.JOHNSON</p>
<p>ETCO Incorporated Engineered Products 25 Bellows Street Warwick, RI 02888 Phone: (401) 467-2400 Fax: (401) 467-9230 www.ETCO.com</p>		<p>Design Control By: ETCO</p>	<p>Scale: 4X Size B</p>
<p>Dwg. No.: PDF61 and PDF65 cust</p>			