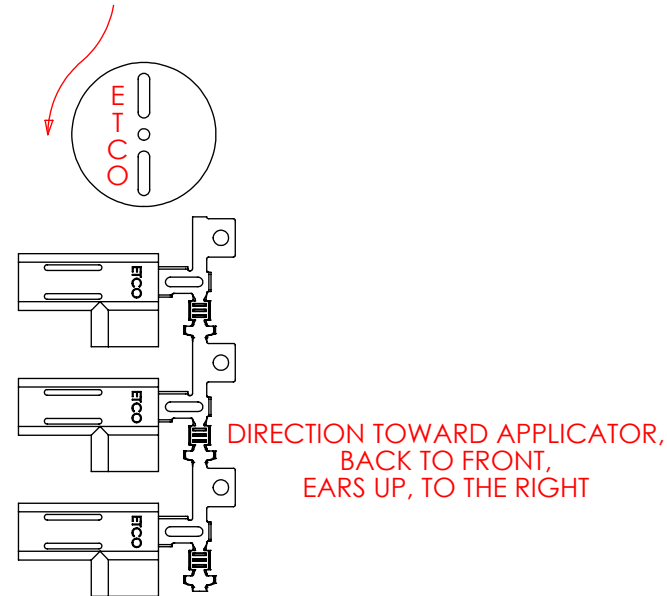
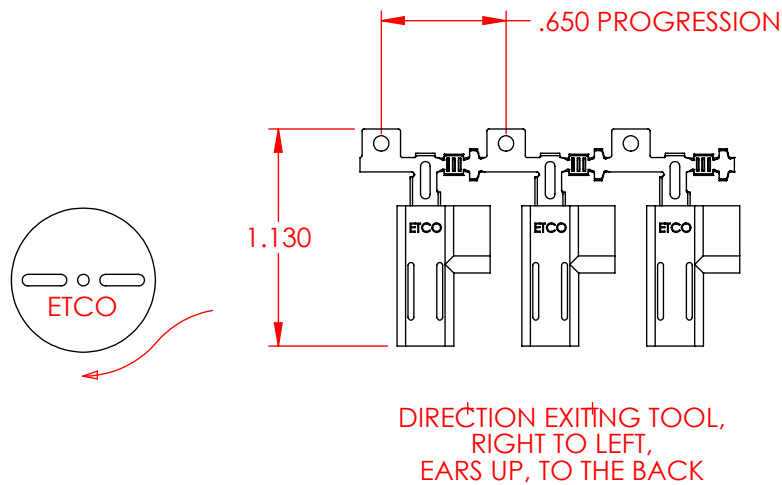
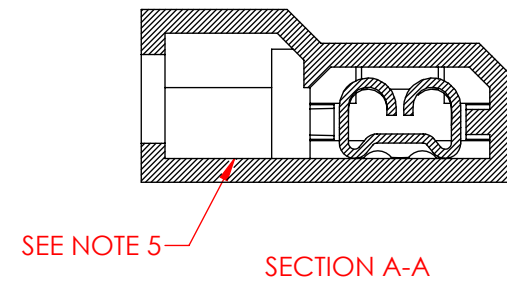
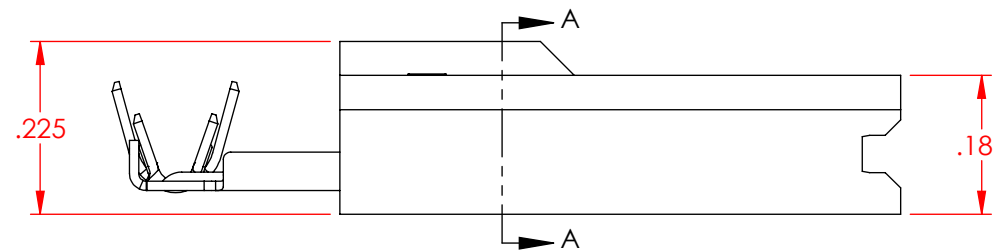
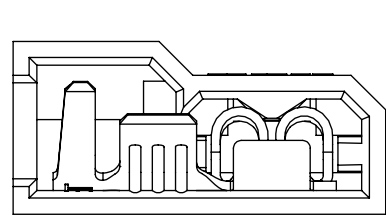
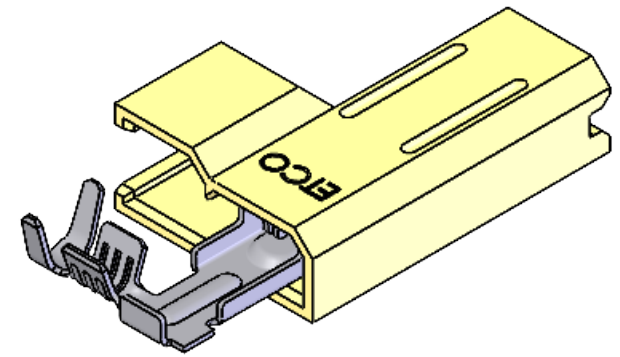
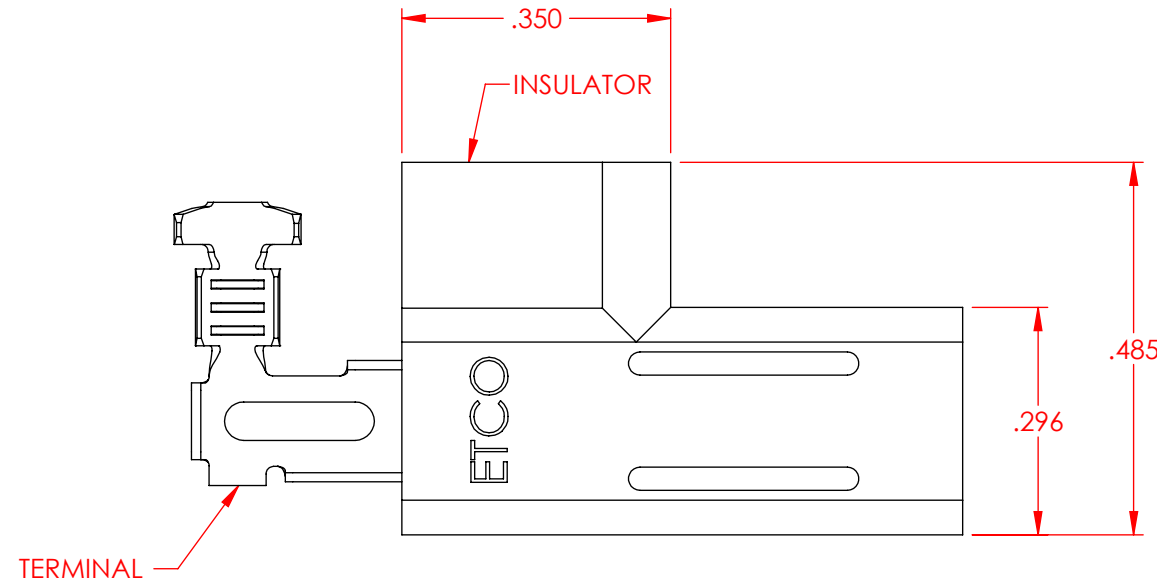


- NOTES:
 1.) MAT'L THICKNESS: .012 THK.
 2.) WIRE RANGE: 18-20 AWG.
 3.) INSUL RANGE: Ø.060-.100.
 4.) INSULATOR MAT'L 6/6 NYLON FR.
 5.) INSULATOR TEMP RATING: 150°C MAX.
 6.) INSULATOR FLAMIBILITY RATING: UL94 V-0
 7.) VOLTAGE RATING: 600 V MAX,
 1000 V MAX if used inside a fixture or sign.

P/C	DECRPTION	ACCEPTED MALE	TERMINAL P/C	TERMINAL MAT'L AND FINISH	INSULATOR P/C
33102	PDF63-FR-HB	.032 X .110	08043	BRASS	81139
33103	PDF63-FR-THB	.032 X .110	08044	PRE-TINNED BRASS	81139
33106	PDF67-FR-HB	.020 X .110	08047	BRASS	81139
33107	PDF67-FR-THB	.020 X .110	08048	PRE-TINNED BRASS	81139

Rev.	Description of Change/ SCN#	Date
B	Added Insulator dims SCJ	1/11/23



UNCONTROLLED COPY

<p>THIRD ANGLE PROJECTION TOLERANCES UNLESS OTHERWISE SPECIFIED INCHES: .XX - ±.030 .XXX - ±.015 ANGLES: ±5°</p>	<p>TOOL NO. 1060</p>	<p>Title: .110 FEMALE FLAG DISCONNECT ASSEMBLY</p>	
		<p>DO NOT SCALE DWG.</p>	<p>Drawn By: S.JOHNSON</p>
<p>ETCO Incorporated Engineered Products 25 Bellows Street Warwick, RI 02888 Phone: (401) 467-2400 Fax: (401) 467-9230 www.ETCO.com</p>		<p>Design Control By: ETCO</p>	<p>Scale: 4X Size: B</p>
<p>Dwg. No.: PDF63 and PDF67 cust</p>			