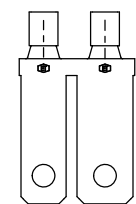
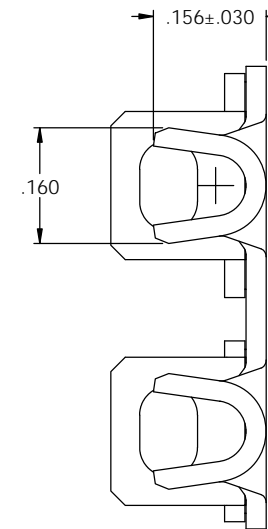
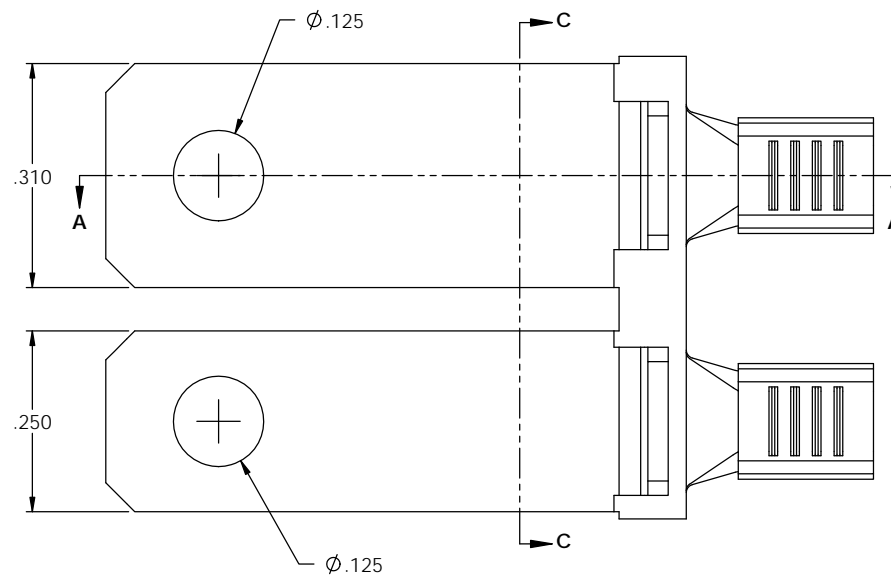
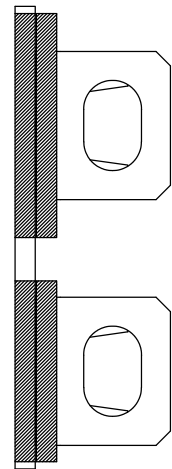
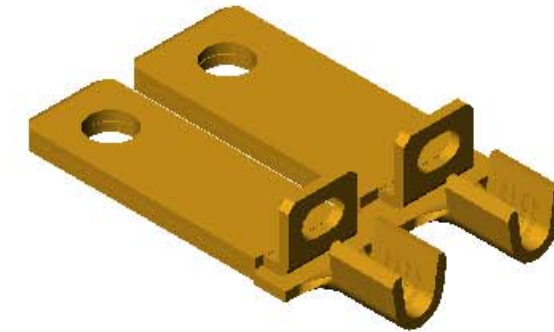
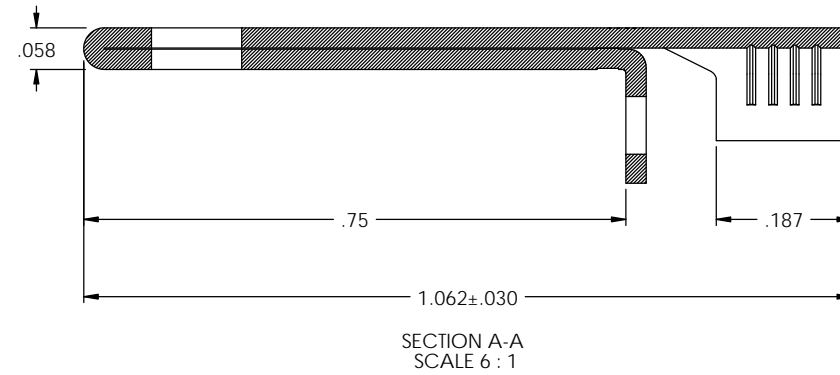


NOTES:

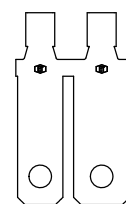
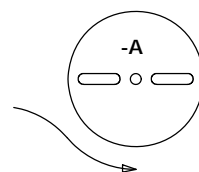
1. MATERIAL: .028 THICK C26000 BRASS; 1/2 HARD
ANNEALED TO TEMPER; PER ETCO METAL CODE 00097.
2. WIRE RANGE: #14-#18 AWG.
3. FOR REWIND INSTRUCTIONS SEE WI-09-10-8.

P/C	DESCRIPTION ③	MAT'L	REWIND	AL	SP
14129	PFWFF-A-HB	NOTE 1	NO	X	X
14151	PFWFF-DRC-HB	NOTE 1	YES	X	X

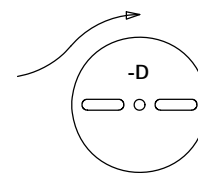
Rev.	Description of Change/SCN#	Date
1	TRANSFER FROM CP TO EP	10-29-04
2	SCN# 102918 SCJ	4-4-05
3	ECR# 816 SCJ	11-2-11



DIRECTION EXITING TOOL
EARS DOWN, TO THE BACK
SEE NOTE 3



DIRECTION EXITING TOOL
EARS DOWN, TO THE BACK
SEE NOTE 3



THIS PRINT IS THE PROPERTY OF ETCO INCORPORATED. NO PART OF THIS DESIGN MAY BE USED IN ANY WAY WITHOUT WRITTEN CONSENT FROM ETCO INCORPORATED.

UNCONTROLLED COPY			
 THIRD ANGLE PROJECTION TOLERANCES UNLESS OTHERWISE SPECIFIED INCHES: .XX - ±.030 .XXX - ±.015 ANGLES - ±5°	TOOL NO. 0856	Title: POLARIZED BLADE	
	DO NOT SCALE DWG.	Drawn By: S.JOHNSON	Date: 10-29-04
 ETCO	ETCO Incorporated Engineered Products 25 Bellows Street Warwick, R.I. 02888 Phone: (401)467-2400 FAX: (401)467-9230 www.ETCO.com	Chk'd/App'd By:	Scale: 4X Size: C
		Dwg. No.:	PFWFF