

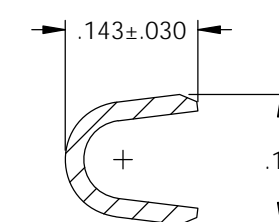
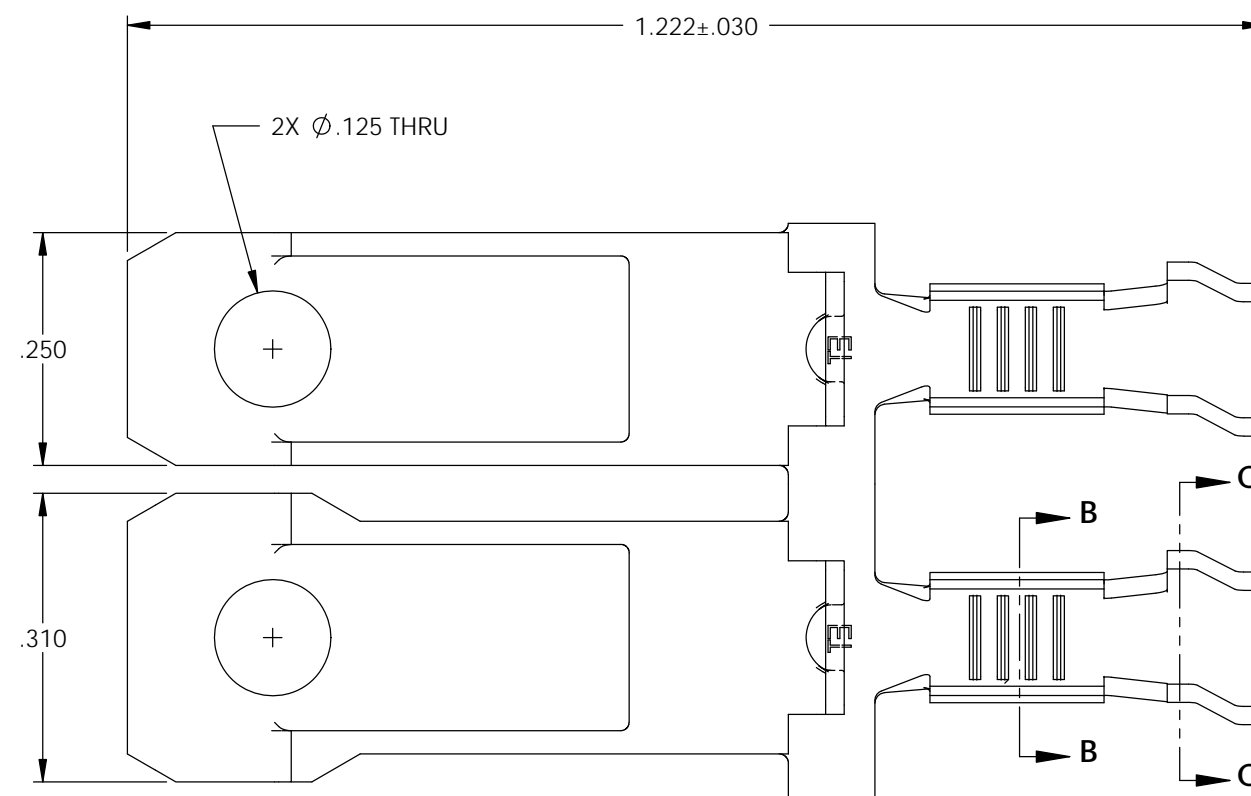


NOTE:

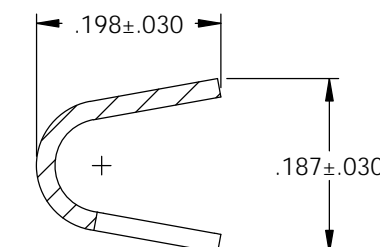
- 1.) MAT'L: .020 BRASS,
#2 TEMPER (HALF HARD), ANNEALED TO TEMPER,
PER ETCO METAL CODE NO. 00095.
- 2.) MAT'L: .020 PRE-TINNED BRASS,
#2 TEMPER (HALF HARD), ANNEALED TO TEMPER,
PER ETCO METAL CODE NO. 01588.
- 3.) PARTS MAY BE COATED WITH A LIGHT FILM
OF LUBRICATION USED IN THE MANUFACTURING
PROCESS.
- 4.) FOR REWINDS SEE WI-09-10-08.
- 5.) WIRE RANGE: 14-18 AWG.
- 6.) INSULATION RANGE: ϕ .120 - ϕ .175 (3)

P/C	DESCRIPTION (4)	MAT'L	REWIND		
09846	PJ817F2-ARB-THB	NOTE 2	YES	X	X
14066	PJ817F2-ARC-HB	NOTE 1	YES	X	X

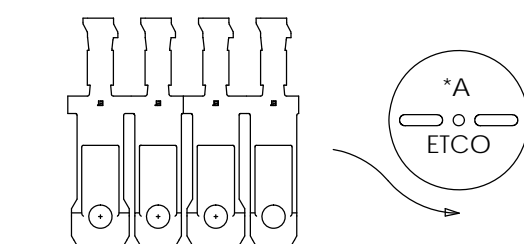
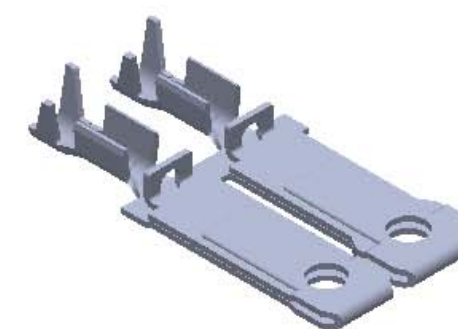
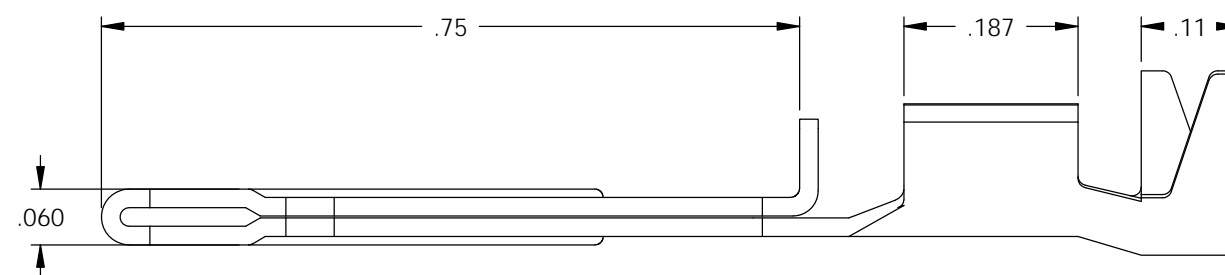
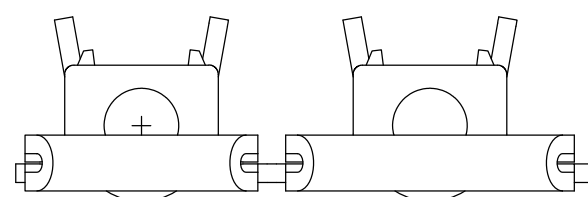
Rev.	Description of Change/ SCN#	Date
1	TRANSFERED FROM CP SCJ	10-26-04
2	SCN# 102918 SCJ	4-11-05
3	SCN# 140383 JMR	6-10-08
4	ECR# 816 SCJ	11-2-11



SECTION B-B
SCALE 5:1



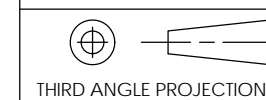
SECTION C-C
SCALE 5:1



DIRECTION EXITING TOOL,
EARS DOWN, TO THE BACK
SEE NOTE 4

THIS PRINT IS THE PROPERTY OF ETCO INCORPORATED. NO PART OF THIS DESIGN MAY BE USED IN ANY WAY WITHOUT WRITTEN CONSENT FROM ETCO INCORPORATED.

UNCONTROLLED COPY



TOOL NO.
0858

Title: **PADDED SPACE BLADE**

TOLERANCES UNLESS
OTHERWISE SPECIFIED
INCHES: .XX - ±.030
.XXX - ±.015

ANGLES - ±5°



ETCO Incorporated
Engineered Products
25 Bellows Street
Warwick, R.I. 02888
Phone: (401)467-2400
FAX: (401)467-9230
www.ETCO.com

DO NOT SCALE DWG.

Drawn By: **S.JOHNSON**

Date: **8-6-03**

Chk'd/App'd By:

Scale:
5:1

Size
B

Dwg. No.:

PJ817F2